

GÜÇBİR
GENERATOR

www.gucbirgenerator.com



COMPANY PROFILE

In 1980s, Gucbir Generator started with the principle of providing world-class services to its customers by using the philosophy of best and highest quality production sales and services, which has managed to become one of the largest generator company all around the globe and Türkiye in last 40 years.

With the introduction of fabrication production in 2006, it has met the needs of thousands of institutions and organizations. Gucbir Generator, which continues to provide 24/7 support operations with the team of more than 300 highly qualified engineers and manages its own infrastructure, investments and R&D policies by producing the most advanced machine tracks among all generator companies in Türkiye.

Gucbir having a professional team and latest equipments in its factory 45.000 m² of production and storage space in Kdz.Eregli and in the field of 5.000 m² for service and storage in Sultanbeyli/Istanbul, increasing its capacity in direct proportion to the developments in the sector and following a developing line it is one of the leading companies in the sector with its direct and indirect exports to more than 90 countries.



45000 m² ASSEMBLY AREA

4500 GENERATORS
PRODUCED IN 2022



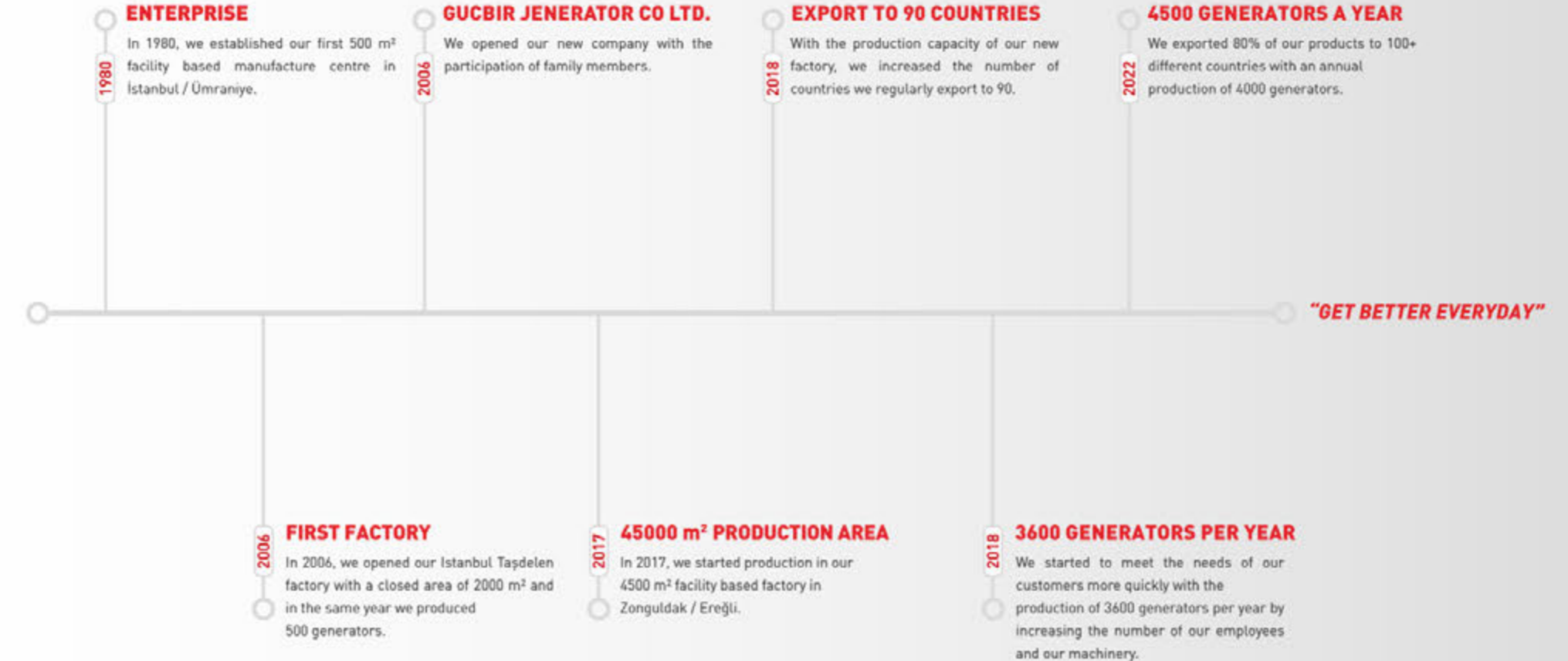
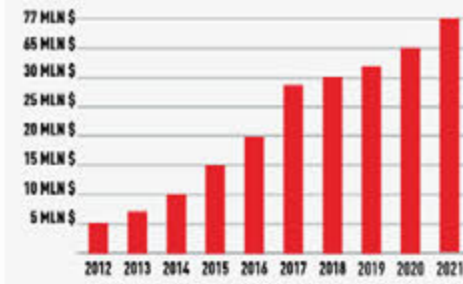
45000 m² SQM
ASSEMBLY AREA



IN 2022
4500 GENERATOR PRODUCTION

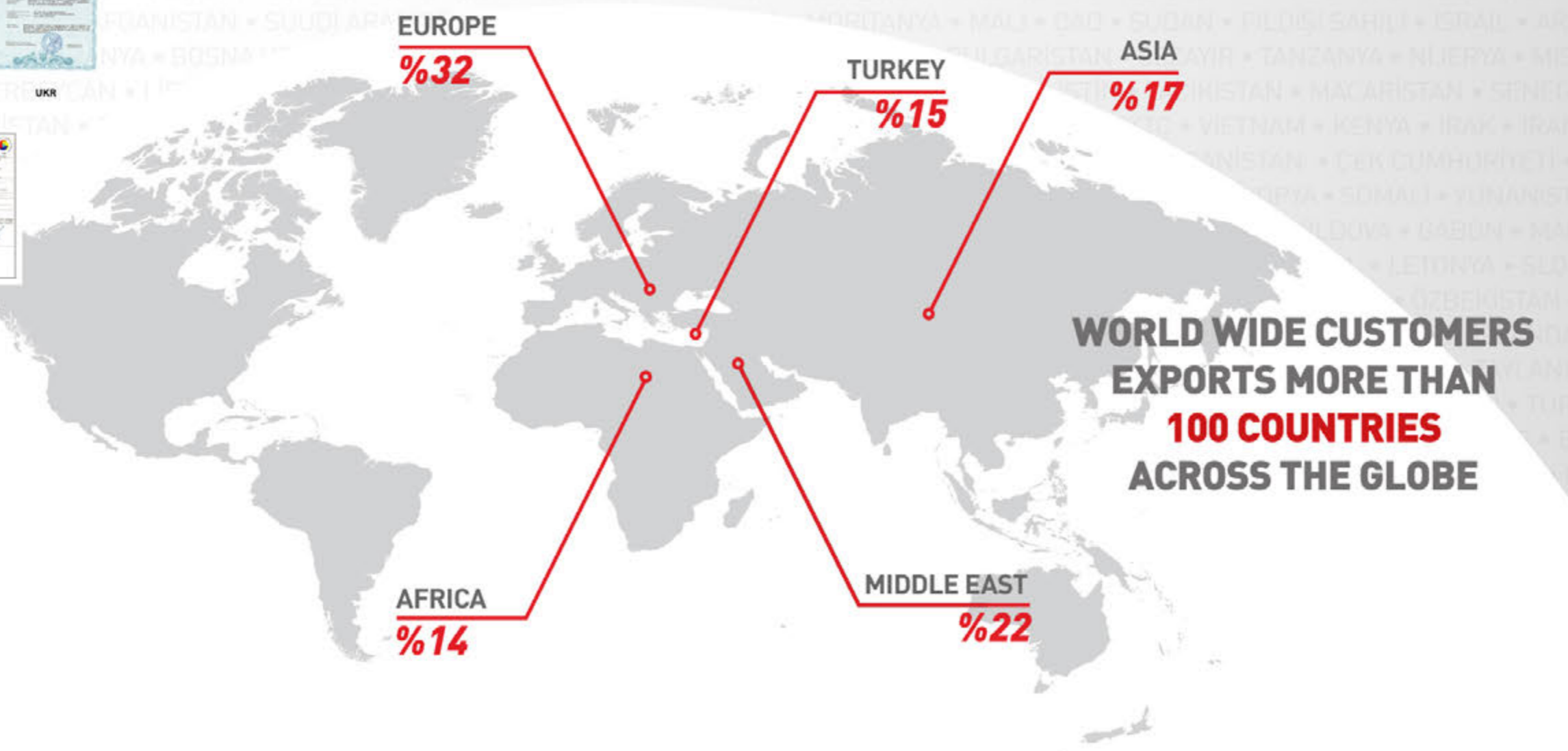


300+ EMPLOYEES



GÜÇBİR

OUR CERTIFICATES



**WORLD WIDE CUSTOMERS
EXPORTS MORE THAN
100 COUNTRIES
ACROSS THE GLOBE**

DIESEL GENERATOR SETS



10 kVA 2750 kVA



GJP SERIES

10 kVA - 2500 kVA

MODEL	400V / 230V		ENGINE	ALTERNATOR			DIMENSIONS (mm)		WEIGHT (kg)	
	STAND BY (kVA)	PRIME (kVA)		MARANELLO	LEROY SOMER	STAMFORD	OPEN SET	CANOPIED	OPEN SET	CANOPIED
GJP10	10	9	403A-11G1	M12	TAL-040-C	S0L1-H1	1550x820x1080	1900x920x1340	480	590
GJP15	15	13	403A-15G1	M15	TAL-040-D	S0L1-P1	1550x820x1080	1900x920x1340	490	600
GJP22	22	20	404A-22G1	M25	TAL-040-F	S0L2-G1	1550x820x1080	1900x920x1340	650	730
GJP33	33	30	1103A-33G	M33	TAL-042-C	S0L2-P1	1770x850x1440	2225x950x1660	710	1010
GJP50	50	45	1103A-33TG1	M50	TAL-042-F	SIL2-N1	1770x850x1440	2225x950x1660	850	1220
GJP66	66	60	1103A-33TG2	M66	TAL-042-H	SIL2-Y1	1900x900x1610	2440x1000x1860	890	1370
GJP72	72	65	1104A-44TG1	M75	TAL-044-C	UCI 224F	1900x900x1610	2440x1000x1860	950	1440
GJP88	88	80	1104A-44TG2	M88	TAL-044-C	UCI 224G	2200x1100x1740	2750x1100x1860	1000	1410
GJP110	110	100	1104C-44TAG2	M110	TAL-044-D	UCI 274C	2200x1100x1740	2750x1100x1860	1360	1560
GJP150	150	135	1106A-70TG1	M150	TAL-044-H	UCI 274E	2460x1100x1740	2980x1100x2000	1500	1860
GJP165	165	150	1106A-70TAG2	M165	TAL-044-J	UCI 274F	2460x1100x1840	3200x1100x2100	1650	2010
GJP200	200	180	1106A-70TAG3	M200	TAL-046-A	UCI 274G	2600x1100x1940	3500x1100x2240	1900	2146
GJP220	220	200	1106A-70TAG4	M220	TAL-046-B	UCI 274H	2600x1100x1940	3500x1100x2240	1900	2100
GJP250	250	230	1206A-E70TTAG2	M250	TAL-046-C	UCDI274J	1600x1250x1980	3500x1250x2280	2100	2250
GJP275	275	250	1206A-E70TTAG3	M275	TAL-046-D	UCDI274K	1600x1250x1980	3500x1250x2280	2200	2534
GJP300	300	275	1506A-E88TAG4	M330	TAL-046-E	HCI 444D	2980x1250x2100	3950x1250x2450	2900	2800
GJP330	330	300	1506A-E88TAG5	M330	TAL-046-F	HCI 444D	2980x1250x2100	3950x1250x2450	3000	2880
GJP400	400	350	2206A-E13TAG2	M400	TAL-046-H	S4L1D-E4	3300x1600x2400	4640x1600x2750	3400	4500
GJP450	450	400	2206A-E13TAG3	M450	TAL-047-A	S4L1D-F4	3300x1600x2400	4640x1600x2750	3530	4800
GJP500	500	455	2506A-E15TAG1	M500	TAL-047-B	S4L1D-G4	3600x1600x2400	4640x1600x2750	3890	4900
GJP550	550	500	2506A-E15TAG2	M550	TAL-047-C	S5L1D-C4	3600x1600x2400	4640x1600x2750	4070	4992
GJP660	660	600	2806A-E18TAG1A	M660	TAL-047-E	S5L1D-E4	3600x2100x2440	5000x2100x3150	4190	6050
GJP700	700	650	2806A-E18TAG2	M700	TAL-047-F	HCI 544FS	3600x2100x2440	5000x2100x3150	5100	6200
GJP785	785	715	2806A-E18TAG4	M825	TAL-049-B	S4L1S-G4	3600x2100x2440	5450x2100x3330	5610	6400
GJP825	825	750	2806A-E18TAG5	M825	TAL-049-C	S4L1S-H4	4600x2100x2570	5450x2100x3330	6700	8560
GJP900	900	800	4006-23TAG3A	M950	TAL-049-C	S6L1D-C4	4600x2100x2570	5450x2100x3330	7300	9020
GJP1000	1000	900	4008TAG1A	M1000	TAL-049-D	S6L1D-D4	5500x2250x2720	5800x2250x3480	9300	11040
GJP1100	1100	1000	4008TAG2A	M1100	TAL-049-E	S6L1D-E4	5000x2250x2720	5800x2250x3480	9325	11065
GJP1250	1250	1125	4008-30TAG3	M1250	LSA 50.2 M6	S6L1D-F4	5000x2250x2720	5800x2250x3420	9610	11360
GJP1385	1385	1250	4012-46TWG2A	M1350	LSA 50.2 M6	S6L1D-G4	5000x2250x2720	5800x2250x3420	9720	12500
GJP1500	1500	1350	4012-46TWG3A	M1500	LSA 50.2 L8	S6L1D-H4	5000x2250x2720	7200x2310x3380	9800	12850
GJP1650	1650	1500	4012-46TAG2A	M1670	LSA 50.2 L8	S7L1D-C41	5000x2250x2721	7200x2310x3380	9920	13450
GJP1875	1875	1710	4012-46TAG3A	M2000	LSA 50.2 VL10	S7L1D-E41	6500X2350X2700	12000X2350X3150	10700	19300
GJP2000	2000	1850	4016-61TRG1	M2000	LSA52.3 S5	S7L1D-F41	6500X2350X2700	12000X2350X3300	13500	20400
GJP2250	2250	2000	4016-61TRG2	M2260	LSA52.3 S6	S7L1D-G41	6500X2350X2700	12000X2350X3300	13600	20600
GJP2500	2500	2250	4016-61TRG3	M2500	LSA52.3 L9	S7L1D-H41	6500X2350X2700	12000X2350X3300	13900	20900

Gucbir Generator reserves the right to make changes in technical specifications and cabin dimensions without prior notice.

GJC SERIES

27,5 kVA - 2200 kVA



MODEL	400V / 230V		ENGINE	ALTERNATOR		DIMENSIONS (mm)		WEIGHT (kg)	
	STAND BY (kVA)	PRIME (kVA)		MARANELLO	LEROY SOMER	OPEN SET	CANOPIED	OPEN SET	CANOPIED
GJC27	27,5	25	X2.5G2	M30	TAL-042-A	1770x850x1440	2225x950x1660	710	1010
GJC40	38,5	35	X3.3G1	M400	TAL-042-D	1770x850x1440	2225x950x1660	850	1220
GJC110	110	100	6BTA5.9G5	M110	TAL-044-D	2460x1100x1740	3200x1100x2100	1500	1860
GJC150	150	136	6BTA5.9G6	M150	TAL-044-H	2460x1100x1740	3200x1100x2100	1600	2010
GJC170	170	155	6BTA5.9G7	M180	TAL-044-J	2460x1100x1740	3200x1100x2100	1650	2050
GJC220	220	200	QSB7G5	M220	TAL-044-M	2600x1100x1940	3500x1100x2240	1900	2100
GJC300	300	270	6LTAA9.5G3	M330	TAL-046-E	2980x1250x2100	3950x1250x2450	2900	2800
GJC330	330	300	QSL9G5	M330	TAL-046-F	2980x1250x2100	3950x1250x2450	3000	2280
GJC350	350	320	6LTAA9.5G1	M350	TAL-046-H	3300x1600x2400	4640x1600x2750	3400	4500
GJC450	450	410	QSG12G2	M450	TAL-047-A	3300x1600x2400	4640x1600x2750	3530	4800
GJC550	550	500	QSX15G8	M550	TAL-047-C	3600x1600x2400	4640x1600x2750	4070	4992
GJC700	700	630	VTA28G5	M700	TAL-047-F	3600x2100x2440	5000x2100x3150	5100	6200
GJC770	770	700	VTA28G6	M825	TAL-049-B	3600x2100x2440	5450x2100x3330	6610	6400
GJC880	880	800	QSK23G3	M900	TAL-049-C	4600x2100x2570	5450x2100x3330	7300	9020
GJC1100	1100	1000	QST30G4	M1100	TAL-049-E	5500x2250x2720	5800x2250x3480	9300	11040
GJC1100	1100	1000	KTA38G5	M1100	TAL-049-E	5000x2250x2720	5800x2250x3420	9720	12000
GJC1100	1100	1000	KTA38G14	M1100	TAL-049-E	5000x2250x2720	7200x2310x3380	9800	12850
GJC1375	1375	1250	KTA50G3	M1350	LSA50.2M6	5000x2250x2720	7200x2310x3380	9800	12850
GJC1500	1500	1400	KTA50G8	M1500	LSA50.2LB	5000x2250x2720	7200x2310x3380	9800	13000
GJC2200	2200	2000	QSK60G4	M2260	LSA52.3S6	6500x2350x2700	12000x2350x3300	15200	20600

GÜÇBİR

GJI SERIES

33 kVA - 660 kVA



GJR SERIES

20 kVA - 400 kVA



MODEL	400V / 230V		ENGINE	ALTERNATOR		DIMENSIONS (mm)		WEIGHT (kg)	
	STAND BY (kVA)	PRIME (kVA)		MARANELLO	LEROY SOMER	OPEN SET	CANOPIED	OPEN SET	CANOPIED
GJI33	33	30	80313AM1P	M33	TAL042-C	1770x850x1440	2225x950x1660	800	1010
GJI50	50	45	NEF45AM1A	M50	TAL042-G	1770x850x1440	2225x950x1660	920	1220
GJI55	55	50	NEF45AM2	M55	TAL042-G	1900x900x1610	2440x1000x1860	950	1300
GJI66	66	60	NEF45SM1A	M66	TAL042-H	1900x900x1610	2440x1000x1860	970	1370
GJI82	82	74	NEF45SM3	M83	TAL044-B	2200x1000x1610	2750x1100x1860	990	1360
GJI88	88	80	NEF45SM2A	M88	TAL044-B	2200x1000x1610	2750x1100x1860	1070	1410
GJI94	94	85	NEF45TM1A	M94	TAL044-C	2300x1100x1740	2980x1100x2000	1000	1430
GJI110	110	100	NEF45TM2A	M110	TAL044-D	2300x1100x1740	2980x1100x2000	1120	1466
GJI132	132	120	NEF45TM3	M135	TAL044-E	2460x1100x1840	3200x1100x2100	1200	1680
GJI135	135	125	NEF67SM1	M135	TAL044-E	2460x1100x1840	3200x1100x2100	1230	1700
GJI150	150	135	NEF67TM2A	M150	TAL044-H	2460x1100x1840	3200x1100x2100	1470	1800
GJI185	185	165	NEF67TM3A	M200	TAL044-K	2460x1100x1840	3200x1100x2100	1500	1900
GJI200	200	180	NEF67TM4	M200	TAL044-L	2600x1100x1940	3500x1100x2240	1530	2000
GJI220	220	200	NEF67TM7	M220	TAL044-M	2600x1100x1940	3500x1100x2240	1610	2050
GJI275	275	250	NEF67TE8W	M275	TAL046-D	2600x1250x1980	3500x1250x2280	1800	2350
GJI330	330	300	CURSOR87TE4	M350	TAL046-F	2980x1250x2100	3950x1250x2450	2250	3060
GJI385	385	350	CURSOR13TE2A	M400	TAL046-H	3300x1250x2400	4640x1600x2750	3240	4000
GJI440	440	400	CURSOR13TE3A	M450	TAL0473-A	3300x1250x2400	4640x1600x2750	3430	4150
GJI500	500	450	CURSOR13TE6W	M500	TAL0473-B	3300x1250x2400	4640x1600x2750	3650	4555
GJI550	550	500	CURSOR13TE7W	M550	TAL0473-C	3300x1250x2400	4640x1600x2750	3770	4610
GJI660	660	600	CURSOR16TE1W	M660	TAL0473-E	3600x2100x2440	5000x2100x3050	3980	5000

GJB SERIES

20 kVA - 2750 kVA



MODEL	400V / 230V		ENGINE	ALTERNATOR		DIMENSIONS (mm)		WEIGHT (kg)	
	STAND BY (kVA)	PRIME (kVA)		MARANELLO	LEROY SOMER	OPEN SET	CANOPIED	OPEN SET	CANOPIED
GJB20	20	18	4M06G20/5	M20	TAL040-F	1550x820x1080	1900x920x1340	650	730
GJB25	25	23	4M06G25/5	M25	TAL042-A	1550x820x1080	1900x920x1340	710	1010
GJB35	35	32	4M06G35/5	M40	TAL042-C	1770x850x1440	2225x950x1660	850	1220
GJB44	44	40	4M06G44/5	M45	TAL042-E	1770x850x1440	2225x950x1660	890	1370
GJB50	50	45	4M06G50/5	M50	TAL042-F	1770x850x1440	2225x950x1660	950	1440
GJB55	55	50	4M06G55/5	M55	TAL042-G	1900x900x1610	2440x1000x1860	1000	1410
GJB72	72	65	4M10G70/5	M83	TAL044-A	1900x900x1610	2440x1000x1860	1360	1560
GJB88	88	80	4M10G88/5	M90	TAL044-B	2200x1100x1740	2750x1100x1860	1500	1860
GJB110	110	100	4M10G110/5	M110	TAL044-D	2200x1100x1740	2750x1100x1860	1650	2010
GJB150	150	135	6M11G150/5	M150	TAL044-H	2460x1100x1740	2980x1100x2000	1900	2146
GJB165	165	150	6M11G165/5	M165	TAL044-J	2460x1100x1840	3200x1100x2100	1900	2100
GJB220	220	200	6M16G220/5	M220	TAL044-M	2600x1100x1940	3500x1100x2240	2100	2250
GJB250	250	230	6M16G250/5	M250	TAL044-C	1600x1250x1980	3500x1250x2280	2200	2534
GJB275	275	250	6M16G275/5	M275	TAL044-D	1600x1250x1980	3500x1250x2280	2900	2800
GJB300	300	275	6M16G300/5	M330	TAL044-E	2980x1250x2100	3950x1250x2450	3000	2880
GJB350	350	320	6M16G350/5	M350	TAL044-G	2980x1250x2100	3950x1250x2450	3400	4500
GJB400	400	360	6M21G400/5	M400	TAL044-H	3300x1600x2400	4640x1600x2750	3530	4800
GJB440	440	400	6M21G440/5	M450	TAL0473-A	3300x1600x2400	4640x1600x2750	3890	4900
GJB500	500	450	6M21G500/5	M500	TAL0473-B	3600x1600x2400	4640x1600x2750	4070	4992
GJB550	550	500	6M21G550/5	M550	TAL0473-C	3600x1600x2400	4640x1600x2750	4190	6050
GJB660	660	600	8M21G660/5	M660	TAL0473-E	3600x2100x2440	5000x2100x3150	5100	6200
GJB715	715	650	6M33G715/5	M750	TAL0473-F	3600x2100x2440	5000x2100x3150	6610	6400
GJB750	750	680	6M33G750/5	M750	TAL049-B	3600x2100x2440	5450x2100x3330	6700	8560
GJB825	825	750	6M33G825/5	M850	TAL049-C	4600x2100x2570	5450x2100x3330	7300	9020
GJB900	900	815	12M26G900/5	M950	TAL049-C	4600x2100x2570	5450x2100x3330	9300	11040
GJB1000	1000	900	12M26G1000/5	M1000	TAL049-D	5500x2250x2720	5800x2250x3480	9325	11065
GJB1100	1120	1020	12M26G1100/5	M1100	TAL049-E	5000x2250x2720	5800x2250x3480	9610	11360
GJB1250	1250	1150	12M33G1250/5	M1250	LSA 50.2-M6	5000x2250x2720	5800x2250x3420	9720	12500
GJB1400	1400	1250	12M33G1400/5	M1500	LSA 50.2-M6	5000x2250x2720	5800x2250x3420	9800	12850
GJB1500	1500	1375	12M33G1500/5	M1500	LSA 50.2-L7	5000x2250x2720	7200x2310x3380	9920	13450
GJB1650	1650	1500	12M33G1650/5	M1670	LSA 50.2-L8	5000x2250x2720	7200x2310x3380	10700	19300
GJB1900	1900	1750	16M33G1900/5	M2000	LSA 52.3-S5	6500X2350X2700	12000X2350X3150	13500	20400
GJB2000	2000	1830	16M33G2000/5	M2000	LSA 52.3-S5	6500X2350X2700	12000X2350X3300	13600	20600
GJB2250	2250	2050	16M33G2250/5^	M2400	LSA 52.3-S6	6500X2350X2700	12000X2350X3300	13900	21000
GJB2500	2500	2250	20M33G2500/5^	M2500	LSA 52.3-S7	6500X2350X2700	12000X2350X3300	14500	21300
GJB2750	2750	2500	12M55G2750/5^	M2750	LSA 52.3-L12	6500X2350X2700	12000X2350X3500	16000	23000



GJW-X SERIES

250 kVA - 1385 kVA

MODEL	400V / 230V		ENGINE	ALTERNATOR	DIMENSIONS (mm)		WEIGHT (kg)	
	STAND BY (kVA)	PRIME (kVA)			OPEN SET	CANOPIED	OPEN SET	CANOPIED
GJW250X	250	225	TAD830GE	M250	2600x1100x1980	3500x1250x2280	1800	2350
GJW300X	300	270	TAD831GE	M330	2600x1100x1980	3500x1250x2280	1950	2500
GJW350X	350	315	TAD1332GE	M350	3300x1600x2400	4640x1600x2750	3300	3900
GJW440X	440	400	TAD1333GE	M450	3300x1600x2400	4640x1600x2750	3500	4200
GJW520X	520	470	TAD1534GE	M500	3300x1600x2400	4640x1600x2750	3700	4400
GJW550X	550	500	TAD1534GE	M500	3300x1600x2400	4640x1600x2750	3900	4500
GJW580X	580	525	TAD2636GE	M600	3600x2100x2440	5000x2100x3050	5250	6300
GJW630X	630	570	TAD2637GE	M660	3600x2100x2440	5000x2100x3050	5500	6500
GJW700X	700	630	TAD2638GE	M700	3600x2100x2440	5000x2100x3050	5700	6700
GJW750X	750	680	TAD2839GE	M750	3600x2100x2440	5000x2100x3050	5800	6900
GJW900X	900	818	TAD2840GE	M950	4600x2100x2570	5450x2100x3170	6250	7250
GJW1000X	1000	900	TAD2841GE	M1000	4450x2250x2720	5800x2250x3330	7500	8500
GJW1100X	1100	1000	TAD3342GE	M1100	4450x2250x2720	5800x2250x3330	7650	8650
GJW1250X	1250	1135	TAD3343GE	M1250	4450x2250x2720	5800x2250x3330	9300	10900
GJW1385X	1385	1250	TAD3344GE	M1350	4450x2250x2720	5800x2250x3330	9700	11200



GJY SERIES

11 kVA - 110 kVA

MODEL	400V / 230V		ENGINE	ALTERNATOR	DIMENSIONS (mm)		WEIGHT (kg)	
	STAND BY (kVA)	PRIME (kVA)			OPEN SET	CANOPIED	OPEN SET	CANOPIED
GJY11	11	10	YD380D	M12	1500x750x1100	1900x920x1340	500	690
GJY12	12	11	YD385D	M12	1500x750x1100	1900x920x1340	510	700
GJY15	15	14	YD480D	M15	1500x750x1100	1900x920x1340	550	710
GJY20	20	17	YND485D	M20	1400x750x1100	1900x920x1340	700	716
GJY25	25	22	YSD490D	M25	1400x750x1100	2225x950x1660	720	900
GJY28	28	25	Y490D	M30	1400x750x1100	2225x950x1660	730	910
GJY30	30	27	Y495D	M30	1800x950x1400	2225x950x1660	750	932
GJY33	33	30	Y4100D	M33	1800x950x1400	2225x950x1660	760	950
GJY40	40	35	Y4102D	M40	1800x950x1400	2225x950x1660	780	1030
GJY44	44	40	Y4105D	M45	1800x950x1400	2225x950x1660	810	1040
GJY50	50	45	Y4110D	M50	1800x950x1400	2225x950x1660	830	1156
GJY55	55	50	Y4102ZLD	M55	1800x950x1400	2240x1000x1860	910	1220
GJY66	66	58	Y4105ZLD	M66	1800x950x1500	2240x1000x1860	930	1300
GJY75	75	68	YD4EZLD	M83	1800x950x1500	2750x1100x1860	950	1366
GJY100	100	87	Y4110ZLDA	M110	1900x950x1500	2750x1100x1860	1120	1400
GJY110	110	110	YD4GZLD	M110	1900x950x1500	2750x1100x1860	1190	1400



GJD SERIES

65 kVA - 1000 kVA

MODEL	400V / 230V		ENGINE	ALTERNATOR		DIMENSIONS (mm)		WEIGHT (kg)	
	STAND BY (kVA)	PRIME (kVA)		MARANELLO	LEROY SOMER	OPEN SET	CANOPIED	OPEN SET	CANOPIED
GJD66	65	60	SP344CB	M66	TAL-042-H	1900x900x1610	2440x1000x1860	890	1370
GJD88	85	80	SP344CC	M88	TAL-044-C	2200x1100x1740	2750x1100x1860	1000	1410
GJD170	170	150	DP086TA	M175	TAL044-K	2460x1100x1840	3200x1100x2100	1500	1900
GJD225	225	200	P086TI	M220	TAL044-M	2600x1100x1940	3500x1100x2240	1900	2100
GJD250	250	230	DP086LA	M250	TAL-046-C	1600x1250x1980	3500x1250x2280	2100	2250
GJD300	300	275	P126TI	M330	TAL-046-E	2980x1250x2100	3950x1250x2450	2900	2800
GJD330	330	300	P126TI-II	M330	TAL-046-F	2980x1250x2100	3950x1250x2450	3000	2880
GJD410	410	370	DP126LB	M430	TAL-046-H	3300x1600x2400	4640x1600x2750	3400	4500
GJD440	440	400	DP126LCE	M450	TAL-047-A	3300x1600x2400	4640x1600x2750	3530	4800
GJD490	490	445	PI58LE	M500	TAL-047-B	3600x1600x2400	4640x1600x2750	3890	4900
GJD510	510	460	DP158LC	M550	TAL-047-C	3600x1600x2400	4640x1600x2750	4070	4992
GJD580	580	525	DP158LD	M600	TAL0473-D	3600x2100x2440	5000x2100x3150	4190	6050
GJD630	630	575	DP180LA	M660	TAL-047-E	3600x2100x2440	5000x2100x3150	4300	6250
GJD710	710	640	DP180LB	M750	TAL-047-F	3600x2100x2440	5000x2100x3150	5100	6350
GJD750	750	680	DP222LB	M750	TAL-049-B	3600x2100x2440	5450x2100x3330	5250	6450
GJD825	825	750	DP222LC	M850	TAL-049-C	4600x2100x2570	5450x2100x3330	6950	8250
GJD900	900	800	DP222CB	M950	TAL-049-C	4600x2100x2570	5450x2100x3330	7500	8500
GJD1000	1000	900	DP222CC	M1000	TAL-049-D	5500x2250x2720	5800x2250x3480	7650	8950

MODEL	400V / 230V		ENGINE	ALTERNATOR		DIMENSIONS (mm)		WEIGHT (kg)	
	STAND BY (kVA)	PRIME (kVA)		MARANELLO	LEROY SOMER	OPEN SET	CANOPIED	OPEN SET	CANOPIED
GJV94	94	85	TAD530GE	M96	TAL044-C	2200x1100x1740	2750x1100x1860	1000	1410
GJV110	110	100	TAD531GE	M110	TAL044-D	2200x1100x1740	2750x1100x1860	1360	1560
GJV145	145	130	TAD532GE EDC4	M150	TAL044-H	2460x1100x1740	2980x1100x2000	1500	1860
GJV165	165	150	TAD731GE	M165	TAL044-I	2460x1100x1840	3200x1100x2100	1650	2010
GJV200	200	180	TAD732GE EDC4	M200	TAL044-L	2600x1100x1940	3500x1100x2240	1900	2146
GJV220	220	200	TAD733GE EDC4	M220	TAL044-M	2600x1100x1940	3500x1100x2240	1900	2100
GJV275	275	250	TAD734GE	M275	TAL046-D	1600x1250x1980	3500x1250x2280	2200	2534
GJV330	330	300	TAD1341GE	M330	TAL046-F	2980x1250x2100	3950x1250x2450	2900	2800
GJV385	385	350	TAD1342GE	M400	TAL046-H	2980x1250x2100	3950x1250x2450	3400	4500
GJV415	415	375	TAD1343GE	M450	TAL046-H	3300x1600x2400	4640x1600x2750	3400	4600
GJV450	450	400	TAD1344GE	M450	TAL0473-A	3300x1600x2400	4640x1600x2750	3530	4800
GJV500	500	450	TAD1345GE	M500	TAL0473-B	3600x1600x2400	4640x1600x2750	3890	4900
GJV550	550	500	TAD1641GE	M550	TAL0473-C	3600x1600x2400	4640x1600x2750	4070	4992
GJV630	630	570	TAD1642GE	M660	TAL0473-E	3600x2100x2440	5000x2100x3150	4190	6050
GJV715	715	652	TWD1644GE	M750	TAL0473-F	3600x2100x2440	5000x2100x3150	5100	6200
GJV770	770	700	TWD1645GE	M750	TAL049-B	3600x2100x2440	5450x2100x3330	5610	6400

GJV SERIES

94 kVA - 770 kVA



GJMT SERIES

1000 kVA - 2500 kVA

MODEL	400V / 230V		ENGINE	ALTERNATOR		DIMENSIONS (mm)		WEIGHT (kg)	
	STAND BY (kVA)	PRIME (kVA)		MARANELLO	LEROY SOMER	OPEN SET	CANOPIED	OPEN SET	CANOPIED
GJMT1000	1000	900	S12A2-PTA2	M1000	TAL-049-D	4600x2100x2350	6300x2100x3445	9300	11040
GJMT1100	1100	1000	S12H-PTA	M1100	TAL-049-E	4600x2100x2350	6300x2100x3445	9325	11065
GJMT1175	1175	1060	S12H-PTA	M1250	LSA 50.2 M6	4650x2100x2350	6300x2100x3445	9610	11360
GJMT1430	1430	1290	S12R-PTA	M1500	LSA 50.2-L7	4650x2100x2700	6300x2100x3445	9720	12500
GJMT1550	1550	1400	S12R-PTA2	M1500	LSA 50.2 L8	5500x2100x2700	6500x2310x3150	9800	12850
GJMT1650	1650	1500	S12R-PTAA2	M1650	LSA 50.2 L8	5500x2100x2700	6500x2310x3150	9920	13450
GJMT1915	1950	1720	S16R-PTA	M2000	LSA52.3 S5	6500x2350x2700	12000x2350x3300	10700	19300
GJMT2100	2100	1890	S16R-PTA2	M2250	LSA52.3 S5	6500x2350x2700	12000x2350x3300	13500	20400
GJMT2250	2250	2000	S16R-PTAA2	M2250	LSA52.3 S6	6500x2350x2700	12000x2350x3300	13600	20600
GJMT2500	2500	2250	S16R2-PTAW	M2500	LSA52.3 L9	6500x2350x2700	12000x2350x3300	13900	20900

GJT SERIES

33 kVA - 110 kVA

MODEL	400V / 230V		ENGINE	ALTERNATOR	DIMENSIONS (mm)		WEIGHT (kg)	
	STAND BY (kVA)	PRIME (kVA)			OPEN SET	CANOPIED	OPEN SET	CANOPIED
GJT33	33	30	3DN290048C	M33	1770x850x1440	2225x950x1660	710	960
GJT44	44	40	3DT290055C	M45	1770x850x1440	2225x950x1660	750	1010
GJT55	55	50	3DT31T075C	M55	1900x900x1610	2440x1000x1860	860	1300
GJT66	66	60	4DT39T085C	M66	1900x900x1610	2440x1000x1860	890	1370
GJT77	77	70	4DT39T095C	M75	1900x900x1610	2440x1000x1860	950	1410
GJT88	88	80	4DT41G105C	M88	2200x1100x1740	2750x1100x1860	1000	1440
GJT110	110	100	4DT41G115C	M110	2200x1100x1740	2750x1100x1860	1360	1560

GJK SERIES

11 kVA - 33 kVA

MODEL	400V / 230V		ENGINE	ALTERNATOR		DIMENSIONS (mm)		WEIGHT (kg)	
	STAND BY (kVA)	PRIME (kVA)		MARANELLO	LEROY SOMER	OPEN SET	CANOPIED	OPEN SET	CANOPIED
GJK11	11	10	D1105-E2BG	M12	LSA040VS1	1550x820x1080	1900x920x1340	420	580
GJK13	13	12	D1505-E2-BG	M15	TAL040C	1550x820x1080	1900x920x1340	530	640
GJK17	17	15	D1703-E2BG	M20	TAL040F	1550x820x1080	1900x920x1340	620	716
GJK22	22	20	V2203-E2BG	M25	TAL040F	1770x850x1440	2225x950x1660	725	932
GJK33	33	30	V3300-E2BG2	M33	TAL042C	1770x850x1440	2225x950x1660	825	1000





GJYN SERIES

8 kVA - 70 kVA

MODEL	400V / 230V		ENGINE	ALTERNATOR		DIMENSIONS (mm)		WEIGHT (kg)	
	STAND BY (kVA)	PRIME (kVA)		MARANELLO	LEROY SOMER	OPEN SET	CANOPIED	OPEN SET	CANOPIED
GJYN8	8	7.5	3TNV70-GGE	M10	TAL-040-B	1550x820x1080	1900x920x1340	420	520
GJYN11	11	10	3TNV76-GGE	M15	TAL-040-B	1550x820x1080	1900x920x1340	500	590
GJYN16	15	13	3TNV88-GGE	M15	TAL-040-D	1550x820x1080	1900x920x1340	550	600
GJYN23	23	21	4TNV88-GGE	M25	TAL-040-F	1550x820x1080	1900x920x1340	650	730
GJYN27	27	24	4NTV84T-GGE	M30	TAL042-A	1770x850x1440	2225x950x1660	710	1010
GJYN43	43	38	4TNV98-GGE	M45	TAL042-E	1770x850x1440	2225x950x1660	750	1010
GJYN52	52	47	4TNV98T-GGE	M55	TAL042-G	1770x850x1440	2225x950x1660	820	1220
GJYN62	62	56	4TNV106-GGE	M66	TAL042-H	1900x900x1610	2440x1000x1860	980	1300
GJYN70	70	63	4TNV106T-GGE	M75	TAL044-A	1900x900x1610	2440x1000x1860	1100	1410

ISUZU

GJIS SERIES

25 kVA - 50 kVA

MODEL	400V / 230V		ENGINE	ALTERNATOR	DIMENSIONS (mm)		WEIGHT (kg)	
	STAND BY (kVA)	PRIME (kVA)			OPEN SET	CANOPIED	OPEN SET	CANOPIED
GJIS25	25	22	JE493DB-04	M25	1400x750x1100	1920x920x1180	720	850
GJIS30	30	27	JE493DB-02	M30	1800x950x1400	2250x950x1640	730	900
GJIS35	35	32	JE493ZDB-04	M35	1800x950x1400	2250x950x1640	750	960
GJIS50	50	45	JE493ZLDB-02	M50	1800x950x1400	2250x950x1640	820	1050



GJL SERIES

18 kVA - 908 kVA

MODEL	400V / 230V		ENGINE	ALTERNATOR		DIMENSIONS (mm)		WEIGHT (kg)	
	STAND BY (kVA)	PRIME (kVA)		MARANELLO	LEROY SOMER	OPEN SET	CANOPIED	OPEN SET	CANOPIED
GJL18 S	18	16	SA42301 - Stage II	M20	TAL040-E	1550x820x1080	1900x920x1340	420	700
GJL25 S	25	23	SA42701 - Stage II	M25	TAL042-A	1550x820x1080	1900x920x1340	450	730
GJL30 S	30	27	SA43001 - Stage II	M30	TAL042-B	1770x850x1440	2225x950x1660	710	1010
GJL35 S	35	32	SA43201 - Stage II	M35	TAL042-C	1770x850x1440	2225x950x1660	750	1050
GJL44 S	44	40	SA43202 - Stage II	M44	TAL042-E	1770x850x1440	2225x950x1660	810	1160
GJL55 S	55	50	SA43501 - Stage II	M55	TAL042-G	1770x850x1440	2225x950x1660	850	1220
GJL70 S	70	63	SA44301 - Stage II	M75	TAL044-A	1900x900x1610	2440x1000x1860	950	1440
GJL75 S	75	68	SA44302 - Stage II	M75	TAL044-A	1900x900x1610	2440x1000x1860	970	1440
GJL 60 V	60	55	LP44301 - Stage II	M66	TAL042-H	1900x900x1610	2440x1000x1860	890	1370
GJL 70 V	70	63	LP44302 - Stage II	M75	TAL044-A	1900x900x1610	2440x1000x1860	950	1440
GJL90 V	90	81	LP44303 - Stage II	M94	TAL044-C	2200x1100x1740	2750x1100x1840	1000	1490
GJL110 V	110	100	LP44304 - Stage II	M110	TAL044-D	2200x1100x1740	2750x1100x1840	1360	1540
GJL125 V	125	113	LP44305 - Stage II	M130	TAL044-E	2200x1100x1740	2750x1100x1840	1400	1600
GJL138 V	138	125	LP44306 - Stage II	M160	TAL044-E	2200x1100x1740	2750x1100x1840	1450	1650
GJL151 V	151	138	LP44501 - Stage II	M155	TAL044-H	2440x1100x1740	2980x1100x2000	1500	1860
GJL165 V	165	150	LP44502 - Stage II	M165	TAL044-J	2440x1100x1740	2980x1100x2000	1650	2010
GJL206 V	206	188	LP44503 - Stage II	M200	TAL044-L	2600x1100x1940	3500x1100x2240	1900	2700
GJL227 V	227	204	LP48901 - Stage II	M220	TAL044-M	2600x1100x1940	3500x1100x2240	1900	2760
GJL248 V	248	225	LP48902 - Stage II	M250	TAL046-C	1600x1250x1900	3500x1250x2280	2100	2250
GJL275 V	275	250	LP48903 - Stage II	M275	TAL046-D	1600x1250x1900	3500x1250x2280	2200	2534
GJL308 V	308	280	LP61201 - Stage II	M300	TAL046-E	2980x1250x2100	3950x1250x2450	2900	2800
GJL358 V	358	325	LP61202 - Stage II	M350	TAL046-G	2980x1250x2100	3950x1250x2450	3000	2880
GJL385 V	385	350	LP61203 - Stage II	M400	TAL046-H	3300x1600x2400	4640x1600x2750	3400	4300
GJL413 V	413	375	LP61301 - Stage II	M450	TAL047-A	3300x1600x2400	4640x1600x2750	3500	4750
GJL440 V	440	400	LP61302 - Stage II	M450	TAL047-A	3300x1600x2400	4640x1600x2750	3540	4830
GJL90 YM	90	83	LP443E03 - Stage III - ECU	M90	TAL044-C	2200x1100x1740	2750x1100x1840	1000	1490
GJL100 YM	100	90	LP443E04 - Stage III - ECU	M90	TAL044-C	2200x1100x1740	2750x1100x1840	1300	1580
GJL110 YM	110	100	LP443E05 - Stage III - ECU	M110	TAL044-D	2200x1100x1740	2750x1100x1840	1360	1640
GJL125 YM	125	113	LP443E06 - Stage III - ECU	M125	TAL044-E	2200x1100x1740	2750x1100x1840	1400	1600
GJL159 YM	159	138	LP665E01 - Stage III - ECU	M165	TAL044-I	2440x1100x1740	2980x1100x2000	1500	1860
GJL165 YM	165	150	LP445E02 - Stage III - ECU	M165	TAL044-J	2440x1100x1740	2980x1100x2000	1650	2010
GJL206 YM	206	188	LP665E02 - Stage III - ECU	M200	TAL044-L	2600x1100x1940	3500x1100x2240	1900	2700
GJL220 YM	220	200	LP665E04 - Stage III - ECU	M220	TAL044-M	2600x1100x1940	3500x1100x2240	1970	2770
GJL220 YM	220	200	LP489E01 - Stage III - ECU	M220	TAL044-M	2600x1100x1940	3500x1100x2240	2000	2700
GJL248 YM	248	225	LP489E02 - Stage III - ECU	M250	TAL046-C	1600x1250x1900	3500x1250x2280	2100	2250
GJL275 YM	275	250	LP489E03 - Stage III - ECU	M275	TAL046-D	1600x1250x1900	3500x1250x2280	2200	2534
GJL303 YM	303	275	LP669E04 - Stage III - ECU	M300	TAL046-E	2980x1250x2100	3950x1250x2450	2900	2800
GJL344 YM	344	313	LP612E01 - Stage III - ECU	M350	TAL046-G	2980x1250x2100	3950x1250x2450	3000	2880
GJL385 YM	385	350	LP612E02 - Stage III - ECU	M400	TAL046-H	3300x1600x2400	4640x1600x2750	3400	4500
GJL413 YM	413	375	LP612E03 - Stage III - ECU	M450	TAL047-A	3300x1600x2400	4640x1600x2750	3500	4770
GJL440 YM	440	400	LP473E01 - Stage III - ECU	M450	TAL047-A	3300x1600x2400	4640x1600x2750	3530	4800
GJL495 YM	495	450	LP612E02 - Stage III - ECU	M500	TAL047-B	3600x1600x2400	4640x1600x2750	3890	4900
GJL550 YM	550	500	LP613E03 - Stage III - ECU	M550	TAL047-C	3600x1600x2400	4640x1600x2750	4070	4992
GJL550 MM	550	500	LP625E01 - Stage III - ECU	M550	TAL047-C	3600x1600x2400	4640x1600x2750	4300	5300
GJL643 MM	643	575	LP625E02 - Stage III - ECU	M640	TAL047-E	3600x2100x2440	5000x2100x3150	4190	4050
GJL700 MM	700	638	LP625E03 - Stage III - ECU	M700	TAL047-F	3600x2100x2440	5000x2100x3150	5100	6200
GJL770 MM	770	700	LP425E04 - Stage III - ECU	M750	TAL049-B	3600x2100x2440	5450x2100x3330	6410	6400
GJL825 MM	825	750	LP625E05 - Stage III - ECU	M825	TAL049-C	4600x2100x2570	5450x2100x3330	6700	8540
GJL908 MM	900	825	LP625E07 - Stage III - ECU	M900	TAL049-C	4600x2100x2570	5450x2100x3330	6900	8750

PORTABLE GENERATOR SETS



GÜÇBİR

GÜÇBİR

GJD SERIES

7 kVA - 15 kVA

MODEL	STANDBY	PRIME	PHASE	TYPE	ENGINE MODEL	NET WEIGHT	DIMENSIONS
	kVA	kVA				kg	mm
GJD7000H	7	6	1	Open Type	188FAE	110	720x492x655
GJD7000H-3	7	6	3	Open Type	188FAE	115	720x492x655
GJD7000S	7	6	1	Soundproof Canopy	188FAE	171	930x530x740
GJD7000S-3	7	6	3	Soundproof Canopy	188FAE	176	930x530x740
GJD8000H	8	7	1	Open Type	192FAE	115	720x492x655
GJD8000H-3	8	7	3	Open Type	192FAE	120	720x492x655
GJD8000S	8	7	1	Soundproof Canopy	192FAE	175	930x530x740
GJD8000S-3	8	7	3	Soundproof Canopy	192FAE	180	930x530x740
GJD10000H	10	9	1	Open Type	1100FAE	130	720x492x655
GJD10000H-3	10	9	3	Open Type	1100FAE	135	720x492x655
GJD10000S	10	9	1	Soundproof Canopy	198FAE	210	1100x760x860
GJD10000S-3	10	9	3	Soundproof Canopy	198FAE	210	1100x760x860
GJD14000S	15	13,5	1	Soundproof Canopy	292FAE	320	1300x700x955
GJD14000S-3	15	13,5	3	Soundproof Canopy	292FAE	320	1300x700x955

GÜÇBİR

GJB SERIES

1.2 kVA - 18 kVA

MODEL	STANDBY	PRIME	PHASE	TYPE	ENGINE MODEL	NET WEIGHT	DIMENSIONS
	kVA	kVA				kg	mm
GJB1200	1,2	1	1	Open Type	CP154F	41	510*390*450
GJB3600	3	2,8	1	Open Type	CP170F	43	620*490*510
GJB3600E	3	2,8	1	Open Type	CP188F	43	620*490*510
GJB6500E	5,5	5	1	Open Type	CP192F	93	720*560*585
GJB7000S	5,5	5	1	Soundproof Canopy	SC420	100	795*565*710
GJB7000S3	5,5	5	3	Soundproof Canopy	SC420	104	795*565*710
GJB7500E	7	6,5	1	Open Type	CP192F	95	720*560*585
GJB8000S	7	6,5	1	Soundproof Canopy	SC460	105	795*570*830
GJB8000S3	7	6,5	3	Soundproof Canopy	SC460	110	795*570*830
GJB9500E	8	7,5	1	Open Type	SC192FB	98	720*560*585
GJB9500E3	8	7,5	3	Open Type	SC192FB	98	720*560*585
GJB13000E	11	10	1	Open Type	SV690	170	785*660*930
GJB13000E3	11	10	3	Open Type	SV690	176	785*660*930
GJB13000S	11	10	1	Soundproof Canopy	SV690	180	1310*710*970
GJB13000S3	11	10	3	Soundproof Canopy	SV690	186	1310*710*970
GJB15000E	13	12	1	Open Type	SV750	180	830*660*930
GJB15000E3	13	12	3	Open Type	SV750	185	830*660*930
GJB18000E	16	15	1	Open Type	SV1000	215	960*680*1000
GJB18000E3	16	15	3	Open Type	SV1000	222	960*680*1000
GJB20000E	18	17	1	Open Type	SV1000	230	955*675*985
GJB20000E3	18	17	3	Open Type	SV1000	240	955*675*985



PERKINS

DIESEL GENERATOR SETS

 **Perkins**

GJP SERIES

10 kVA - 2500 kVA

GJP SERIES

10 kVA - 2500 kVA

MODEL		GJP10	GJP15	GJP22	GJP33	GJP50	GJP66	GJP72	GJP88	GJP110
STAND BY	kVA	10	15	22	33	50	66	72	88	110
	kW	8	12	17,6	26,4	40	52,8	57,6	70,4	88
PRIME	kVA	9	13	20	30	45	60	65	80	100
	kW	7,2	10,4	16	24	36	48	52	64	80
RATED SPEED	r.p.m	1500	1500	1500	1500	1500	1500	1500	1500	1500
VOLTAGE	V	230/400	230/400	230/400	230/400	230/400	230/400	230/400	230/400	230/400
POWER FACTOR	cos Phi	0,8	0,8	0,8	0,8	0,8	0,8	0,8	0,8	0,8
ENGINE										
RATED OUTPUT POWER	kW	8,4	14	18	27,9	36	55	59,6	65,6	93,6
BRAND		PERKINS	PERKINS	PERKINS	PERKINS	PERKINS	PERKINS	PERKINS	PERKINS	PERKINS
MODEL		403A-11G1	403A-15G1	404A-22G1	1103A-33G	1103A-33TG1	1103A-33TG2	1104A-44TG1	1104A-44TG2	1104C-44TAG2
ENGINE TYPE		4 Stroke - Diesel	4 Stroke - Diesel	4 Stroke - Diesel	4 Stroke - Diesel	4 Stroke - Diesel	4 Stroke - Diesel	4 Stroke - Diesel	4 Stroke - Diesel	4 Stroke - Diesel
INJECTION TYPE		Direct Injection	Direct Injection	Direct Injection	Direct Injection	Direct Injection	Direct Injection	Direct Injection	Direct Injection	Direct Injection
ASPIRATION TYPE		Naturally Aspirated	Naturally Aspirated	Naturally Aspirated	Naturally Aspirated	Turbo Charge	Turbo Charge	Turbo Charge	Turbo Charge	Turbo Charge
NUMBER OF CYLINDERS		3	3	3	3	3	3	4	4	4
CYLINDER BORE AND STROKE	mm	77 x 81	84 x 90	84 x 100	105 x 127	105 x 127	105 x 127	105 x 127	105 x 127	105 x 127
CYLINDER VOLUME	L	1,131	1,496	2,21	3,31	3,3	3,3	4,4	4,4	4,4
COOLING TYPE		Water Cooled	Water Cooled	Water Cooled	Water Cooled	Water Cooled	Water Cooled	Water Cooled	Water Cooled	Water Cooled
COMPRESSION RATE		23:01	22,5:1	23,3:1	19,25:1	17,25:1	17,25:1	17,25:1	17,25:1	18,23:1
STAND BY LOAD FUEL CONSUMPTION	l/h	3,6	4,1	6,1	7,9	12	15,4	16,2	16,5	29,7
100% PRIME LOAD FUEL CONSUMPTION	l/h	3	3,7	5,3	7,1	10,7	13,9	14,8	14,8	26,9
75% PRIME LOAD FUEL CONSUMPTION	l/h	2,3	2,8	4	5,4	8,2	10,4	11,2	11,2	20,2
50% PRIME LOAD FUEL CONSUMPTION	l/h	1,7	2	2,9	3,9	5,7	7,2	8	8	14,1
TOTAL OIL CAPACITY	L	4,9	6	10,6	8,3	8,3	8,3	8	8	8
TOTAL COOLING CAPACITY	L	5,2	6	7	10,2	10,2	10,2	13	13	12,6
GOVERNOR TYPE	Type	Mechanical	Mechanical	Mechanical	Mechanical / Electronic	Electronic	Electronic	Electronic	Electronic	Electronic
ALTERNATOR										
BRAND		Marelli/Lary/Sonar/Serford	Marelli/Lary/Sonar/Serford	Marelli/Lary/Sonar/Serford	Marelli/Lary/Sonar/Serford	Marelli/Lary/Sonar/Serford	Marelli/Lary/Sonar/Serford	Marelli/Lary/Sonar/Serford	Marelli/Lary/Sonar/Serford	Marelli/Lary/Sonar/Serford
DIMENSIONS (OPEN SET)										
LXWXH	mm	1550x820x1080	1550x820x1080	1550x820x1080	1770x850x1440	1770x850x1440	1900x900x1610	1900x900x1610	2200x1000x1610	2200x1000x1610
WEIGHT	kg	400	475	545	700	775	950	1020	1200	1350
FUEL TANK	lt	70	70	70	135	135	220	220	300	300
DIMENSIONS (CANOPIED)										
LXWXH	mm	1900x920x1340	1900x920x1340	1900x920x1340	2225x950x1660	2225x950x1660	2440x1000x1860	2440x1000x1860	2750x1100x1860	2750x1100x1860
WEIGHT	kg	550	600	730	1010	1220	1370	1440	1410	1560
FUEL TANK	lt	70	70	70	135	135	220	220	300	300

GJP SERIES

10 kVA - 2500 kVA

MODEL		GJP150	GJP165	GJP200	GJP220	GJP250	GJP275	GJP300	GJP330	GJP400
STAND BY	kVA	150	165	200	220	250	275	300	330	400
	kW	120	132	160	176	200	220	240	264	320
PRIME	kVA	135	150	180	200	230	250	275	300	350
	kW	108	120	144	160	184	200	220	240	280
RATED SPEED	r.p.m	1500	1500	1500	1500	1500	1500	1500	1500	1500
VOLTAGE	V	230/400	230/400	230/400	230/400	230/400	230/400	230/400	230/400	230/400
POWER FACTOR	cos Phi	0,8	0,8	0,8	0,8	0,8	0,8	0,8	0,8	0,8
ENGINE										
RATED OUTPUT POWER	kW	122,7	155,4	162,7	178,9	204,2	226,2	258	281	324
BRAND		PERKINS	PERKINS	PERKINS	PERKINS	PERKINS	PERKINS	PERKINS	PERKINS	PERKINS
MODEL		1106A-70TG1	1106A-70TAG2	1106A-70TAG3	1106A-70TAG4	1206A-E70TTAG2	1206A-E70TTAG3	1506A-EB0TAG4	1506A-EB0TAG5	2206A-E13TAG2
ENGINE TYPE		4 Stroke - Diesel	4 Stroke - Diesel	4 Stroke - Diesel	4 Stroke - Diesel	4 Stroke - Diesel	4 Stroke - Diesel	4 Stroke - Diesel	4 Stroke - Diesel	4 Stroke - Diesel
INJECTION TYPE		Direct Injection	Direct Injection	Direct Injection	Direct Injection	Direct Injection	Direct Injection	Direct Injection	Direct Injection	Direct Injection
ASPIRATION TYPE		Turbo Charge	Turbo Charge	Turbo Charge	Turbo Charge	Turbo Charge	Turbo Charge & Aftercooler	Turbo Charge & Aftercooler	Turbo Charge & Aftercooler	Turbo Charge & Aftercooler
NUMBER OF CYLINDERS		6	6	6	6	6	6	6	6	6
CYLINDER BORE AND STROKE	mm	105x135	105x135	105x135	105x135	105x135	105x135	112 x 149	112 x 149	130 x 157
CYLINDER VOLUME	L	7,01	7,01	7,01	7,01	7,01	7,01	8,8	8,8	12,5
COOLING TYPE		Water Cooled	Water Cooled	Water Cooled	Water Cooled	Water Cooled	Water Cooled	Water Cooled	Water Cooled	Water Cooled
COMPRESSION RATE		18,2:1	18,2:1	16,0:1	16,0:1	15,8:1	15,8:1	16,1:1	16,1:1	16,3:1
STAND BY LOAD FUEL CONSUMPTION	l/h	33,8	36,1	45,1	49,4	56,6	64,5	66,3	73,1	80
100% PRIME LOAD FUEL CONSUMPTION	l/h	30,3	33,4	41,4	45,8	51	56,9	60,2	64,9	71
75% PRIME LOAD FUEL CONSUMPTION	l/h	22,7	24,7	32	34,7	38	41,5	45,8	48,2	54
50% PRIME LOAD FUEL CONSUMPTION	l/h	15,9	16,4	20,2	23,1	25,5	28,1	31,6	33	37
TOTAL OIL CAPACITY	L	18	18	18	18	16	16	41	41	40
TOTAL COOLING CAPACITY	L	21	21	21	21	25	25	33,2	33,2	33,2
GOVERNOR TYPE	Type	Electronic	Electronic	Electronic	Electronic	Electronic	Electronic	Electronic	Electronic	Electronic
ALTERNATOR										
BRAND		Marelli/Lary/Sonar/Serford	Marelli/Lary/Sonar/Serford	Marelli/Lary/Sonar/Serford	Marelli/Lary/Sonar/Serford	Marelli/Lary/Sonar/Serford	Marelli/Lary/Sonar/Serford	Marelli/Lary/Sonar/Serford	Marelli/Lary/Sonar/Serford	Marelli/Lary/Sonar/Serford
DIMENSIONS (OPEN SET)										
LXWXH	mm	2440x1100x1740	2300x1100x1840	2600x1100x1940	2600x1100x1940	2600x1250x1980	2600x1250x1980	2980x1250x2100	2980x1250x2100	3300x1600x2400
WEIGHT	kg	1500	1675	1864	1750	1968	1968	2000	2350	3100
FUEL TANK	lt	310	320	360	360	550	550	590	590	810
DIMENSIONS (CANOPIED)										
LXWXH	mm	2980x1100x2000	3200x1100x2100	3500x1100x2240	3500x1100x2240	3500x1250x2280	3500x1250x2280	3950x1250x2450	3950x1250x2450	4640x1600x2750
WEIGHT	kg	1868	2010	2146	2100	2250	2534	2880	2900	4500
FUEL TANK	lt	310	320	360	360	550	550	590	590	810

MODEL		GJP450	GJP500	GJP550	GJP660	GJP700	GJP785	GJP825	GJP900	GJP1000
STAND BY	kVA	450	500	550	660	700	785	825	900	1000
	kW	360	400	440	528	560	628	660	720	800
PRIME	kVA	400	455	500	600	650	715	750	800	900
	kW	320	364	400	480	520	572	600	640	720
RATED SPEED	r.p.m	1500	1500	1500	1500	1500	1500	1500	1500	1500
VOLTAGE	V	230/400	230/400	230/400	230/400	230/400	230/400	230/400	230/400	230/400
POWER FACTOR	cos Phi	0,8	0,8	0,8	0,8	0,8	0,8	0,8	0,8	0,8
ENGINE										
RATED OUTPUT POWER	kW	368,4	412	451	540	584	623	676	705	800
BRAND		PERKINS	PERKINS	PERKINS	PERKINS	PERKINS	PERKINS	PERKINS	PERKINS	PERKINS
MODEL		Z206A-E13TAG3	Z506A-E15TAG1	Z506A-E15TAG2	Z806A-E18TAG1A	Z806A-E18TAG2	Z806A-E18TAG4	Z806A-E18TAG5	4006-23TAG3A	4008TAG1A
ENGINE TYPE		4 Stroke - Diesel	4 Stroke - Diesel	4 Stroke - Diesel	4 Stroke - Diesel	4 Stroke - Diesel	4 Stroke - Diesel	4 Stroke - Diesel	4 Stroke - Diesel	4 Stroke - Diesel
INJECTION TYPE		Direct Injection	Direct Injection	Direct Injection	Direct Injection	Direct Injection	Direct Injection	Direct Injection	Direct Injection	Direct Injection
ASPIRATION TYPE		Turbo Charge & Aftercooler	Turbo Charge & Aftercooler	Turbo Charge & Aftercooler	Turbo Charge & Aftercooler	Turbo Charge & Aftercooler	Turbo Charge & Aftercooler	Turbo Charge & Aftercooler	Turbo Charge & Aftercooler	Turbo Charge & Aftercooler
NUMBER OF CYLINDERS		6	6	6	6	6	6	6	6	8
CYLINDER BORE AND STROKE	mm	130 x 157	137 x 171	137 x 171	145 x 183	145 x 183	145 x 183	145 x 183	160 x 190	160 x 190
CYLINDER VOLUME	L	12,5	15,2	15,2	18,13	18,13	18,13	18,13	22,9	30,5
COOLING TYPE		Water Cooled	Water Cooled	Water Cooled	Water Cooled	Water Cooled	Water Cooled	Water Cooled	Water Cooled	Water Cooled
COMPRESSION RATE		16.3:1	16.0:1	16.0:1	14.5:1	14.5:1	14.5:1	14.5:1	13.6:1	13.6:1
STAND BY LOAD FUEL CONSUMPTION	l/h	90	104	111	134	143	196	180	194	217
100% PRIME LOAD FUEL CONSUMPTION	l/h	81	95	100	123	132	178	162	172	194
75% PRIME LOAD FUEL CONSUMPTION	l/h	62	72	76	90	97	130	118	137	142
50% PRIME LOAD FUEL CONSUMPTION	l/h	42	50	53	61	68	90	80	130	97
TOTAL OIL CAPACITY	L	40	62	62	62	62	56	68	113,4	153
TOTAL COOLING CAPACITY	L	51,4	58	58	58	58	109,5	110	170	149
GOVERNOR TYPE	Type	Electronic	Electronic	Electronic	Electronic	Electronic	Electronic	Electronic	Electronic	Electronic
ALTERNATOR										
BRAND		Masarelli/Lusy/Sorrel/Seribat	Masarelli/Lusy/Sorrel/Seribat	Masarelli/Lusy/Sorrel/Seribat	Masarelli/Lusy/Sorrel/Seribat	Masarelli/Lusy/Sorrel/Seribat	Masarelli/Lusy/Sorrel/Seribat	Masarelli/Lusy/Sorrel/Seribat	Masarelli/Lusy/Sorrel/Seribat	Masarelli/Lusy/Sorrel/Seribat
DIMENSIONS (OPEN SET)										
LXWXH	mm	3300x1600x2400	3600x1600x2280	3600x1600x2280	3600x2100x2440	3600x2100x2440	4600x2100x2320	4600x2100x2570	4600x2100x2570	5000x2250x2720
WEIGHT	kg	3500	3650	3792	4190	4365	4500	7342	7743	8196
FUEL TANK	lt	810	810	810	1450	1450	1490	1490	1490	2060
DIMENSIONS (CANOPIED)										
LXWXH	mm	4640x1600x2750	4640x1600x2750	4640x1600x2750	5000x2100x3150	5000x2100x3150	5450x2100x3080	5450x2100x3330	5450x2100x3330	5800x2250x3480
WEIGHT	kg	4800	4850	4992	6200	6375	6500	7342	8100	8768
FUEL TANK	lt	810	810	810	1410	1410	1490	1490	1490	2060

MODEL		GJP1100	GJP1250	GJP1385	GJP1500	GJP1650	GJP1875	GJP2000	GJP2250	GJP2500
STAND BY	kVA	1100	1250	1385	1500	1650	1875	2000	2250	2500
	kW	880	1000	1108	1200	1320	1500	1600	1800	2000
PRIME	kVA	1000	1125	1250	1350	1500	1710	1850	2000	2250
	kW	800	900	1000	1080	1200	1368	1480	1600	1800
RATED SPEED	r.p.m	1500	1500	1500	1500	1500	1500	1500	1500	1500
VOLTAGE	V	230/400	230/400	230/400	230/400	230/400	230/400	230/400	230/400	230/400
POWER FACTOR	cos Phi	0,8	0,8	0,8	0,8	0,8	0,8	0,8	0,8	0,8
ENGINE										
RATED OUTPUT POWER	kW	899	997	1106	1207	1331	1500	1648	1774	1975
BRAND		PERKINS	PERKINS	PERKINS	PERKINS	PERKINS	PERKINS	PERKINS	PERKINS	PERKINS
MODEL		4008TAG2A	4008-30TAG3	4012-46TWG2A	4012-46TWG3A	4012-46TAG2A	4012-46TAG3A	4016-61TRG1	4016-61TRG2	4016-61TRG3
ENGINE TYPE		4 Stroke - Diesel	4 Stroke - Diesel	4 Stroke - Diesel	4 Stroke - Diesel	4 Stroke - Diesel	4 Stroke - Diesel	4 Stroke - Diesel	4 Stroke - Diesel	4 Stroke - Diesel
INJECTION TYPE		Direct Injection	Direct Injection	Direct Injection	Direct Injection	Direct Injection	Direct Injection	Direct Injection	Direct Injection	Direct Injection
ASPIRATION TYPE		Turbo Charge & Aftercooler	Turbo Charge & Aftercooler	Turbo Charge & Aftercooler	Turbo Charge & Aftercooler	Turbo Charge & Aftercooler	Turbo Charge & Aftercooler	Turbo Charge & Aftercooler	Turbo Charge & Aftercooler	Turbo Charge & Aftercooler
NUMBER OF CYLINDERS		8	8	12	12	12	12	16	16	16
CYLINDER BORE AND STROKE	mm	160 x 190	160 x 190	160 x 190	160 x 190	160 x 190	160 x 190	160 x 190	160 x 190	160 x 190
CYLINDER VOLUME	L	30,5	30,5	45,8	45,8	45,8	45,8	61,1	61,1	61,1
COOLING TYPE		Water Cooled	Water Cooled	Water Cooled	Water Cooled	Water Cooled	Water Cooled	Water Cooled	Water Cooled	Water Cooled
COMPRESSION RATE		13.6:1	13.6:1	13.6:1	13.6:1	13.6:1	13.6:1	13.6:1	13.6:1	13.6:1
STAND BY LOAD FUEL CONSUMPTION	l/h	248	269	287	315	335	405	480	513	537
100% PRIME LOAD FUEL CONSUMPTION	l/h	220	244	258	281	301	370	447	442	503
75% PRIME LOAD FUEL CONSUMPTION	l/h	173	188	196	212	237	275	337	317	355
50% PRIME LOAD FUEL CONSUMPTION	l/h	160	120	141	149	162	187	212	209	233
TOTAL OIL CAPACITY	L	153	153	177	177	177	177	213	213	213
TOTAL COOLING CAPACITY	L	149	149	73	73	73	73	120	120	120
GOVERNOR TYPE	Type	Electronic	Electronic	Electronic	Electronic	Electronic	Electronic	Electronic	Electronic	Electronic
ALTERNATOR										
BRAND		Masarelli/Lusy/Sorrel/Seribat	Masarelli/Lusy/Sorrel/Seribat	Masarelli/Lusy/Sorrel/Seribat	Masarelli/Lusy/Sorrel/Seribat	Masarelli/Lusy/Sorrel/Seribat	Masarelli/Lusy/Sorrel/Seribat	Masarelli/Lusy/Sorrel/Seribat	Masarelli/Lusy/Sorrel/Seribat	Masarelli/Lusy/Sorrel/Seribat
DIMENSIONS (OPEN SET)										
LXWXH	mm	5000x2250x2720	5000x2250x2720	5000x2250x2720	5450x2100x3080	5450x2100x3080	5130x2250x2800	5130x2250x2800	5130x2250x2800	5130x2250x2800
WEIGHT	kg	8500	8879	9500	10200	10365	10462	10462	10462	10462
FUEL TANK	lt	2060	2060	2060	2060	3000	3500	3500	3500	3500
DIMENSIONS (CANOPIED)										
LXWXH	mm	5800x2250x3480	5800x2250x3420	5800x2250x3420	5800x2250x3420	6500x2300x3130	9145x2470x3150	9145x2470x3150	9145x2470x3150	9145x2470x3150
WEIGHT	kg	9635	9896	10146	10765	16120	16542	16542	16542	16542
FUEL TANK	lt	2060	2060	2060	2060	3000	3500	3500	3500	3500



CUMMINS

DIESEL GENERATOR SETS



GJC SERIES
27 kVA - 2200 kVA

GJC SERIES

27,5 kVA - 2200 kVA



MODEL		GJC27	GJC40	GJC110	GJC150	GJC170	GJC220	GJC300	GJC330	GJC400
STAND BY	kVA	27	40	110	150	170	220	300	330	400
	kW	21,6	32	88	120	136	176	240	264	320
PRIME	kVA	25	35	100	136	155	200	275	300	365
	kW	20	28	80	108,8	124	160	220	240	292
RATED SPEED	r.p.m	1500	1500	1500	1500	1500	1500	1500	1500	1500
VOLTAGE	V	230/400	230/400	230/400	230/400	230/400	230/400	230/400	230/400	230/400
POWER FACTOR	Cos Phi	0,8	0,8	0,8	0,8	0,8	0,8	0,8	0,8	0,8
ENGINE										
BRAND		CUMMINS	CUMMINS	CUMMINS	CUMMINS	CUMMINS	CUMMINS	CUMMINS	CUMMINS	CUMMINS
MODEL		X2.5G2	X3.3G1	6BTAS.9G5	6BTA5.9G6	6BTA5.9G7	QSB7G5	6LTAAP.5G3	QSL9-G5	NTA855G4
ENGINE TYPE		4 Stroke - Diesel	4 Stroke - Diesel	4 Stroke - Diesel	4 Stroke - Diesel	4 Stroke - Diesel	4 Stroke - Diesel	4 Stroke - Diesel	4 Stroke - Diesel	4 Stroke - Diesel
INJECTION TYPE		Direct Injection	Direct Injection	Direct Injection	Direct Injection	Direct Injection	Direct Injection	Direct Injection	Direct Injection	Direct Injection
ASPIRATION TYPE		Naturally Aspirated	Naturally Aspirated	Turbo Charge	Turbo Charge & Aftercooler	Turbo Charge & Aftercooler	Turbo Charge & Aftercooler	Turbo Charge & Aftercooler	Turbo Charge	Turbo Charge
NUMBER OF CYLINDERS		3	3	6	6	6	6	6	6	6
CYLINDER BORE AND STROKE	mm	91,4x127	91,4x127	102x120	102x120	114x135	114x135	114x148	114x145	140x152
CYLINDER VOLUME	L	2,5	3,3	5,9	5,9	8,3	8,3	9,5	8,8	14
COOLING TYPE		Water Cooled	Water Cooled	Water Cooled	Water Cooled	Water Cooled	Water Cooled	Water Cooled	Water Cooled	Water Cooled
STAND BY LOAD FUEL CONSUMPTION	l/h	6,5	10,4	26,9	37,05	48	51	64	75	84
100% PRIME LOAD FUEL CONSUMPTION	l/h	6	8,5	24,2	35	42	45	56	63	76
75% PRIME LOAD FUEL CONSUMPTION	l/h	4,8	6,1	18,2	27	31	34	42	46	57
50% PRIME LOAD FUEL CONSUMPTION	l/h	3,5	4,3	12,5	18	21	23	29	31	39
TOTAL OIL CAPACITY	L	6,5	6,5	16,4	16,4	27,6	23,8	32,4	26,7	38,6
TOTAL COOLING CAPACITY	L	5,5	8,6	7,9	9,1	12,3	12,3	55,5	11	45
GOVERNOR TYPE	Type	Electronic	Electronic	Electronic	Electronic	Mechanical	Electronic	Electronic	Mechanical	Electronic
ALTERNATOR										
BRAND		Marelli/Lary/Sarni/Serlat	Marelli/Lary/Sarni/Serlat	Marelli/Lary/Sarni/Serlat	Marelli/Lary/Sarni/Serlat	Marelli/Lary/Sarni/Serlat	Marelli/Lary/Sarni/Serlat	Marelli/Lary/Sarni/Serlat	Marelli/Lary/Sarni/Serlat	Marelli/Lary/Sarni/Serlat
DIMENSIONS (OPEN SET)										
LXWXH	mm	1770x850x1440	1770x850x1440	2200x1000x1610	2460x1100x1740	2600x1100x1940	2600x1100x1940	2600x1250x1980	2980x1250x2100	3300x1600x2400
WEIGHT	kg	950	1160	1475	1868	1944	1975	2275	2496	4125
FUEL TANK	lt	135	135	220	310	360	360	550	590	810
DIMENSIONS (CANOPIED)										
LXWXH	mm	2225x950x1660	2225x950x1660	2750x1100x1860	2980x1100x2000	3500x1100x2240	3500x1100x2240	3500x1250x2280	3950x1250x2450	4640x1600x2750
WEIGHT	kg	1010	1220	1560	1938	2144	2285	2534	2880	4500
FUEL TANK	lt	135	135	300	310	360	360	550	590	810

GJC SERIES

27,5 kVA - 2200 kVA



MODEL		GJC440	GJC450	GJC550	GJC700	GJC880	GJC1100	GJC1375	GJC1500	GJC2200
STAND BY	kVA	440	450	550	700	880	1100	1375	1500	2200
	kW	352	360	440	560	704	880	1100	1200	1760
PRIME	kVA	400	410	500	636	800	1000	1250	1400	2000
	kW	320	328	400	508,8	640	800	1000	1120	1600
RATED SPEED	r.p.m	1500	1500	1500	1500	1500	1500	1500	1500	1500
VOLTAGE	V	230/400	230/400	230/400	230/400	230/400	230/400	230/400	230/400	230/400
POWER FACTOR	Cos Phi	0,8	0,8	0,8	0,8	0,8	0,8	0,8	0,8	0,8
ENGINE										
BRAND		CUMMINS	CUMMINS	CUMMINS	CUMMINS	CUMMINS	CUMMINS	CUMMINS	CUMMINS	CUMMINS
MODEL		QSK15G4	QSG12G2	QSK15G8	VTA28G5	QSK23G3	KTA38G5	KTA50G3	KTA50G8	QSKA0G4
ENGINE TYPE		4 Stroke - Diesel	4 Stroke - Diesel	4 Stroke - Diesel	4 Stroke - Diesel	4 Stroke - Diesel	4 Stroke - Diesel	4 Stroke - Diesel	4 Stroke - Diesel	4 Stroke - Diesel
INJECTION TYPE		Direct Injection	Direct Injection	Direct Injection	Direct Injection	Direct Injection	Direct Injection	Direct Injection	Direct Injection	Direct Injection
ASPIRATION TYPE		Turbo Charge	Turbo Charge	Turbo Charge & Aftercooler	Turbo Charge & Aftercooler	Turbo Charge & Aftercooler	Turbo Charge & Aftercooler	Turbo Charge & Aftercooler	Turbo Charge & Aftercooler	Turbo Charge & Aftercooler
NUMBER OF CYLINDERS		6	6	6	12	12	12	12	12	16
CYLINDER BORE AND STROKE	mm	137x169	132x144	159x159	139,7x152,4	159x159	159x159	159x159	159x159	159x190
CYLINDER VOLUME	L	15	11,8	19	28	38	38	37,7	38	60,2
COOLING TYPE		Water Cooled	Water Cooled	Water Cooled	Water Cooled	Water Cooled	Water Cooled	Water Cooled	Water Cooled	Water Cooled
STAND BY LOAD FUEL CONSUMPTION	l/h	94,1	92	227	154	345	228	301	345	437
100% PRIME LOAD FUEL CONSUMPTION	l/h	85,7	82	201	140	313	209	274	289	394
75% PRIME LOAD FUEL CONSUMPTION	l/h	67	68	154	104	240	161	206	222	291
50% PRIME LOAD FUEL CONSUMPTION	l/h	45,7	41	107	73	169	113	154	155	200
TOTAL OIL CAPACITY	L	91	34,1	50	83	135,1	140	170,3	177	280
TOTAL COOLING CAPACITY	L	42	48	112	126	112	218,5	106	496	490
GOVERNOR TYPE	Type	Electronic	Electronic	Electronic	Electronic	Electronic	Electronic	Electronic	Electronic	Electronic
ALTERNATOR										
BRAND		Marelli/Lary/Sarni/Serlat	Marelli/Lary/Sarni/Serlat	Marelli/Lary/Sarni/Serlat	Marelli/Lary/Sarni/Serlat	Marelli/Lary/Sarni/Serlat	Marelli/Lary/Sarni/Serlat	Marelli/Lary/Sarni/Serlat	Marelli/Lary/Sarni/Serlat	Marelli/Lary/Sarni/Serlat
DIMENSIONS (OPEN SET)										
LXWXH	mm	3300x1600x2400	3300x1600x2400	3600x1600x2400	3600x2100x2440	4600x2100x2320	5000x2250x2720	5000x2250x2720	5800x2250x3480	6500x2300x3130
WEIGHT	kg	4200	4275	4467	5650	6820	9768	10895	13.075	14786
FUEL TANK	lt	810	810	810	1410	1490	2060	2060	3000	3000
DIMENSIONS (CANOPIED)										
LXWXH	mm	4640x1600x2750	4640x1600x2750	4640x1600x2750	5000x2100x3150	5450x2100x3080	5800x2250x3480	5800x2250x3480	6500x2300x3130	Konveyör
WEIGHT	kg	4575	4800	4992	6200	7408	11275	12515	14700	16542
FUEL TANK	lt	810	810	810	1410	1490	2060	2060	3000	3000



RICARDO

DIESEL GENERATOR SETS



GJR SERIES
20 kVA - 400 kVA

MODEL		GJR20	GJR25	GJR40	GJR50	GJR55	GJR75	GJR90	GJR110	GJR125
STAND BY	kVA	20	25	40	50	55	75	90	110	125
	kW	16	20	32	40	44	60	72	88	100
PRIME	kVA	18	22,5	36	45	50	68	81	100	113
	kW	14,4	18	29	36	40	54,4	65	80	90,4
RATED SPEED	r.p.m	1500	1500	1500	1500	1500	1500	1500	1500	1500
VOLTAGE	V	230/400	230/400	230/400	230/400	230/400	230/400	230/400	230/400	230/400
POWER FACTOR	cos Phi	0,8	0,8	0,8	0,8	0,8	0,8	0,8	0,8	0,8
ENGINE										
RATED OUTPUT POWER	kW	17	22	30	42	42	56	66	84	110
BRAND		RICARDO	RICARDO	RICARDO	RICARDO	RICARDO	RICARDO	RICARDO	RICARDO	RICARDO
MODEL		R485	R490	R4100D	R4100ZD	R4105D	R4105ZD	R4105ZLD	R6105ZD	R6105ZLD
ENGINE TYPE		4 Stroke - Diesel	4 Stroke - Diesel	4 Stroke - Diesel	4 Stroke - Diesel	4 Stroke - Diesel	4 Stroke - Diesel	4 Stroke - Diesel	4 Stroke - Diesel	4 Stroke - Diesel
INJECTION TYPE		Direct Injection	Direct Injection	Direct Injection	Direct Injection	Direct Injection	Direct Injection	Direct Injection	Direct Injection	Direct Injection
ASPIRATION TYPE		Naturally Aspirated	Naturally Aspirated	Naturally Aspirated	Turbo Charge	Naturally Aspirated	Turbo Charge	Turbo Charge & Aftercooler	Turbo Charge & Aftercooler	Turbo Charge & Aftercooler
NUMBER OF CYLINDERS		4	4	4	4	4	4	4	6	6
CYLINDER BORE AND STROKE	mm	80x95	90x100	100x115	100x125	105x125	100x125	105x130	105x130	105x130
CYLINDER VOLUME	L	2,156	2,672	3,93	4,33	4,33	4,33	4,5	6,75	6,75
COOLING TYPE		Water Cooled	Water Cooled	Water Cooled	Water Cooled	Water Cooled	Water Cooled	Water Cooled	Water Cooled	Water Cooled
COMPRESSION RATE		18:1	18:1	18:1	18:1	18:1	18:1	18:1	18:1	18:1
STAND BY LOAD FUEL CONSUMPTION	l/h	5,8	7,5	8,69	10,978	11,957	16,302	19,558	22,561	22,561
100% PRIME LOAD FUEL CONSUMPTION	l/h	5,2	6,6	7,9	9,98	10,87	14,82	17,78	20,51	20,51
75% PRIME LOAD FUEL CONSUMPTION	l/h	3,9	5	5,93	7,41	8,15	11,11	13,34	15,38	15,38
50% PRIME LOAD FUEL CONSUMPTION	l/h	2,7	3,6	5,14	6,42	7,04	9,63	11,56	13,33	13,33
TOTAL OIL CAPACITY	L	8,5	9	13	13	10	13	13	18	18
TOTAL COOLING CAPACITY	L	16	20	52	16	16	16	18	25	25
GOVERNOR TYPE	Type	Mechanical	Mechanical	Mechanical	Mechanical	Mechanical	Mechanical	Mechanical	Mechanical	Mechanical
ALTERNATOR										
BRAND		Maranello	Maranello	Maranello	Maranello	Maranello	Maranello	Maranello	Maranello	Maranello
DIMENSIONS (OPEN SET)										
LXWXH	mm	1550x820x1080	1550x820x1080	1800x950x1400	1770x850x1440	1900x900x1610	1900x900x1610	2200x1000x1610	2460x1100x1740	2460x1100x1740
WEIGHT	kg	700	720	825	875	980	1055	1220	1400	1400
FUEL TANK	lt	70	70	135	135	220	220	300	310	310
DIMENSIONS (CANOPIED)										
LXWXH	mm	1900x920x1340	1900x920x1340	2225x950x1660	2225x950x1660	2440x1000x1860	2440x1000x1860	2750x1100x1860	2980x1100x2000	2980x1100x2000
WEIGHT	kg	780	800	1040	1120	1300	1360	1560	1715	1750
FUEL TANK	lt	70	70	135	135	220	220	300	310	310

MODEL		GJR150	GJR175	GJR220	GJR306	GJR330	GJR400
STAND BY	kVA	150	175	220	306	330	400
	kW	120	140	176	244,8	264	320
PRIME	kVA	135	160	200	275	300	350
	kW	108	128	160	220	240	280
RATED SPEED	r.p.m	1500	1500	1500	1500	1500	1500
VOLTAGE	V	230/400	230/400	230/400	230/400	230/400	230/400
POWER FACTOR	cos Phi	0,8	0,8	0,8	0,8	0,8	0,8
ENGINE							
RATED OUTPUT POWER	kW	121	132	175	235	235	317
BRAND		RICARDO	RICARDO	RICARDO	RICARDO	RICARDO	RICARDO
MODEL		R6105AZLD	R6105ZLD	R6113AZLD	6D100258A	6D100258A	6D120320A
ENGINE TYPE		4 Stroke - Diesel	4 Stroke - Diesel	4 Stroke - Diesel	4 Stroke - Diesel	4 Stroke - Diesel	4 Stroke - Diesel
INJECTION TYPE		Direct Injection	Direct Injection	Direct Injection	Direct Injection	Direct Injection	Direct Injection
ASPIRATION TYPE		Turbo Charge & Aftercooler	Turbo Charge & Aftercooler	Turbo Charge & Aftercooler	Turbo Charge & Aftercooler	Turbo Charge & Aftercooler	Turbo Charge & Aftercooler
NUMBER OF CYLINDERS		6	6	6	6	6	6
CYLINDER BORE AND STROKE	mm	105x130	105x130	113x125	105x130	126x130	105x130
CYLINDER VOLUME	L	6,75	7,01	7,52	7,52	9,7	9,7
COOLING TYPE		Water Cooled	Water Cooled	Water Cooled	Water Cooled	Water Cooled	Water Cooled
COMPRESSION RATE		18:1	18:1	18:1	18:1	18:1	18:1
STAND BY LOAD FUEL CONSUMPTION	l/h	22,561	33,836	29,26	59,884	64,581	71,44
100% PRIME LOAD FUEL CONSUMPTION	l/h	20,51	30,76	26,6	54,64	58,71	63,22
75% PRIME LOAD FUEL CONSUMPTION	l/h	15,38	23,07	30,76	40,83	44,03	50,58
50% PRIME LOAD FUEL CONSUMPTION	l/h	13,33	20,00	41,02	35,38	38,16	34,77
TOTAL OIL CAPACITY	L	18	18	18	19	19	18
TOTAL COOLING CAPACITY	L	25	25	35	50	50	25
GOVERNOR TYPE	Type	Mechanical	Mechanical	Electronic	Electronic	Electronic	Electronic
ALTERNATOR							
BRAND		Maranello	Maranello	Maranello	Maranello	Maranello	Maranello
DIMENSIONS (OPEN SET)							
LXWXH	mm	2300x1100x1840	2300x1100x1840	2600x1100x1940	2980x1250x2100	2980x1250x2100	2980x1250x2100
WEIGHT	kg	1670	1850	1875	2500	2600	3050
FUEL TANK	lt	320	320	360	590	590	590
DIMENSIONS (CANOPIED)							
LXWXH	mm	3200x1100x2100	3200x1100x2100	3500x1100x2240	3950x1250x2450	3950x1250x2450	3950x1250x2450
WEIGHT	kg	1920	1940	2100	3200	3200	3300
FUEL TANK	lt	320	320	360	590	590	590



FPT IVECO

DIESEL GENERATOR SETS

FPT IVECO
POWERTRAIN TECHNOLOGIES

GJI SERIES

33 kVA - 660 kVA



GJI SERIES

33 kVA - 660 kVA

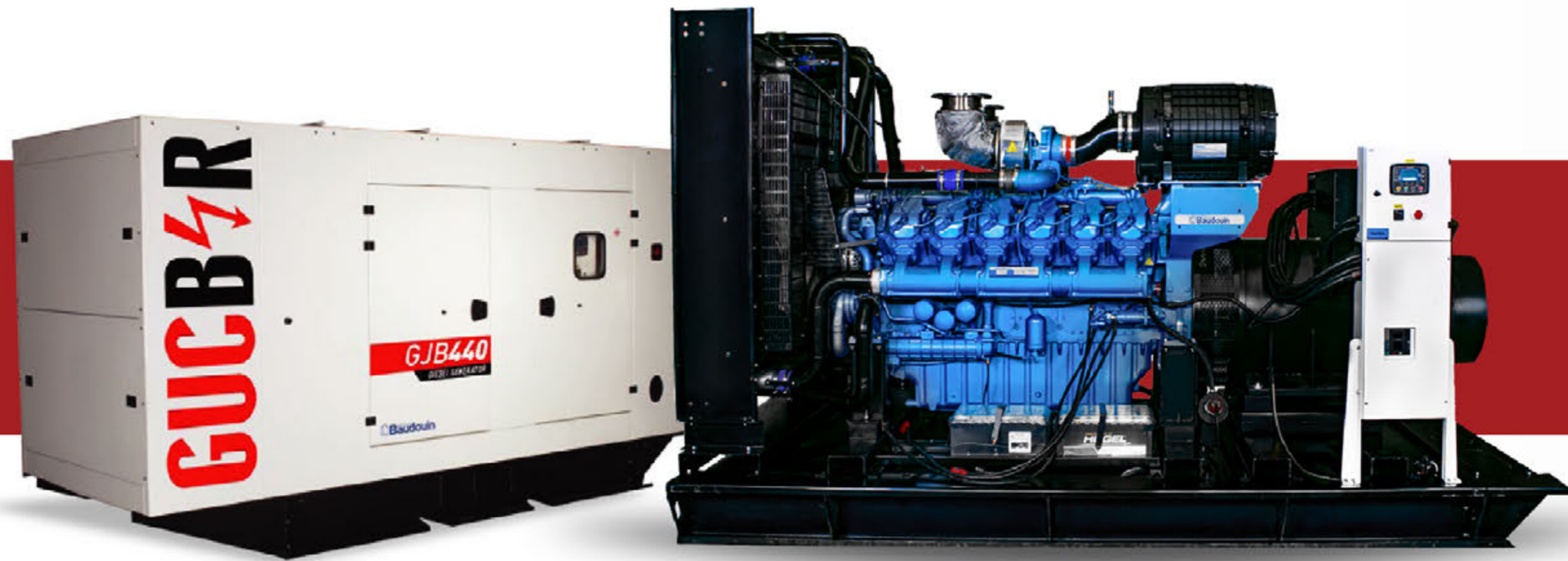
MODEL		GJI33	GJI50	GJI55	GJI66	GJI82	GJI88	GJI94	GJI110	GJI132
STAND BY	kVA	33	50	55	66	82	88	94	110	132
	kW	26,4	40	44	52,8	65,6	70,4	75,2	88	105,6
PRIME	kVA	30	45	50	60	74	80	85	100	120
	kW	24	36	40	48	59,2	64	68	80	96
RATED SPEED	r.p.m	1500	1500	1500	1500	1500	1500	1500	1500	1500
VOLTAGE	V	230/400	230/400	230/400	230/400	230/400	230/400	230/400	230/400	230/400
POWER FACTOR	cos Phi	0,8	0,8	0,8	0,8	0,8	0,8	0,8	0,8	0,8
ENGINE										
BRAND		FPT IVECO	FPT IVECO	FPT IVECO	FPT IVECO	FPT IVECO	FPT IVECO	FPT IVECO	FPT IVECO	FPT IVECO
MODEL		80313AM1P	NEF45AM1A	NEF45AM2	NEF45SM1A	NEF45SM3	NEF45SM2A	NEF45TM1A	NEF45TM2A	NEF45TM3
ENGINE TYPE		4 Stroke - Diesel		5 Stroke - Diesel		6 Stroke - Diesel		7 Stroke - Diesel		8 Stroke - Diesel
INJECTION TYPE		Direct Injection	Direct Injection	Direct Injection	Direct Injection	Direct Injection	Direct Injection	Direct Injection	Direct Injection	Direct Injection
ASPIRATION TYPE		Naturally Aspirated	Naturally Aspirated	Naturally Aspirated	Turbo Charge	Turbo Charge	Turbo Charge	Turbo Charge&Aftercooler/air	Turbo Charge&Aftercooler/air	Turbo Charge&Aftercooler/air
NUMBER OF CYLINDERS		3	4	4	4	4	4	4	4	4
CYLINDER BORE AND STROKE	mm	104x115	104x132	104x132	104x132	104x132	104x132	104x132	104x132	104x132
CYLINDER VOLUME	L	2,96	4,5	4,5	4,5	4,5	4,5	4,5	4,5	4,5
COOLING TYPE		Water Cooled	Water Cooled	Water Cooled	Water Cooled	Water Cooled	Water Cooled	Water Cooled	Water Cooled	Water Cooled
COMPRESSION RATE		17:01	17,5:1	17,5:1	17,5:1	17,5:1	17,5:1	17,5:1	17,5:1	17,5:1
STAND BY LOAD FUEL CONSUMPTION	l/h	6,9	12,5	14,6	15	21,2	19	21,4	24,4	9:36
100% PRIME LOAD FUEL CONSUMPTION	l/h	6	11,3	11,6	13,7	19,4	17,1	19,3	22	27,6
75% PRIME LOAD FUEL CONSUMPTION	l/h	4,8	9,2	9,8	10,2	15,4	12,7	14,4	16,2	21,6
50% PRIME LOAD FUEL CONSUMPTION	l/h	3,2	6,4	6,2	5,9	9,6	8,6	9,8	11	14,4
TOTAL OIL CAPACITY	L	8,8	12,8	12,8	12,8	12,8	12,8	12,8	12,8	12,8
TOTAL COOLING CAPACITY	L	18,5	18,5	18,5	18,5	18,5	18,5	18,5	18,5	18,5
GOVERNOR TYPE	Type	Mechanical	Mechanical	Mechanical	Mechanical	Mechanical	Mechanical	Mechanical	Mechanical	Mechanical
ALTERNATOR										
BRAND		Maranello / Leroy Somer	Maranello / Leroy Somer	Maranello / Leroy Somer	Maranello / Leroy Somer	Maranello / Leroy Somer	Maranello / Leroy Somer	Maranello / Leroy Somer	Maranello / Leroy Somer	Maranello / Leroy Somer
DIMENSIONS (OPEN SET)										
LXWXH	mm	1770x850x1440	1770x850x1440	1900x900x1610	1900x900x1610	2200x1000x1610	2200x1000x1610	2300x1100x1740	2300x1100x1740	2460x1100x1840
WEIGHT	kg	800	920	950	970	990	1070	1000	1120	1200
FUEL TANK	lt	135	135	220	220	300	300	300	300	310
DIMENSIONS (CANOPIED)										
LXWXH	mm	2225x950x1660	2225x950x1660	2440x1000x1860	2440x1000x1860	2750x1100x1860	2750x1100x1860	2980x1100x2000	2980x1100x2000	3200x1100x2100
WEIGHT	kg	1010	1220	2146	1370	1360	1410	1430	1466	1680
FUEL TANK	lt	135	135	220	220	300	300q	300	300	310



GJI SERIES

33 kVA - 660 kVA

MODEL		GJI135	GJI150	GJI185	GJI200	GJI220	GJI275	GJI330	GJI385	GJI440	GJI500	GJI550	GJI660
STAND BY	kVA	135	150	185	200	220	275	330	385	440	500	550	660
	kW	108	120	148	160	176	220	264	308	352	400	440	528
PRIME	kVA	125	135	165	180	200	250	300	350	400	450	500	600
	kW	100	108	132	144	160	200	240	280	320	360	400	480
RATED SPEED	r.p.m	1500	1500	1500	1500	1500	1500	1500	1500	1500	1500	1500	1500
VOLTAGE	V	230/400	230/400	230/400	230/400	230/400	230/400	230/400	230/400	230/400	230/400	230/400	230/400
POWER FACTOR	cos Phi	0,8	0,8	0,8	0,8	0,8	0,8	0,8	0,8	0,8	0,8	0,8	0,8
ENGINE													
BRAND		FPT IVECO	FPT IVECO	FPT IVECO	FPT IVECO	FPT IVECO	FPT IVECO	FPT IVECO	FPT IVECO	FPT IVECO	FPT IVECO	FPT IVECO	FPT IVECO
MODEL		NEF67SM1	NEF67TM2A	NEF67TM3A	NEF67TM4	NEF67TM7	NEF67TE8W	CURS0R87TE4	CURS0R13TE2A	CURS0R13TE3A	CURS0R13TE8W	CURS0R13TE7W	CURS0R16TE1W
ENGINE TYPE		9 Stroke - Diesel			10 Stroke - Diesel		11 Stroke - Diesel	12 Stroke - Diesel			13 Stroke - Diesel	14 Stroke - Diesel	
INJECTION TYPE		Direct Injection	Direct Injection	Direct Injection	Direct Injection	Direct Injection	Common Rail	Common Rail	Direk E.U.I	Direk E.U.I	Direk E.U.I	ElectricCommonRail	Direk E.U.I
ASPIRATION TYPE		Turbo Charge		Turbo Charge&Aftercooler/air	Turbo Charge&Aftercooler/air	Turbo Charge&Aftercooler/air	Turbo Charge&Aftercooler/air	Turbo Charge&Aftercooler/air	Turbo Charge&Aftercooler/air	Turbo Charge&Aftercooler/air	Turbo Charge&Aftercooler/air	Turbo Charge&Aftercooler/air	Turbo Charge&Aftercooler/air
NUMBER OF CYLINDERS		6	6	6	6	6	6	6	6	6	6	6	6
CYLINDER BORE AND STROKE	mm	104x132	104x132	104x132	104x132	104x132	104x132	117x135	135x150	135x150	141x170	135x150	141x170
CYLINDER VOLUME	L	6,7	6,7	6,7	6,7	6,7	6,7	8,7	12,8	12,88	15,9	12,88	15,9
COOLING TYPE		Water Cooled	Water Cooled	Water Cooled	Water Cooled	Water Cooled	Water Cooled	Water Cooled	Water Cooled	Water Cooled	Water Cooled	Water Cooled	Water Cooled
COMPRESSION RATE		17,5 : 1	17,5 : 1	17,5 : 1	17,5 : 1	17,5 : 1	17:01	15,9 : 1	16,5 : 1	16,5 : 1	14:06	16,5:1	16,5:1
STAND BY LOAD FUEL CONSUMPTION	l/h	32	32	39	42,2	49,4	59,2	72,4	77,9	100,5	132	112,6	132
100% PRIME LOAD FUEL CONSUMPTION	l/h	29,3	29,3	36	36,6	45,8	51,5	66,6	70	85,8	115	100,6	115
75% PRIME LOAD FUEL CONSUMPTION	l/h	24,1	24,1	29	29,4	34,7	41,2	52,6	57,3	70,4	85	80,2	85
50% PRIME LOAD FUEL CONSUMPTION	l/h	15,8	15,8	18	18	23,1	26,2	37,3	38,8	42,8	54	51,5	57
TOTAL OIL CAPACITY	L	17,2	17,2	17,2	17,2	17,2	17,2	28	35	35	32	32	75
TOTAL COOLING CAPACITY	L	25,5	25,5	25,5	25,5	52	25,5	58	67	68	52,5	38,1	52,5
GOVERNOR TYPE	Type	Mechanical	Mechanical	Mechanical	Mechanical	Electronic	ECU	ECU	ECU	ECU	ECU	ECU	ECU
ALTERNATOR													
BRAND		Maranello/LeroySomer	Maranello/LeroySomer	Maranello/LeroySomer	Maranello/LeroySomer	Maranello/LeroySomer	Maranello/LeroySomer	Maranello/LeroySomer	Maranello/LeroySomer	Maranello/LeroySomer	Maranello/LeroySomer	Maranello/LeroySomer	Maranello/LeroySomer
DIMENSIONS (OPEN SET)													
LXWXH	mm	2460x1100x1840	2460x1100x1840	2460x1100x1840	2600x1100x1940	2600x1100x1940	2600x1250x1980	2980x1250x2100	3300x1250x2400	3300x1250x2400	3300x1250x2400	3300x1250x2400	3600x2100x2440
WEIGHT	kg	1230	1470	1500	1530	1610	1800	2250	3240	3430	3650	3770	3980
FUEL TANK	lt	310	310	360	360	360	550	590	810	810	810	810	1410
DIMENSIONS (CANOPIED)													
LXWXH	mm	3200x1100x2100	3200x1100x2100	3200x1100x2100	3500x1100x2240	3500x1100x2240	3500x1250x2280	3950x1250x2450	4640x1600x2750	4640x1600x2750	4640x1600x2750	4640x1600x2750	5000x2100x3050
WEIGHT	kg	1700	1800	1940	2000	2050	2350	3060	4000	4150	4555	4610	5000
FUEL TANK	lt	310	310	360	360	360	550	590	810	810	810	810	1410



BAUDOUIN

DIESEL GENERATOR SETS

MOTEURS
Baudouin

GJB SERIES

20 kVA - 2750 kVA

GJB SERIES

17 kVA - 1900 kVA

MODEL		GJB20	GJB25	GJB35	GJB44	GJB50	GJB55	GJB72	GJB88	GJB110
STAND BY	kVA	20	25	35	44	50	55	72	88	110
	kW	16	20	28	35,2	40	44	57,6	70,4	88
PRIME	kVA	18	23	32	40	45	50	65	80	100
	kW	14,4	18,4	25,6	32	36	40	52	64	80
RATED SPEED	r.p.m	1500	1500	1500	1500	1500	1500	1500	1500	1500
VOLTAGE	V	230/400	230/400	230/400	230/400	230/400	230/400	230/400	230/400	230/400
POWER FACTOR	cos Phi	0,8	0,8	0,8	0,8	0,8	0,8	0,8	0,8	0,8
ENGINE										
BRAND		BAUDOQUIN	BAUDOQUIN	BAUDOQUIN	BAUDOQUIN	BAUDOQUIN	BAUDOQUIN	BAUDOQUIN	BAUDOQUIN	BAUDOQUIN
MODEL		4M06G20/5	4M06G25/5	4M06G35/5	4M06G44/5	4M06G50/5	4M06G55/5	4M10G70/5	4M10G88/5	4M10G110/5
ENGINE TYPE		4 Stroke - Diesel	4 Stroke - Diesel	4 Stroke - Diesel	4 Stroke - Diesel	4 Stroke - Diesel	4 Stroke - Diesel	4 Stroke - Diesel	4 Stroke - Diesel	4 Stroke - Diesel
INJECTION TYPE		Direct Injection	Direct Injection	Direct Injection	Direct Injection	Direct Injection	Direct Injection	Direct Injection	Direct Injection	Direct Injection
ASPIRATION TYPE		Naturally Aspirated	Naturally Aspirated	Naturally Aspirated	Turbo Charge	Naturally Aspirated	Turbo Charge	Turbo Charge & Aftercooler	Turbo Charge & Aftercooler	Turbo Charge & Aftercooler
NUMBER OF CYLINDERS		4	4	4	4	4	4	4	6	6
CYLINDER BORE AND STROKE	mm	89x92	89x92	89x92	89x92	89x92	89x92	105x130	105x130	105x130
CYLINDER VOLUME	L	2,3	2,6	2,3	2,3	2,3	2,3	4,5	4,5	4,5
COOLING TYPE		Water Cooled	Water Cooled	Water Cooled	Water Cooled	Water Cooled	Water Cooled	Water Cooled	Water Cooled	Water Cooled
COMPRESSION RATE		17:05	17:05	17:05	17:05	17:05	17:05	18:1	18:1	18:1
STAND BY LOAD FUEL CONSUMPTION	l/h	5,2	7,1	8,4	10,8	11,7	13,3	16,1	20,6	26
100% PRIME LOAD FUEL CONSUMPTION	l/h	4,7	6,1	7,6	9,5	10,7	11,9	14,6	18,6	23,2
75% PRIME LOAD FUEL CONSUMPTION	l/h	3,6	4,5	5,7	7	8	8,9	11	13,7	17,4
50% PRIME LOAD FUEL CONSUMPTION	l/h	2,6	3,2	4	4,7	5,4	6	7,8	9,5	11,9
TOTAL OIL CAPACITY	L	11,5	11,5	11,5	11,5	11,5	9,2	13	13	13
TOTAL COOLING CAPACITY	L	16	16	16	16	16	12,9	19	19	13,3
GOVERNOR TYPE	Type	Electronic	Electronic	Electronic	Electronic	Electronic	Electronic	Electronic	Electronic	Electronic
ALTERNATOR										
BRAND		Masorella/Lang Sarras/Sarrasid	Masorella/Lang Sarras/Sarrasid	Masorella/Lang Sarras/Sarrasid	Masorella/Lang Sarras/Sarrasid	Masorella/Lang Sarras/Sarrasid	Masorella/Lang Sarras/Sarrasid	Masorella/Lang Sarras/Sarrasid	Masorella/Lang Sarras/Sarrasid	Masorella/Lang Sarras/Sarrasid
DIMENSIONS (OPEN SET)										
LXWXH	mm	1550x820x1080	1550x820x1080	1770x850x1440	1770x850x1440	1770x850x1440	1900x900x1610	1900x900x1610	2200x1000x1610	2200x1000x1610
WEIGHT	kg	600	650	792	810	850	900	950	1010	1150
FUEL TANK	lt	70	70	135	135	135	220	220	300	300
DIMENSIONS (CANOPIED)										
LXWXH	mm	1900x920x1340	1900x920x1180	2225x950x1660	2225x950x1640	2225x950x1660	2440x1000x1860	2440x1000x1860	2750x1100x1860	2980x1100x2000
WEIGHT	kg	700	770	932	1040	1220	1300	1360	1410	1570
FUEL TANK	lt	70	70	135	135	135	220	220	300	300

GJB SERIES

17 kVA - 1900 kVA

MODEL		GJB150	GJB165	GJB220	GJB250	GJB275	GJB300	GJB350	GJB400	GJB440
STAND BY	kVA	150	165	220	250	275	300	350	400	440
	kW	120	132	176	200	220	240	280	320	352
PRIME	kVA	135	150	200	230	250	270	320	360	400
	kW	108	120	160	184	200	216	256	288	320
RATED SPEED	r.p.m	1500	1500	1500	1500	1500	1500	1500	1500	1500
VOLTAGE	V	230/400	230/400	230/400	230/400	230/400	230/400	230/400	230/400	230/400
POWER FACTOR	cos Phi	0,8	0,8	0,8	0,8	0,8	0,8	0,8	0,8	0,8
ENGINE										
BRAND		BAUDOQUIN	BAUDOQUIN	BAUDOQUIN	BAUDOQUIN	BAUDOQUIN	BAUDOQUIN	BAUDOQUIN	BAUDOQUIN	BAUDOQUIN
MODEL		6M11G150/5	6M11G165/5	6M16G220/5	6M16G250/5	6M16G275/5	6M16G300/5	6M16G350/5	6M21G400/5	6M21G440/5
ENGINE TYPE		4 Stroke - Diesel	4 Stroke - Diesel	4 Stroke - Diesel	4 Stroke - Diesel	4 Stroke - Diesel	4 Stroke - Diesel	4 Stroke - Diesel	4 Stroke - Diesel	4 Stroke - Diesel
INJECTION TYPE		Direct Injection	Direct Injection	Direct Injection	Direct Injection	Direct Injection	Direct Injection	Direct Injection	Direct Injection	Direct Injection
ASPIRATION TYPE		Turbo Charge & Aftercooler	Turbo Charge & Aftercooler	Turbo Charge & Aftercooler	Turbo Charge & Aftercooler	Turbo Charge & Aftercooler	Turbo Charge & Aftercooler	Turbo Charge & Aftercooler	Turbo Charge & Aftercooler	Turbo Charge & Aftercooler
NUMBER OF CYLINDERS		6	6	6	6	6	6	6	6	6
CYLINDER BORE AND STROKE	mm	105x130	105x130	126x130	126x130	126x130	126x130	126x130	126x130	127x165
CYLINDER VOLUME	L	6,75	6,75	9,72	9,72	9,72	9,7	9,7	9,7	12,54
COOLING TYPE		Water Cooled	Water Cooled	Water Cooled	Water Cooled	Water Cooled	Water Cooled	Water Cooled	Water Cooled	Water Cooled
COMPRESSION RATE		18:1	18:1	17:01	17:01	17:01	17:01	17:01	16:01	16:01
STAND BY LOAD FUEL CONSUMPTION	l/h	33,1	36,1	46,9	56,4	63,6	65,7	78,6	N/A	94,8
100% PRIME LOAD FUEL CONSUMPTION	l/h	30,2	32,6	43,1	50,9	56,9	58,8	70,5	82	85,5
75% PRIME LOAD FUEL CONSUMPTION	l/h	23	24,6	32,4	38	42,2	45,2	52,3	61	63,5
50% PRIME LOAD FUEL CONSUMPTION	l/h	15,9	16,7	22,4	25,8	28,3	32,6	35,4	41	43,2
TOTAL OIL CAPACITY	L	19	19	30	30	30	22	30	30	32
TOTAL COOLING CAPACITY	L	17	17	44	44	44	44	50	55	55
GOVERNOR TYPE	Type	Electronic	Electronic	Electronic	Electronic	Electronic	Electronic	Electronic	Electronic	Electronic
ALTERNATOR										
BRAND		Masorella/Lang Sarras/Sarrasid	Masorella/Lang Sarras/Sarrasid	Masorella/Lang Sarras/Sarrasid	Masorella/Lang Sarras/Sarrasid	Masorella/Lang Sarras/Sarrasid	Masorella/Lang Sarras/Sarrasid	Masorella/Lang Sarras/Sarrasid	Masorella/Lang Sarras/Sarrasid	Masorella/Lang Sarras/Sarrasid
DIMENSIONS (OPEN SET)										
LXWXH	mm	2460x1100x1740	2300x1100x1840	2600x1100x1940	2600x1250x1980	2600x1250x1980	2980x1250x2100	2980x1250x2100	3300x1600x2400	3300x1600x2400
WEIGHT	kg	1500	1600	1760	1950	2350	2500	2650	3250	3500
FUEL TANK	lt	310	320	360	550	550	590	590	810	810
DIMENSIONS (CANOPIED)										
LXWXH	mm	2980x1100x2000	3200x1100x2100	3500x1100x2240	3500x1250x2280	3500x1250x2280	3950x1250x2450	3950x1250x2450	4640x1600x2750	4640x1600x2750
WEIGHT	kg	1860	2010	2100	2250	2534	2800	3000	4500	4800
FUEL TANK	lt	310	320	360	550	550	590	590	810	810

GJB SERIES

17 kVA - 1900 kVA

MODEL		GJB550	GJB550	GJB660	GJB715	GJB750	GJB825	GJB900	GJB1000	GJB1100
STAND BY	kVA	550	550	660	715	750	825	900	1000	1100
	kW	440	440	528	572	600	660	720	800	880
PRIME	kVA	500	500	600	650	680	750	800	900	1020
	kW	400	400	480	520	544	600	640	720	816
RATED SPEED	r.p.m	1500	1500	1500	1500	1500	1500	1500	1500	1500
VOLTAGE	V	230/400	230/400	230/400	230/400	230/400	230/400	230/400	230/400	230/400
POWER FACTOR	cos Phi	0,8	0,8	0,8	0,8	0,8	0,8	0,8	0,8	0,8
ENGINE										
BRAND		BAUDOQUIN	BAUDOQUIN	BAUDOQUIN	BAUDOQUIN	BAUDOQUIN	BAUDOQUIN	BAUDOQUIN	BAUDOQUIN	BAUDOQUIN
MODEL		6M210550/5	6M210550/5	8M210660/5	6M330715/5	6M330750/5	6M330825/5	12M260900/5	12M2661000/5	12M2661100/5
ENGINE TYPE		4 Stroke - Diesel	4 Stroke - Diesel	4 Stroke - Diesel	4 Stroke - Diesel	4 Stroke - Diesel	4 Stroke - Diesel	4 Stroke - Diesel	4 Stroke - Diesel	4 Stroke - Diesel
INJECTION TYPE		Direct Injection	Direct Injection	Direct Injection	Direct Injection	Direct Injection	Direct Injection	Direct Injection	Direct Injection	Direct Injection
ASPIRATION TYPE		Turbo Charge & Aftercooler	Turbo Charge & Aftercooler	Turbo Charge & Aftercooler	Turbo Charge & Aftercooler	Turbo Charge & Aftercooler	Turbo Charge & Aftercooler	Turbo Charge & Aftercooler	Turbo Charge & Aftercooler	Turbo Charge & Aftercooler
NUMBER OF CYLINDERS		6	6	6	6	6	6	12	12	12
CYLINDER BORE AND STROKE	mm	150x150	150x150	150x185	150x185	150x185	150x185	150x150	150x150	150x150
CYLINDER VOLUME	L	15,9	15,9	19,6	19,6	19,6	19,6	31,8	31,8	31,8
COOLING TYPE		Water Cooled	Water Cooled	Water Cooled	Water Cooled	Water Cooled	Water Cooled	Water Cooled	Water Cooled	Water Cooled
COMPRESSION RATE		15:01	15:01	15:01	15:01	15:01	15:01	15:07	15:07	15:07
STAND BY LOAD FUEL CONSUMPTION	l/h	105,7	105,7	139,3	153,3	185	187	190,8	218,9	228,1
100% PRIME LOAD FUEL CONSUMPTION	l/h	95,1	95,1	126,5	136,3	171	182	173,7	195,5	207,1
75% PRIME LOAD FUEL CONSUMPTION	l/h	71,4	71,4	94,1	100	128	137	133,1	144,5	155,3
50% PRIME LOAD FUEL CONSUMPTION	l/h	49,9	49,9	63,6	67,1	86	91	90,8	100,8	106,6
TOTAL OIL CAPACITY	L	55	55	64	64	64	64	114	114	114
TOTAL COOLING CAPACITY	L	101,7	101,7	129	129	159	159	191	191	191
GOVERNOR TYPE	Type	Electronic	Electronic	Electronic	Electronic	Electronic	Electronic	Electronic	Electronic	Electronic
ALTERNATOR										
BRAND		Masrello/Lany/Sorrel/Serlat	Masrello/Lany/Sorrel/Serlat	Masrello/Lany/Sorrel/Serlat	Masrello/Lany/Sorrel/Serlat	Masrello/Lany/Sorrel/Serlat	Masrello/Lany/Sorrel/Serlat	Masrello/Lany/Sorrel/Serlat	Masrello/Lany/Sorrel/Serlat	Masrello/Lany/Sorrel/Serlat
DIMENSIONS (OPEN SET)										
LXWXH	mm	3600x1600x2400	3600x1600x2400	3600x2100x2440	3600x2100x2440	3600x2100x2440	4600x2100x2570	4600x2100x2570	5000x2250x2720	5000x2250x2720
WEIGHT	kg	4080	4080	4200	4300	4500	5200	5500	7260	9608
FUEL TANK	lt	810	810	1410	1410	1410	1490	1490	2060	2060
DIMENSIONS (CANOPIED)										
LXWXH	mm	4640x1600x2750	4640x1600x2750	5000x2100x3150	5000x2100x3150	5200x1900x3110	5450x2100x3330	5450x2100x3330	5800x2250x3480	5800x2250x3480
WEIGHT	kg	4992	4992	5250	6200	6500	6720	7175	9000	11358
FUEL TANK	lt	810	810	1410	1410	1410	1490	1490	2060	2060

GJB SERIES

17 kVA - 1900 kVA

MODEL		GJB1250	GJB1400	GJB1500	GJB1650	GJB1900	GJB2000	GJB2250	GJB2500	GJB2750
STAND BY	kVA	1250	1400	1500	1650	1900	2000	2250	2500	2750
	kW	1000	1120	1200	1320	1520	1600	1800	2000	2200
PRIME	kVA	1150	1250	1375	1500	1750	1830	2050	2250	2500
	kW	920	1000	1100	1200	1400	1464	1640	1800	2000
RATED SPEED	r.p.m	1500	1500	1500	1500	1500	1500	1500	1500	1500
VOLTAGE	V	230/400	230/400	230/400	230/400	230/400	230/400	230/400	230/400	230/400
POWER FACTOR	cos Phi	0,8	0,8	0,8	0,8	0,8	0,8	0,8	0,8	0,8
ENGINE										
BRAND		BAUDOQUIN	BAUDOQUIN	BAUDOQUIN	BAUDOQUIN	BAUDOQUIN	BAUDOQUIN	BAUDOQUIN	BAUDOQUIN	BAUDOQUIN
MODEL		12M3301250/5	12M3301400/5	12M3301500/5	12M3301650/5	16M3301900/5	16M3302000/5	16M3302250/5*	20M3302500/5*	12M5502750/5
ENGINE TYPE		4 Stroke - Diesel	4 Stroke - Diesel	4 Stroke - Diesel	4 Stroke - Diesel	4 Stroke - Diesel	4 Stroke - Diesel	4 Stroke - Diesel	4 Stroke - Diesel	4 Stroke - Diesel
INJECTION TYPE		Direct Injection	Direct Injection	Direct Injection	Direct Injection	Direct Injection	Direct Injection	Direct Injection	Direct Injection	Direct Injection
ASPIRATION TYPE		Turbo Charge & Aftercooler	Turbo Charge & Aftercooler	Turbo Charge & Aftercooler	Turbo Charge & Aftercooler	Turbo Charge & Aftercooler	Turbo Charge & Aftercooler	Turbo Charge & Aftercooler	Turbo Charge & Aftercooler	Turbo Charge & Aftercooler
NUMBER OF CYLINDERS		12	12	12	16	16	16	12	12	12
CYLINDER BORE AND STROKE	mm	150x185	150x185	150x185	150x185	150x185	150x185	180x215	180x215	180x215
CYLINDER VOLUME	L	31,8	39,2	39,2	39,2	52,3	52,3	65,6	65,6	65,6
COOLING TYPE		Water Cooled	Water Cooled	Water Cooled	Water Cooled	Water Cooled	Water Cooled	Water Cooled	Water Cooled	Water Cooled
COMPRESSION RATE		15:01	15:01	15:01	15:01	15:01	15:01	16:05	16:05	16:05
STAND BY LOAD FUEL CONSUMPTION	l/h	262,6	288,8	342	342	407,6	440	445,1	494,1	560
100% PRIME LOAD FUEL CONSUMPTION	l/h	236,2	258,6	331	331	364,3	378,4	407,2	437,2	N/A
75% PRIME LOAD FUEL CONSUMPTION	l/h	175	190,7	250	250	265,4	283,2	309,5	330,5	N/A
50% PRIME LOAD FUEL CONSUMPTION	l/h	119,5	129,2	167	167	179,7	195	217,5	231,9	N/A
TOTAL OIL CAPACITY	L	160	160	160	168	175	175	560	560	560
TOTAL COOLING CAPACITY	L	240	240	323	303	400	400	306	306	306
GOVERNOR TYPE	Type	Electronic	Electronic	Electronic	Electronic	Electronic	Electronic	Electronic	Electronic	Electronic
ALTERNATOR										
BRAND		Masrello/Lany/Sorrel/Serlat	Masrello/Lany/Sorrel/Serlat	Masrello/Lany/Sorrel/Serlat	Masrello/Lany/Sorrel/Serlat	Masrello/Lany/Sorrel/Serlat	Masrello/Lany/Sorrel/Serlat	Masrello/Lany/Sorrel/Serlat	Masrello/Lany/Sorrel/Serlat	Masrello/Lany/Sorrel/Serlat
DIMENSIONS (OPEN SET)										
LXWXH	mm	5000x2250x2720	5000x2250x2720	5500x2350x2700	5500x2350x2700	6500x2430x2700	6500x2430x2700	6500x2430x2700	6500x2430x2700	6500x2430x2700
WEIGHT	kg	10168	11250	9802	9922	12145	12145	16300	16300	16300
FUEL TANK	lt	2060	2060	3000	3000	3000	3000	3400	3400	3400
DIMENSIONS (CANOPIED)										
LXWXH	mm	5800x2250x3480	5800x2250x3480	8000x2400x3530	8000x2400x3530	8000x2400x3530	8000x2400x3530	12000x2350x2700	12000x2350x2700	12000x2350x2700
WEIGHT	kg	11500	12340	15500	16120	20409	20409	20900	20900	20900
FUEL TANK	lt	2060	2060	3000	3000	3000	3000	3400	3400	3400



XENIC

DIESEL GENERATOR SETS

XENIC
DIESEL

GJW-X SERIES
250 kVA - 2350 kVA

MODEL		GJW250X	GJW300X	GJW350X	GJW440X	GJW520X	GJW550X	GJW580X	GJW630X	GJW700X	GJW750X
STAND BY	kVA	250	300	350	440	520	550	580	630	700	750
	kW	200	240	280	352	416	440	444	504	560	600
PRIME	kVA	225	270	315	400	470	500	525	570	630	680
	kW	180	216	252	320	376	400	420	456	504	544
RATED SPEED	r.p.m	1500	1500	1500	1500	1500	1500	1500	1500	1500	1500
VOLTAGE	V	230/400	230/400	230/400	230/400	230/400	230/400	230/400	230/400	230/400	230/400
POWER FACTOR	cos Phi	0,8	0,8	0,8	0,8	0,8	0,8	0,8	0,8	0,8	0,8
ENGINE											
RATED OUTPUT POWER	kW	206	263	310	370	510	510	510	550	610	660
BRAND		XENIC	XENIC	XENIC	XENIC	XENIC	XENIC	XENIC	XENIC	XENIC	XENIC
MODEL		TAD830GE	TAD831GE	TAD1332GE	TAD1333GE	TAD1534GE	TAD1534GE	TAD2636GE	TAD2637GE	TAD2638GE	TAD2839GE
ENGINE TYPE		4 Stroke - Diesel	4 Stroke - Diesel	4 Stroke - Diesel	4 Stroke - Diesel	4 Stroke - Diesel	4 Stroke - Diesel	4 Stroke - Diesel	4 Stroke - Diesel	4 Stroke - Diesel	4 Stroke - Diesel
INJECTION TYPE		Direct Injection	Direct Injection	Direct Injection	Direct Injection	Direct Injection	Direct Injection	Direct Injection	Direct Injection	Direct Injection	Direct Injection
ASPIRATION TYPE		Turbo Charge	Turbo Charge	Turbo Charge	Turbo Charge	Turbo Charge	Turbo Charge	Turbo Charge & Intercooler	Turbo Charge & Intercooler	Turbo Charge & Intercooler	Turbo Charge & Intercooler
NUMBER OF CYLINDERS		6	6	6	6	6	6	12	12	12	12
CYLINDER BORE AND STROKE	mm	114x135	114x144	135x150	135x150	135x165	135x165	135x150	135x150	135x155	135x155
CYLINDER VOLUME	L	8,27	8,82	12,88	12,88	12,88	12,88	24,9	24,9	26,62	26,6
COOLING TYPE		Water Cooled	Water Cooled	Water Cooled	Water Cooled	Water Cooled	Water Cooled	Water Cooled	Water Cooled	Water Cooled	Water Cooled
STAND BY LOAD FUEL CONSUMPTION	l/h	48,9	58,7	68,42	83,7	94,49	108,7	114,07	127,9	136,9	163
100% PRIME LOAD FUEL CONSUMPTION	l/h	44,5	53,3	62,2	76,1	85,9	98,8	103,7	118,3	124,5	148,2
75% PRIME LOAD FUEL CONSUMPTION	l/h	35,6	42,7	49,8	60,9	68,8	79	83	89,7	99,6	118,5
50% PRIME LOAD FUEL CONSUMPTION	l/h	26,7	32	37,3	45,6	51,6	59,3	62,2	70,8	74,7	88,9
TOTAL OIL CAPACITY	L	22	22	35	35	36	38	53	53	53	55
TOTAL COOLING CAPACITY	L	90	92	120	125	125	140	180	180	180	190
GOVERNOR TYPE	Type	Electronic	Electronic	Electronic	Electronic	Electronic	Electronic	Electronic	Electronic	Electronic	Electronic
ALTERNATOR											
BRAND		Maranello	Maranello	Maranello	Maranello	Maranello	Maranello	Maranello	Maranello	Maranello	Maranello
DIMENSIONS (OPEN SET)											
LXWXH	mm	2400x1250x1980	2600x1250x1980	3300x1600x2400	3300x1600x2400	3300x1600x2400	3300x1600x2400	3600x2100x2440	3600x2100x2440	3600x2100x2440	3600x2100x2440
WEIGHT	kg	2040	2210	3610	3900	3975	4268	5050	6200	6445	7030
FUEL TANK	lt	550	550	810	810	810	810	1410	1410	1410	1410
DIMENSIONS (CANOPIED)											
LXWXH	mm	3500x1250x2280	3500x1250x2280	4640x1600x2750	4640x1600x2750	4640x1600x2750	4640x1600x2750	5000x2100x3050	5000x2100x3050	5000x2100x3050	5000x2100x3050
WEIGHT	kg	2350	2500	3900	4200	4275	4568	5350	6500	6745	7328
FUEL TANK	lt	550	550	810	810	810	810	1410	1410	1410	1410

MODEL		GJW900X	GJW1000X	GJW1100X	GJW1250X	GJW1385X
STAND BY	kVA	900	1000	1100	1250	1385
	kW	720	800	880	1000	1108
PRIME	kVA	818	900	1000	1135	1250
	kW	654,4	720	800	908	1000
RATED SPEED	r.p.m	1500	1500	1500	1500	1500
VOLTAGE	V	230/400	230/400	230/400	230/400	230/400
POWER FACTOR	cos Phi	0,8	0,8	0,8	0,8	0,8
ENGINE						
RATED OUTPUT POWER	kW	780	936	960	1073	1180
BRAND		XENIC	XENIC	XENIC	XENIC	XENIC
MODEL		TAD2840GE	TAD2841GE	TAD3342GE	TAD3343GE	TAD3344GE
ENGINE TYPE		4 Stroke - Diesel	4 Stroke - Diesel	4 Stroke - Diesel	4 Stroke - Diesel	4 Stroke - Diesel
INJECTION TYPE		Direct Injection	Direct Injection	Direct Injection	Direct Injection	Direct Injection
ASPIRATION TYPE		Turbo Charge & Intercooler	Turbo Charge & Intercooler	Turbo Charge & Intercooler	Turbo Charge & Intercooler	Turbo Charge & Intercooler
NUMBER OF CYLINDERS		12	12	12	12	12
CYLINDER BORE AND STROKE	mm	135x155	138x168	138x168	138x168	138x168
CYLINDER VOLUME	L	26,6	30,15	30,15	30,15	30,15
COOLING TYPE		Water Cooled	Water Cooled	Water Cooled	Water Cooled	Water Cooled
STAND BY LOAD FUEL CONSUMPTION	l/h	177,1	186,9	217,36	267,8	297,5
100% PRIME LOAD FUEL CONSUMPTION	l/h	161	169,9	197,6	243,4	270,5
75% PRIME LOAD FUEL CONSUMPTION	l/h	128,8	135,9	158,1	194,7	216,4
50% PRIME LOAD FUEL CONSUMPTION	l/h	96,6	101,9	118,5	146,1	162,3
TOTAL OIL CAPACITY	L	55	55	61	61	61
TOTAL COOLING CAPACITY	L	190	190	190	192	202
GOVERNOR TYPE	Type	Electronic	Electronic	Electronic	Electronic	Electronic
ALTERNATOR						
BRAND		Maranello	Maranello	Maranello	Maranello	Maranello
DIMENSIONS (OPEN SET)						
LXWXH	mm	4600x2100x2570	4450x2250x2720	4450x2250x2720	4450x2250x2720	4450x2250x2720
WEIGHT	kg	7895	N/A	N/A	N/A	N/A
FUEL TANK	lt	1490	2030	2030	2030	2030
DIMENSIONS (CANOPIED)						
LXWXH	mm	5450x2100x3170	5800x2250x3330	5800x2250x3330	5800x2250x3330	5800x2250x3330
WEIGHT	kg	8297	N/A	N/A	N/A	N/A
FUEL TANK	lt	1490	2030	2030	2030	2030



LISTER PETER

DIESEL GENERATOR SETS



GJL SERIES

18 kVA - 908 kVA



GJL SERIES

18 kVA - 908 kVA

MODEL		GJL18 S	GJL25 S	GJL30 S	GJL35 S	GJL44 S	GJL55 S	GJL70 S	GJL75 S	GJL 60 V
STAND BY	kVA	18	25	30	35	44	55	70	75	60
	kW	14,4	20	24	28	35,2	44	56	60	48
PRIME	kVA	16	23	28	32	40	50	63	68	55
	kW	12,8	18,4	22,4	25,6	32	40	50,4	54,4	44
RATED SPEED	r.p.m	1500	1500	1500	1500	1500	1500	1500	1500	1500/1800
VOLTAGE	V	230/400	230/400	230/400	230/400	230/400	230/400	230/400	230/400	230/400
POWER FACTOR	cos Phi	0,8	0,8	0,8	0,8	0,8	0,8	0,8	0,8	0,8
ENGINE										
RATED OUTPUT POWER	kW	18	24	30	35	44	54	65	70	56
BRAND		LISTER PETTER	LISTER PETTER	LISTER PETTER	LISTER PETTER	LISTER PETTER	LISTER PETTER	LISTER PETTER	LISTER PETTER	LISTER PETTER
MODEL		SA42361	SA42761	SA43061	SA43261	SA43262	SA43561	SA44161	SA44162	LP44361
MODEL SERIES		STARLITE	STARLITE	STARLITE	STARLITE	STARLITE	STARLITE	STARLITE	STARLITE	VENUS
ENGINE TYPE		4 Stroke Diesel	4 Stroke Diesel	4 Stroke Diesel	4 Stroke Diesel	4 Stroke Diesel	4 Stroke Diesel	4 Stroke Diesel	4 Stroke Diesel	4 Stroke Diesel
INJECTION TYPE		Direct Injection	Direct Injection	Direct Injection	Direct Injection	Direct Injection	Direct Injection	Direct Injection	Direct Injection	Direct Injection
ASPIRATION TYPE		Naturally Aspirated	Naturally Aspirated	Naturally Aspirated	Naturally Aspirated	Turbo Charge	Turbo Charge	Turbo Charge	Turbo Charge & Intercooler	Turbo Charge
NUMBER OF CYLINDERS		4	4	4	4	4	4	4	4	4
CYLINDER BORE AND STROKE	mm	85x100	90x105	95x105	98x105	98x105	98x115	105x118	105x118	125x124
CYLINDER VOLUME	L	2,3	2,7	3,0	3,2	3,2	3,5	4,1	4,1	4,3
COOLING TYPE		Water Cooled	Water Cooled	Water Cooled	Water Cooled	Water Cooled	Water Cooled	Water Cooled	Water Cooled	Water Cooled
COMPRESSION RATE		18,0:1	18,5:1	18,5:1	18,5:1	18,5:1	18,5:1	18,0:1	18,0:1	17,3:1
STAND BY LOAD FUEL CONSUMPTION	l/h	5,39	6,74	8,18	9,4	11,26	14,2	17,88	18,55	13,9
100% PRIME LOAD FUEL CONSUMPTION	l/h	4,9	5,76	7,31	8,51	9,73	12,26	15,26	16,1	12,9
75% PRIME LOAD FUEL CONSUMPTION	l/h	3,85	4,24	5,48	6,15	7,33	9,37	11,55	12,36	9,7
50% PRIME LOAD FUEL CONSUMPTION	l/h	2,75	3,4	3,86	4,35	5,2	6,57	8,06	8,58	7,3
TOTAL OIL CAPACITY	L	6	8	8	8	8	8	8	8	13
TOTAL COOLING CAPACITY	L	9,1	9,8	11,4	12,6	13,25	14,25	27,6	27,6	31
EMISSION		Stage II	Stage II	Stage II	Stage II	Stage II	Stage II	Stage II	Stage II	Stage II
GOVERNOR TYPE	Type	Electronic	Electronic	Electronic	Electronic	Electronic	Electronic	Electronic	Electronic	Electronic
ALTERNATOR										
BRAND		Maranello/ Leroy Somer	Maranello/ Leroy Somer	Maranello/ Leroy Somer	Maranello/ Leroy Somer	Maranello/ Leroy Somer	Maranello/ Leroy Somer	Maranello/ Leroy Somer	Maranello/ Leroy Somer	Maranello/ Leroy Somer
DIMENSIONS (OPEN SET)										
LXWXH	mm	1550x820x1080	1550x820x1080	1770x850x1440	1770x850x1440	1770x850x1440	1770x850x1440	1900x900x1610	2200x1000x1610	1900x900x1610
WEIGHT	kg	475	545	700	700	810	850	950	1010	900
FUEL TANK	lt	70	70	135	135	135	135	220	300	220
DIMENSIONS (CANOPIED)										
LXWXH	mm	1900x920x1340	1900x920x1340	2225x950x1660	2225x950x1660	2225x950x1640	2225x950x1660	2440x1000x1860	2750x1100x1860	2440x1000x1860
WEIGHT	kg	600	730	1010	1010	1040	1220	1360	1410	1300
FUEL TANK	lt	70	70	135	135	135	135	220	300	220



GJL SERIES

18 kVA - 908 kVA

MODEL		GJL 70 V	GJL90 V	GJL110 V	GJL125 V	GJL138 V	GJL151 V	GJL165 V	GJL206 V	GJL227 V
STAND BY	kVA	70	90	110	125	138	151	165	206	227
	kW	56	72	88	100	110,4	120,8	132	164,8	181,6
PRIME	kVA	63	83	100	113	125	138	150	188	206
	kW	50,4	66,4	80	90,4	100	110,4	120	150,4	164,8
RATED SPEED	r.p.m	1500/1800	1500/1800	1500/1800	1500/1800	1500/1800	1500/1800	1500/1800	1500/1800	1500/1800
VOLTAGE	V	230/400	230/400	230/400	230/400	230/400	230/400	230/400	230/400	230/400
POWER FACTOR	cos Phi	0,8	0,8	0,8	0,8	0,8	0,8	0,8	0,8	0,8
ENGINE										
RATED OUTPUT POWER	kW	68	86	105	116	132	141	155	185	204
BRAND		LISTER PETTER	LISTER PETTER	LISTER PETTER	LISTER PETTER	LISTER PETTER	LISTER PETTER	LISTER PETTER	LISTER PETTER	LISTER PETTER
MODEL		LP44362	LP44363	LP44364	LP44365	LP44366	LP46561	LP66562	LP66563	LP68961
MODEL SERIES		VENUS	VENUS	VENUS	VENUS	VENUS	VENUS	VENUS	VENUS	VENUS
ENGINE TYPE		4 Stroke Diesel	4 Stroke Diesel	4 Stroke Diesel	4 Stroke Diesel	4 Stroke Diesel	4 Stroke Diesel	4 Stroke Diesel	4 Stroke Diesel	4 Stroke Diesel
INJECTION TYPE		Direct Injection	Direct Injection	Direct Injection	Direct Injection	Direct Injection	Direct Injection	Direct Injection	Direct Injection	Direct Injection
ASPIRATION TYPE		Turbo Charge	Turbo Charge	Turbo Charge & Air Intercooler	Turbo Charge & Air Intercooler	Turbo Charge & Air Intercooler	Turbo Charge & Air Intercooler	Turbo Charge & Air Intercooler	Turbo Charge & Air Intercooler	Turbo Charge & Air Intercooler
NUMBER OF CYLINDERS		4	4	4	4	4	6	6	6	6
CYLINDER BORE AND STROKE	mm	105x124	105x124	105x124	105x124	105x124	105x124	105x124	105x124	114x144
CYLINDER VOLUME	L	4,3	4,3	4,3	4,3	4,3	6,5	6,5	6,5	8,9
COOLING TYPE		Water Cooled	Water Cooled	Water Cooled	Water Cooled	Water Cooled	Water Cooled	Water Cooled	Water Cooled	Water Cooled
COMPRESSION RATE			17,3:1	16:01	16:01	16:01	16:01	16:01	16:01	18:01
STAND BY LOAD FUEL CONSUMPTION	l/h	16,7	21,8	25,9	27,7	31,5	34	36,8	44,4	49,6
100% PRIME LOAD FUEL CONSUMPTION	l/h	15,1	19,5	23	25	28,3	30,5	33,1	39,7	44,1
75% PRIME LOAD FUEL CONSUMPTION	l/h	11,8	14,3	17,1	16,7	21,3	23	25,2	29,5	32,8
50% PRIME LOAD FUEL CONSUMPTION	l/h	8,1	9,9	11,8	12,8	14,4	16,2	17,6	20,5	22,8
TOTAL OIL CAPACITY	L	13	13	13	13	13	17,5	17,5	17,5	19
TOTAL COOLING CAPACITY	L	31	31	31	31	31	42	42	42	48
EMISSION		Stage II	Stage II	Stage II	Stage II	Stage II	Stage II	Stage II	Stage II	Stage II
GOVERNOR TYPE	Type	Electronic	Electronic	Electronic	Electronic	Electronic	Electronic	Electronic	Electronic	Electronic
ALTERNATOR										
BRAND		Maranello/ Leroy Somer	Maranello/ Leroy Somer	Maranello/ Leroy Somer	Maranello/ Leroy Somer	Maranello/ Leroy Somer	Maranello/ Leroy Somer	Maranello/ Leroy Somer	Maranello/ Leroy Somer	Maranello/ Leroy Somer
DIMENSIONS (OPEN SET)										
LXWXH	mm	1900x900x1610	2200x1000x1610	2200x1000x1610	2460x1100x1740	2460x1100x1740	2460x1100x1740	2300x1100x1840	2600x1100x1940	2600x1100x1940
WEIGHT	kg	950	1010	1150	1450	1490	1500	1600	1650	1760
FUEL TANK	lt	220	300	300	310	310	310	320	360	360
DIMENSIONS (CANOPIED)										
LXWXH	mm	2440x1000x1860	2750x1100x1860	2980x1100x2000	2980x1100x2000	2980x1100x2000	2980x1100x2000	3200x1100x2100	3500x1100x2240	3500x1100x2240
WEIGHT	kg	1360	1410	1570	1800	1790	1868	2010	2000	2100
FUEL TANK	lt	220	300	300	310	310	310	320	360	360



GJL SERIES

18 kVA - 908 kVA

MODEL		GJL248 V	GJL275 V	GJL308 V	GJL358 V	GJL385 V	GJL413 V	GJL440 V	GJL90 VM	GJL100 VM
STAND BY	kVA	248	275	308	358	385	413	440	90	100
	kW	198,4	220	246,4	286,4	308	330,4	352	72	80
PRIME	kVA	225	250	280	325	350	375	400	83	90
	kW	180	200	224	260	280	300	320	66,4	72
RATED SPEED	r.p.m	1500/1800	1500/1800	1500/1800	1500/1800	1500/1800	1500/1800	1500/1800	1500/1800	1500/1800
VOLTAGE	V	230/400	230/400	230/400	230/400	230/400	230/400	230/400	230/400	230/400
POWER FACTOR	cos Phi	0,8	0,8	0,8	0,8	0,8	0,8	0,8	0,8	0,8
ENGINE										
RATED OUTPUT POWER	kW	228	253	280	308	338	373	405	86	105
BRAND		LISTER PETTER	LISTER PETTER	LISTER PETTER	LISTER PETTER	LISTER PETTER	LISTER PETTER	LISTER PETTER	LISTER PETTER	LISTER PETTER
MODEL		LP689G2	LP689G3	LP612G1	LP612G2	LP612G3	LP613G1	LP613G2	LP443EG3	LP443EG4
MODEL SERIES		VENUS	VENUS	VENUS	VENUS	VENUS	VENUS	VENUS	VENUS MAX	VENUS MAX
ENGINE TYPE		4 Stroke Diesel	4 Stroke Diesel	4 Stroke Diesel	4 Stroke Diesel	4 Stroke Diesel	4 Stroke Diesel	4 Stroke Diesel	4 Stroke Diesel	4 Stroke Diesel
INJECTION TYPE		Direct Injection	Direct Injection	Direct Injection	Direct Injection	Direct Injection	Direct Injection	Direct Injection	Direct Injection	Direct Injection
ASPIRATION TYPE		Turbo Charge & Air Air Intercooler	Turbo Charge & Air Air Intercooler	Turbo Charge & Air Air Intercooler	Turbo Charge & Air Air Intercooler	Turbo Charge & Air Air Intercooler	Turbo Charge & Air Air Intercooler	Turbo Charge & Air Air Intercooler	Turbo Charge & Air Air Intercooler	Turbo Charge & Air Air Intercooler
NUMBER OF CYLINDERS		6	6	6	6	6	6	6	4	4
CYLINDER BORE AND STROKE	mm	114x144	114x144	128x153	128x153	128x153	130x161	130x161	105x124	105x124
CYLINDER VOLUME	L	8,9	8,9	11,8	11,8	11,8	12,8	12,8	4,3	4,3
COOLING TYPE		Water Cooled	Water Cooled	Water Cooled	Water Cooled	Water Cooled	Water Cooled	Water Cooled	Water Cooled	Water Cooled
COMPRESSION RATE		18:01	16,5:1	17:01	17:01	17:01	17:01	17:01	17,3:1	16:01
STAND BY LOAD FUEL CONSUMPTION	l/h	55,5	61,3	65,5	74,3	81	97	92,7	20,3	24,8
100% PRIME LOAD FUEL CONSUMPTION	l/h	49,6	55,1	58,8	66,9	72,9	88	84,8	18,2	22,1
75% PRIME LOAD FUEL CONSUMPTION	l/h	36,8	40,7	47,5	49	54,1	64	64,1	13,6	16,5
50% PRIME LOAD FUEL CONSUMPTION	l/h	25,7	27,7	30,3	33,8	37	42	42	9,1	11,1
TOTAL OIL CAPACITY	L	19	25	41	41	41	36	36	13	13
TOTAL COOLING CAPACITY	L	48	48	56	56	56	56	56	31	31
EMISSION		Stage II	Stage II	Stage II	Stage II	Stage II	Stage II	Stage II	Stage III	Stage III
GOVERNOR TYPE	Type	Electronic	Electronic	Electronic	Electronic	Electronic	Electronic	Electronic	ECU	ECU
ALTERNATOR										
BRAND		Maranello/ Leroy Somer	Maranello/ Leroy Somer	Maranello/ Leroy Somer	Maranello/ Leroy Somer	Maranello/ Leroy Somer	Maranello/ Leroy Somer	Maranello/ Leroy Somer	Maranello/ Leroy Somer	Maranello/ Leroy Somer
DIMENSIONS (OPEN SET)										
LXWXH	mm	2600x1250x1980	2600x1250x1980	2980x1250x2100	2980x1250x2100	3300x1600x2400	3300x1600x2400	3300x1600x2400	2200x1000x1610	2200x1000x1610
WEIGHT	kg	1950	2350	2500	2650	3250	3100	3500	1010	1150
FUEL TANK	lt	550	550	590	590	810	810	810	300	300
DIMENSIONS (CANOPIED)										
LXWXH	mm	3500x1250x2280	3500x1250x2280	3950x1250x2450	3950x1250x2450	4640x1600x2750	4640x1600x2750	4640x1600x2750	2750x1100x1840	2980x1100x2000
WEIGHT	kg	2250	2534	2880	3000	4500	4400	4800	1410	1570
FUEL TANK	lt	550	550	590	590	810	810	810	300	300



GJL SERIES

18 kVA - 908 kVA

MODEL		GJL110 VM	GJL125 VM	GJL159 VM	GJL165 VM	GJL206 VM	GJL220 VM	GJL220 VM	GJL248 VM	GJL275 VM
STAND BY	kVA	110	125	159	165	206	220	220	248	275
	kW	88	100	127,2	132	164,8	176	176	198,4	220
PRIME	kVA	100	113	138	150	188	200	200	225	250
	kW	80	90,4	110,4	120	150,4	160	160	180	200
RATED SPEED	r.p.m	1500/1800	1500/1800	1500/1800	1500/1800	1500/1800	1500/1800	1500/1800	1500/1800	1500/1800
VOLTAGE	V	230/400	230/400	230/400	230/400	230/400	230/400	230/400	230/400	230/400
POWER FACTOR	cos Phi	0,8	0,8	0,8	0,8	0,8	0,8	0,8	0,8	0,8
ENGINE										
RATED OUTPUT POWER	kW	117	140	141	155	185	205	204	228	253
BRAND		LISTER PETTER	LISTER PETTER	LISTER PETTER	LISTER PETTER	LISTER PETTER	LISTER PETTER	LISTER PETTER	LISTER PETTER	LISTER PETTER
MODEL		LP443EG5	LP443EG6	LP665EG1	LP665EG2	LP665EG3	LP665EG4	LP689EG1	LP689EG2	LP689EG3
MODEL SERIES		VENUS MAX	VENUS MAX	VENUS MAX	VENUS MAX	VENUS MAX	VENUS MAX	VENUS MAX	VENUS MAX	VENUS MAX
ENGINE TYPE		4 Stroke Diesel	4 Stroke Diesel	4 Stroke Diesel	4 Stroke Diesel	4 Stroke Diesel	4 Stroke Diesel	4 Stroke Diesel	4 Stroke Diesel	4 Stroke Diesel
INJECTION TYPE		Direct Injection	Direct Injection	Direct Injection	Direct Injection	Direct Injection	Direct Injection	Direct Injection	Direct Injection	Direct Injection
ASPIRATION TYPE		Turbo Charge & Air Air Intercooler	Turbo Charge & Air Air Intercooler	Turbo Charge & Air Air Intercooler	Turbo Charge & Air Air Intercooler	Turbo Charge & Air Air Intercooler	Turbo Charge & Air Air Intercooler	Turbo Charge & Air Air Intercooler	Turbo Charge & Air Air Intercooler	Turbo Charge & Air Air Intercooler
NUMBER OF CYLINDERS		4	4	6	6	6	6	6	6	6
CYLINDER BORE AND STROKE	mm	105x124	105x124	105x124	105x124	105x124	105x124	114x144	114x144	114x144
CYLINDER VOLUME	L	4,3	4,3	6,5	6,5	6,5	6,5	8,9	8,9	8,9
COOLING TYPE		Water Cooled	Water Cooled	Water Cooled	Water Cooled	Water Cooled	Water Cooled	Water Cooled	Water Cooled	Water Cooled
COMPRESSION RATE		16:01	16:01	16:01	16:01	16:01	16:01	16:01	16:5:1	16:5:1
STAND BY LOAD FUEL CONSUMPTION	l/h	27,7	33,1	33,4	39,2	43,8	48,5	48,3	53,8	59,6
100% PRIME LOAD FUEL CONSUMPTION	l/h	24,7	29,1	29,8	35,1	39,2	43,4	43,1	48,9	53,6
75% PRIME LOAD FUEL CONSUMPTION	l/h	18,4	21,7	22,3	26,2	29,2	32,3	32,1	36,1	40
50% PRIME LOAD FUEL CONSUMPTION	l/h	12,4	14,6	15	17,6	19,6	21,7	21,6	24,3	26,9
TOTAL OIL CAPACITY	L	13	13	17,5	17,5	17,5	17,5	24	25	25
TOTAL COOLING CAPACITY	L	31	31	42	42	42	42	48	48	48
EMISSION		Stage III	Stage III	Stage III	Stage III	Stage III	Stage III	Stage III	Stage III	Stage III
GOVERNOR TYPE	Type	ECU	ECU	ECU	ECU	ECU	ECU	ECU	ECU	ECU
ALTERNATOR										
BRAND		Maranello/ Leroy Somer	Maranello/ Leroy Somer	Maranello/ Leroy Somer	Maranello/ Leroy Somer	Maranello/ Leroy Somer	Maranello/ Leroy Somer	Maranello/ Leroy Somer	Maranello/ Leroy Somer	Maranello/ Leroy Somer
DIMENSIONS (OPEN SET)										
LXWXH	mm	2200x1000x1610	2440x1100x1740	2300x1100x1840	2300x1100x1840	2600x1100x1940	2600x1100x1940	2600x1100x1940	2980x1250x2100	2600x1250x1980
WEIGHT	kg	1150	1450	1600	1600	1650	1760	1760	2500	1950
FUEL TANK	lt	300	310	320	320	360	360	360	590	550
DIMENSIONS (CANOPIED)										
LXWXH	mm	2980x1100x2000	2980x1100x2000	3200x1100x2100	3200x1100x2100	3500x1100x2240	3500x1100x2240	3500x1100x2240	3950x1250x2450	3500x1250x2280
WEIGHT	kg	1570	1800	2010	2010	2800	2100	2100	2880	2250
FUEL TANK	lt	300	310	320	320	360	360	360	590	550



GJL SERIES

18 kVA - 908 kVA

MODEL		GJL303 VM	GJL344 VM	GJL385 VM	GJL413 VM	GJL440 VM	GJL495 VM	GJL550 VM
STAND BY	kVA	303	344	385	413	440	495	550
	kW	242,4	275,2	308	330,4	352	396	440
PRIME	kVA	275	313	350	375	400	450	500
	kW	220	250,4	280	300	320	360	400
RATED SPEED	r.p.m	1500/1800	1500/1800	1500/1800	1500/1800	1500/1800	1500	1500
VOLTAGE	V	230/400	230/400	230/400	230/400	230/400	230/400	230/400
POWER FACTOR	cos Phi	0,8	0,8	0,8	0,8	0,8	0,8	0,8
ENGINE								
RATED OUTPUT POWER	kW	280	308	338	380	400	441	490
BRAND		LISTER PETTER	LISTER PETTER	LISTER PETTER	LISTER PETTER	LISTER PETTER	LISTER PETTER	LISTER PETTER
MODEL		LP689EG4	LP612EG1	LP612EG2	LP612EG3	LP613EG1	LP613EG2	LP613EG3
MODEL SERIES		VENUS MAX	VENUS MAX	VENUS MAX	VENUS MAX	VENUS MAX	VENUS MAX	VENUS MAX
ENGINE TYPE		4 Stroke Diesel	4 Stroke Diesel	4 Stroke Diesel	4 Stroke Diesel	4 Stroke Diesel	4 Stroke Diesel	4 Stroke Diesel
INJECTION TYPE		Direct Injection	Direct Injection	Direct Injection	Direct Injection	Direct Injection	Direct Injection	Direct Injection
ASPIRATION TYPE		Turbo Charge & Air-Air Intercooler	Turbo Charge & Air-Air Intercooler	Turbo Charge & Air-Air Intercooler	Turbo Charge & Air-Air Intercooler	Turbo Charge & Air-Air Intercooler	Turbo Charge & Air-Air Intercooler	Turbo Charge & Air-Air Intercooler
NUMBER OF CYLINDERS		6	6	6	6	6	6	6
CYLINDER BORE AND STROKE	mm	114x144	128x153	128x153	128x153	130x161	130x161	130x161
CYLINDER VOLUME	L	8,9	11,8	11,8	11,8	12,8	12,8	12,8
COOLING TYPE		Water Cooled	Water Cooled	Water Cooled	Water Cooled	Water Cooled	Water Cooled	Water Cooled
COMPRESSION RATE		16,5:1	17:01	17:01	17:01	17:01	17:01	17:01
STAND BY LOAD FUEL CONSUMPTION	l/h	66,2	72,9	80	89,9	100,7	102,7	122
100% PRIME LOAD FUEL CONSUMPTION	l/h	59,4	65,3	71,6	79,3	96,1	99,1	109
75% PRIME LOAD FUEL CONSUMPTION	l/h	44,3	48,7	53,4	59,1	70,3	72,3	81
50% PRIME LOAD FUEL CONSUMPTION	l/h	29,8	32,7	35,9	39,7	45	48	55
TOTAL OIL CAPACITY	L	25	16,3	41	41	36	36	40
TOTAL COOLING CAPACITY	L	48	56	56	56	56	56	56
EMISSION		Stage III	Stage III	Stage III	Stage III	Stage III	Stage III	Stage III
GOVERNOR TYPE	Type	ECU	ECU	ECU	ECU	ECU	ECU	ECU
ALTERNATOR								
BRAND		Maranello/ Leroy Somer	Maranello/ Leroy Somer	Maranello/ Leroy Somer	Maranello/ Leroy Somer	Maranello/ Leroy Somer	Maranello/ Leroy Somer	Maranello/ Leroy Somer
DIMENSIONS (OPEN SET)								
LXWXH	mm	2600x1250x1980	2980x1250x2100	3300x1600x2400	3300x1600x2400	3300x1600x2400	3600x1600x2400	3600x1600x2400
WEIGHT	kg	2350	2650	3250	3100	3500	3890	4080
FUEL TANK	lt	550	590	810	810	810	810	810
DIMENSIONS (CANOPIED)								
LXWXH	mm	3500x1250x2280	3950x1250x2450	4640x1600x2750	4640x1600x2750	4640x1600x2750	4640x1600x2750	4640x1600x2750
WEIGHT	kg	2534	3000	4500	4400	4800	4900	4992
FUEL TANK	lt	550	590	810	810	810	810	810



GJL SERIES

18 kVA - 908 kVA

MODEL		GJL550 MM	GJL663 MM	GJL700 MM	GJL770 MM	GJL825 MM	GJL908 MM
STAND BY	kVA	550	633	700	770	825	908
	kW	440	506,4	560	616	660	726,4
PRIME	kVA	500	575	638	700	750	825
	kW	400	460	510,4	560	600	660
RATED SPEED	r.p.m	1500	1500	1500	1500	1500	1500
VOLTAGE	V	230/400	230/400	230/400	230/400	230/400	230/400
POWER FACTOR	cos Phi	0,8	0,8	0,8	0,8	0,8	0,8
ENGINE							
RATED OUTPUT POWER	kW	506	572	629	684	754	800
BRAND		LISTER PETTER	LISTER PETTER	LISTER PETTER	LISTER PETTER	LISTER PETTER	LISTER PETTER
MODEL		LP625EG1	LP625EG2	LP625EG3	LP625EG4	LP625EG5	LP625EG7
MODEL SERIES		MARS MAX	MARS MAX	MARS MAX	MARS MAX	MARS MAX	MARS MAX
ENGINE TYPE		4 Stroke Diesel	4 Stroke Diesel	4 Stroke Diesel	4 Stroke Diesel	4 Stroke Diesel	4 Stroke Diesel
INJECTION TYPE		Direct Injection	Direct Injection	Direct Injection	Direct Injection	Direct Injection	Direct Injection
ASPIRATION TYPE		Turbo Charge & Air-Air Intercooler	Turbo Charge & Air-Air Intercooler	Turbo Charge & Air-Air Intercooler	Turbo Charge & Air-Air Intercooler	Turbo Charge & Air-Air Intercooler	Turbo Charge & Air-Air Intercooler
NUMBER OF CYLINDERS		6	6	6	6	6	6
CYLINDER BORE AND STROKE	mm	170x185	170x185	170x185	170x185	170x185	170x185
CYLINDER VOLUME	L	25	25	25	25	25	25
COOLING TYPE		Water Cooled	Water Cooled	Water Cooled	Water Cooled	Water Cooled	Water Cooled
COMPRESSION RATE		14,5:1	14,5:1	14,5:1	14,5:1	14,5:1	14,5:1
STAND BY LOAD FUEL CONSUMPTION	l/h	121	136	150	163	178	189
100% PRIME LOAD FUEL CONSUMPTION	l/h	111	124	136	148	163	169
75% PRIME LOAD FUEL CONSUMPTION	l/h	85	94	103	113	124	124
50% PRIME LOAD FUEL CONSUMPTION	l/h	61	68	70	77	84	84
TOTAL OIL CAPACITY	L	75	75	75	75	75	75
TOTAL COOLING CAPACITY	L	55	140	140	140	140	140
EMISSION		Stage III	Stage III	Stage III	Stage III	Stage III	Stage III
GOVERNOR TYPE	Type	ECU	ECU	ECU	ECU	ECU	ECU
ALTERNATOR							
BRAND		Maranello/ Leroy Somer	Maranello/ Leroy Somer	Maranello/ Leroy Somer	Maranello/ Leroy Somer	Maranello/ Leroy Somer	Maranello/ Leroy Somer
DIMENSIONS (OPEN SET)							
LXWXH	mm	3600x1600x2400	3600x2100x2440	3600x2100x2440	3600x2100x2440	4600x2100x2570	4600x2100x2570
WEIGHT	kg	4080	4200	4300	4500	5200	5500
FUEL TANK	lt	810	1410	1410	1410	1490	1490
DIMENSIONS (CANOPIED)							
LXWXH	mm	4640x1600x2750	5000x2100x3150	5000x2100x3150	5200x1900x3110	5450x2100x3330	5450x2100x3330
WEIGHT	kg	4992	5250	6200	6500	6720	7175
FUEL TANK	lt	810	1410	1410	1410	1490	1490



YANGDONG

DIESEL GENERATOR SETS

 YANGDONG
DIESEL ENGINES

GJY SERIES

11 kVA - 110 kVA



GJY SERIES

11 kVA - 110 kVA

MODEL		GJY11	GJY12	GJY15	GJY20	GJY25	GJY28	GJY30	GJY33
STAND BY	kVA	11	12	15	20	25	28	30	33
	kW	8,8	9,6	12	16	20	22,4	24	26,4
PRIME	kVA	10	11	14	17	22	25	27	30
	kW	8	8,8	11,2	13,6	17,6	20	21,6	24
RATED SPEED	r.p.m	1500	1500	1500	1500	1500	1500	1500	1500
VOLTAGE	V	230/400	230/400	230/400	230/400	230/400	230/400	230/400	230/400
POWER FACTOR	cos Phi	0,8	0,8	0,8	0,8	0,8	0,8	0,8	0,8
ENGINE									
BRAND		YANGDONG	YANGDONG	YANGDONG	YANGDONG	YANGDONG	YANGDONG	YANGDONG	YANGDONG
MODEL		YD380D	YD385D	YD480D	YD485D	YD490D	Y490D	Y495D	Y4100D
ENGINE TYPE		4 Stroke - Diesel	4 Stroke - Diesel	4 Stroke - Diesel	4 Stroke - Diesel	4 Stroke - Diesel	4 Stroke - Diesel	4 Stroke - Diesel	4 Stroke - Diesel
INJECTION TYPE		Direct Injection	Direct Injection	Direct Injection	Direct Injection	Direct Injection	Direct Injection	Direct Injection	Direct Injection
ASPIRATION TYPE		Naturally Aspirated	Naturally Aspirated	Naturally Aspirated	Naturally Aspirated	Naturally Aspirated	Naturally Aspirated	Naturally Aspirated	Naturally Aspirated
NUMBER OF CYLINDERS		3	3	4	4 In line	4 In line	4 In line	4 In line	4
CYLINDER BORE AND STROKE	mm	80x90	85x90	80x90	85x95	84x95	90x105	95x105	100x118
CYLINDER VOLUME	L	1,3	1,5	1,8	2,1	2,1	2,67	2,97	3,7
COOLING TYPE		Water Cooled	Water Cooled	Water Cooled	Water Cooled	Water Cooled	Water Cooled	Water Cooled	Water Cooled
COMPRESSION RATE		22:01	22:01	22:01	18:01	18	18	18	18:01
STAND BY LOAD FUEL CONSUMPTION	l/h	3,8	4	5	5,8	5,8	6,43	6,87	7,29
100% PRIME LOAD FUEL CONSUMPTION	l/h	3,1	3,64	4,22	5,2	5,2	5,77	6,15	5,69
75% PRIME LOAD FUEL CONSUMPTION	l/h	2,86	3,12	3,43	4,3	4,3	4,81	5,27	4,04
50% PRIME LOAD FUEL CONSUMPTION	l/h	2,23	2,54	2,74	3,4	3,4	3,27	3,69	3,81
TOTAL OIL CAPACITY	L	4,1	5,3	6,7	5,5	7,6	7,6	7,6	9,7
TOTAL COOLING CAPACITY	L	6	6	7	7	10,7	10,7	10,7	10,7
GOVERNOR TYPE	Type	Mechanical	Mechanical	Mechanical	Mechanical	Mechanical	Mechanical	Mechanical	Mechanical
ALTERNATOR									
BRAND		Maranello	Maranello	Maranello	Maranello	Maranello	Maranello	Maranello	Maranello
DIMENSIONS (OPEN SET)									
LXWXH	mm	1550x820x1080	1550x820x1080	1550x820x1080	1550x820x1080	1550x820x1080	1550x820x1080	1770x850x1440	1770x850x1440
WEIGHT	kg	545	620	670	686	698	748	897	965
FUEL TANK	lt	70	70	70	70	70	70	135	135
DIMENSIONS (CANOPIED)									
LXWXH	mm	1900x920x1340	1900x920x1340	1900x920x1340	1900x920x1340	1900x920x1340	1900x920x1340	2225x950x1660	2225x950x1660
WEIGHT	kg	600	675	700	716	728	778	932	1000
FUEL TANK	lt	70	70	70	70	70	70	135	135



GJY SERIES

11 kVA - 110 kVA

MODEL		GJY40	GJY44	GJY50	GJY55	GJY66	GJY75	GJY100	GJY110
STAND BY	kVA	40	44	50	55	66	75	100	110
	kW	32	35,2	40	44	52,8	60	80	88
PRIME	kVA	35	40	45	50	60	68	87	100
	kW	28	32	36	40	48	54,4	69,6	80
RATED SPEED	r.p.m	1500	1500	1500	1500	1500	1500	1500	1500
VOLTAGE	V	230/400	230/400	230/400	230/400	230/400	230/400	230/400	230/400
POWER FACTOR	cos Phi	0,8	0,8	0,8	0,8	0,8	0,8	0,8	0,8
ENGINE									
BRAND		YANGDONG	YANGDONG	YANGDONG	YANGDONG	YANGDONG	YANGDONG	YANGDONG	YANGDONG
MODEL		Y4102D	Y4105D	Y4110D	Y4102ZLD	Y4105ZLD	YD4E2LD	Y4110ZLDA	Y4GLD
ENGINE TYPE		4 Stroke - Diesel	4 Stroke - Diesel	4 Stroke - Diesel	4 Stroke - Diesel	4 Stroke - Diesel	4 Stroke - Diesel	4 Stroke - Diesel	4 Stroke - Diesel
INJECTION TYPE		Direct Injection	Direct Injection	Direct Injection	Direct Injection	Direct Injection	Direct Injection	Direct Injection	Direct Injection
ASPIRATION TYPE		Naturally Aspirated	Naturally Aspirated	Naturally Aspirated	Naturally Aspirated	Turbo Charge & Aftercooler	Turbo Charge & Aftercooler	Turbo Charge & Aftercooler	Turbo Charge & Aftercooler
NUMBER OF CYLINDERS		4	4	4	4	4	4	4	4
CYLINDER BORE AND STROKE	mm	100x118	105x118	110x118	102x118	105x118	105x118	110x118	110x118
CYLINDER VOLUME	L	3,8	4,1	4,48	3,87	4,1	4,1	4,3	4,3
COOLING TYPE		Water Cooled	Water Cooled	Water Cooled	Water Cooled	Water Cooled	Water Cooled	Water Cooled	Water Cooled
COMPRESSION RATE		18:01	18:01	18:01	18:01	18:01	18:01	18:01	18:01
STAND BY LOAD FUEL CONSUMPTION	l/h	7,61	8,8	12,03	10,8	12,1	12,3	13,5	22,1
100% PRIME LOAD FUEL CONSUMPTION	l/h	6,02	6,75	9,15	8,52	9,71	9,9	10,6	18,9
75% PRIME LOAD FUEL CONSUMPTION	l/h	4,76	5,58	6,91	6,71	7,57	7,63	7,9	14,2
50% PRIME LOAD FUEL CONSUMPTION	l/h	3,97	4,17	5,09	4,58	5,02	5,17	5,32	8,3
TOTAL OIL CAPACITY	L	10,46	10,46	10,46	10,46	10,46	10,46	12	17
TOTAL COOLING CAPACITY	L	10,7	10,7	10,7	10,7	10,7	10,7	12	7,2
GOVERNOR TYPE	Type	Mechanical	Mechanical	Mechanical	Mechanical	Electronic	Electronic	Electronic	Electronic
ALTERNATOR									
BRAND		Maranello	Maranello	Maranello	Maranello	Maranello	Maranello	Maranello	Maranello
DIMENSIONS (OPEN SET)									
LXWXH	mm	1770x850x1440	1770x850x1440	1770x850x1440	1900x900x1610	1900x900x1610	2200x1000x1610	2200x1000x1610	2200x1000x1610
WEIGHT	kg	1005	1057	1121	1185	1265	1331	1365	1415
FUEL TANK	lt	135	135	135	220	220	300	300	300
DIMENSIONS (CANOPIED)									
LXWXH	mm	2225x950x1660	2225x950x1660	2225x950x1660	2440x1000x1860	2440x1000x1860	2750x1100x1860	2750x1100x1860	2750x1100x1860
WEIGHT	kg	1040	1092	1156	1220	1300	1366	1400	1540
FUEL TANK	lt	135	135	135	220	220	300	300	300



DOOSAN

DIESEL GENERATOR SETS



GJD SERIES
65 kVA - 1000 kVA



GJD SERIES

65 kVA - 1000 kVA

MODEL		GJD66	GJD88	GJD170	GJD225	GJD250	GJD300	GJD330	GJD410	GJD490
STAND BY	kVA	66	88	170	225	250	300	330	410	490
	kW	52,8	70,4	136	180	200	240	264	328	392
PRIME	kVA	60	80	150	200	230	275	300	370	445
	kW	48	64	120	160	184	220	240	296	356
RATED SPEED	r.p.m	1500	1500	1500	1500	1500	1500	1500	1500	1500
VOLTAGE	V	230/400	230/400	230/400	230/400	230/400	230/400	230/400	230/400	230/400
POWER FACTOR	Cos Phi	0,8	0,8	0,8	0,8	0,8	0,8	0,8	0,8	0,8
ENGINE										
BRAND		DOOSAN	DOOSAN	DOOSAN	DOOSAN	DOOSAN	DOOSAN	DOOSAN	DOOSAN	DOOSAN
MODEL		SP344CB	SP344CC	DP086TA	P086TI	DP086LA	P126TI	P126TI-II	DP126LB	P158LE
ENGINE TYPE		4 Stroke - Diesel	4 Stroke - Diesel	4 Stroke - Diesel	4 Stroke - Diesel	4 Stroke - Diesel	4 Stroke - Diesel	4 Stroke - Diesel	4 Stroke - Diesel	4 Stroke - Diesel
INJECTION TYPE		Direct Injection	Direct Injection	Direct Injection	Direct Injection	Direct Injection	Direct Injection	Direct Injection	Direct Injection	Direct Injection
ASPIRATION TYPE		Turbo Charge	Turbo Charge	Turbo Charge	Turbo Charge & Intercooler	Turbo Charge & Intercooler	Turbo Charge & Intercooler	Turbo Charge & Intercooler	Turbo Charge & Intercooler	Turbo Charge & Intercooler
NUMBER OF CYLINDERS		4	4	6	6	6	6	6	6	8
CYLINDER BORE AND STROKE	mm	98x113	98x113	111x139	111x139	111x139	123x155	123x155	123x155	128x142
CYLINDER VOLUME	L	3,4	3,4	8	8	8	11	11	11	14,6
COOLING TYPE		Water Cooled	Water Cooled	Water Cooled	Water Cooled	Water Cooled	Water Cooled	Water Cooled	Water Cooled	Water Cooled
COMPRESSION RATE		16:08	16:08	16:07	16:04	16:07	17:01	17:01	17:02	15:01
STAND BY LOAD FUEL CONSUMPTION	l/h	N/A	N/A	37,9	47,4	54,4	66,2	77,6	84,5	102,9
100% PRIME LOAD FUEL CONSUMPTION	l/h	N/A	N/A	33,7	43,1	48,7	58,1	63,1	76	89,3
75% PRIME LOAD FUEL CONSUMPTION	l/h	N/A	N/A	25,5	31,7	36,8	43,6	47	57,1	65,1
50% PRIME LOAD FUEL CONSUMPTION	l/h	N/A	N/A	17,4	21,1	24,6	30	31,3	38,4	43,9
TOTAL OIL CAPACITY	L	N/A	N/A	15,5	15,5	15,5	23	23	44	21
TOTAL COOLING CAPACITY	L	N/A	N/A	44	44	44	51	51	51	80
GOVERNOR TYPE	Type	Mechanical	Mechanical	Mechanical	Electronic	Electronic	Electronic	Electronic	Electronic	Electronic
ALTERNATOR										
BRAND		Mitsubishi/Leroy-Somer/Sterndal	Mitsubishi/Leroy-Somer/Sterndal	Mitsubishi/Leroy-Somer/Sterndal	Mitsubishi/Leroy-Somer/Sterndal	Mitsubishi/Leroy-Somer/Sterndal	Mitsubishi/Leroy-Somer/Sterndal	Mitsubishi/Leroy-Somer/Sterndal	Mitsubishi/Leroy-Somer/Sterndal	Mitsubishi/Leroy-Somer/Sterndal
DIMENSIONS (OPEN SET)										
LXWXH	mm	1900x900x1610	2200x1000x1610	2600x1100x1940	2600x1100x1940	2600x1100x1980	2600x1100x1980	2980x1250x2100	3300x1600x2400	3300x1600x2400
WEIGHT	kg	1392	1400	1983	2100	2125	2400	2694	4143	4380
FUEL TANK	lt	220	300	360	360	550	550	590	810	810
DIMENSIONS (CANOPIED)										
LXWXH	mm	2440x1000x1860	2750x1100x1860	3500x1100x2240	3500x1100x2240	3500x1250x2280	3500x1250x2280	3950x1250x2450	4640x1600x2750	4640x1600x2750
WEIGHT	kg	1475	1488	2146	2223	2250	2534	2880	4500	4800
FUEL TANK	lt	220	300	360	360	550	550	590	810	810



GJD SERIES

65 kVA - 1000 kVA

MODEL		GJD510	GJD590	GJD630	GJD710	GJD750	GJD825	GJD900	GJD1000
STAND BY	kVA	510	590	630	710	750	825	900	1000
	kW	408	472	504	568	600	660	720	800
PRIME	kVA	460	525	575	640	680	750	800	900
	kW	368	420	448	512	544	600	640	720
RATED SPEED	r.p.m	1500	1500	1500	1500	1500	1500	1500	1500
VOLTAGE	V	230/400	230/400	230/400	230/400	230/400	230/400	230/400	230/400
POWER FACTOR	Cos Phi	0,8	0,8	0,8	0,8	0,8	0,8	0,8	0,8
ENGINE									
BRAND		DOOSAN	DOOSAN	DOOSAN	DOOSAN	DOOSAN	DOOSAN	DOOSAN	DOOSAN
MODEL		DP158LC	DP158LD	DP180LA	DP180LB	DP222LB	DP222LC	DP222CB	DP222CC
ENGINE TYPE		4 Stroke - Diesel	4 Stroke - Diesel	4 Stroke - Diesel	4 Stroke - Diesel	4 Stroke - Diesel	4 Stroke - Diesel	4 Stroke - Diesel	4 Stroke - Diesel
INJECTION TYPE		Direct Injection	Direct Injection	Direct Injection	Direct Injection	Direct Injection	Direct Injection	Direct Injection	Direct Injection
ASPIRATION TYPE		Turbo Charge & Intercooler	Turbo Charge & Intercooler	Turbo Charge & Intercooler	Turbo Charge & Intercooler	Turbo Charge & Intercooler	Turbo Charge & Intercooler	Turbo Charge & Intercooler	Turbo Charge & Intercooler
NUMBER OF CYLINDERS		8	8	10	10	12	12	12	12
CYLINDER BORE AND STROKE	mm	128x142	128x142	128x142	128x142	128x142	128x142	128x142	128x142
CYLINDER VOLUME	L	14,6	14,6	18,2	18,2	21,9	21,9	21,9	21,9
COOLING TYPE		Water Cooled	Water Cooled	Water Cooled	Water Cooled	Water Cooled	Water Cooled	Water Cooled	Water Cooled
COMPRESSION RATE		15:01	15:01	15:01	15:01	15:01	15:01	14:06	14:06
STAND BY LOAD FUEL CONSUMPTION	l/h	110,9	127,8	135,4	149,5	152,4	172,8	183	212
100% PRIME LOAD FUEL CONSUMPTION	l/h	99,6	115,1	123,6	136,4	147,1	161	171	192
75% PRIME LOAD FUEL CONSUMPTION	l/h	72,9	83,4	94,2	103,8	109,2	119,1	145	162
50% PRIME LOAD FUEL CONSUMPTION	l/h	48,9	55,1	64,8	71,2	73	79,3	98	110
TOTAL OIL CAPACITY	L	22	22	34	34	34	40	75	75
TOTAL COOLING CAPACITY	L	79	79	91	91	91	114	386	386
GOVERNOR TYPE	Type	Electronic	Electronic	Electronic	Electronic	Electronic	Electronic	Electronic	Electronic
ALTERNATOR									
BRAND		Mitsubishi/Leroy-Somer/Sterndal	Mitsubishi/Leroy-Somer/Sterndal	Mitsubishi/Leroy-Somer/Sterndal	Mitsubishi/Leroy-Somer/Sterndal	Mitsubishi/Leroy-Somer/Sterndal	Mitsubishi/Leroy-Somer/Sterndal	Mitsubishi/Leroy-Somer/Sterndal	Mitsubishi/Leroy-Somer/Sterndal
DIMENSIONS (OPEN SET)									
LXWXH	mm	3600x1600x2400	3300x1600x2400	3600x2100x2440	3600x2100x2440	3600x2100x2440	4600x2100x2570	4600x2100x2570	5000x2250x2720
WEIGHT	kg	4400	4512	5133	5786	5863	6859	7352	9.561
FUEL TANK	lt	810	810	1410	1410	1410	1490	1490	2060
DIMENSIONS (CANOPIED)									
LXWXH	mm	4640x1600x2750	4640x1600x2750	5000x2100x3150	5000x2100x3150	5000x2100x3150	5450x2100x3330	5450x2100x3330	5800x2250x3480
WEIGHT	kg	4879	4992	5628	6200	6375	7468	8245	10324
FUEL TANK	lt	810	810	1410	1410	1410	1490	1490	2060



VOLVO
DIESEL GENERATOR SETS

**VOLVO
PENTA**

GJV SERIES
94 kVA - 770 kVA

GJV SERIES

VOLVO PENTA

94 kVA - 770 kVA

MODEL		GJV94	GJV110	GJV145	GJV165	GJV200	GJV220	GJV275	GJV330
STAND BY	kVA	94	110	145	165	200	220	275	330
	kW	75,2	88	116	132	160	176	220	264
PRIME	kVA	85	100	130	150	180	200	250	300
	kW	68	80	104	120	144	160	200	240
RATED SPEED	r.p.m	1500	1500	1500	1500	1500	1500	1500	1500
VOLTAGE	V	230/400	230/400	230/400	230/400	230/400	230/400	230/400	230/400
POWER FACTOR	cos Phi	0,8	0,8	0,8	0,8	0,8	0,8	0,8	0,8
ENGINE									
RATED OUTPUT POWER	kW	74	88	129	148	179	194	241	281
BRAND		VOLVO PENTA	VOLVO PENTA	VOLVO PENTA	VOLVO PENTA	VOLVO PENTA	VOLVO PENTA	VOLVO PENTA	VOLVO PENTA
MODEL		TAD530GE	TAD531GE	TAD532GE EDC4	TAD731GE	TAD732GE EDC4	TAD733GE EDC4	TAD734GE	TAD1341GE
ENGINE TYPE		4 Stroke - Diesel	4 Stroke - Diesel	4 Stroke - Diesel	4 Stroke - Diesel	4 Stroke - Diesel	4 Stroke - Diesel	4 Stroke - Diesel	4 Stroke - Diesel
INJECTION TYPE		Direct Injection	Direct Injection	Direct Injection	Direct Injection	Direct Injection	Direct Injection	Direct Injection	Direct Injection
ASPIRATION TYPE		Naturally Aspirated	Naturally Aspirated	Naturally Aspirated	Naturally Aspirated	Turbo Charge	Turbo Charge	Turbo Charge	Turbo Charge
NUMBER OF CYLINDERS		4	4	4	6	6	6	6	6
CYLINDER BORE AND STROKE	mm	108 x 130	108 x 130	108 x 130	108 x 130	108 x 130	108 x 130	108 x 130	131 x 158
CYLINDER VOLUME	L	4,76	4,76	4,76	7,15	7,15	7,15	7,15	12,78
COOLING TYPE		Water Cooled	Water Cooled	Water Cooled	Water Cooled	Water Cooled	Water Cooled	Water Cooled	Water Cooled
COMPRESSION RATE		18:01	18:01	17.5:1	18:01	18:01	18.1:1	17:01	17:01
STAND BY LOAD FUEL CONSUMPTION	l/h	23,2	23,7	32,6	40,2	44	47,2	62,8	70,5
100% PRIME LOAD FUEL CONSUMPTION	l/h	19,9	23,2	29,2	34,7	40,4	44,9	60	64,3
75% PRIME LOAD FUEL CONSUMPTION	l/h	19,2	22,5	29	33,5	40,2	44,7	55,9	49,2
50% PRIME LOAD FUEL CONSUMPTION	l/h	19,2	22,5	28,6	33,3	39,9	44,3	52,5	34
TOTAL OIL CAPACITY	L	13	13	13	20	34	34	29	44
TOTAL COOLING CAPACITY	L	7,2	7,2	7,2	14	38,4	38,4	32	36
GOVERNOR TYPE	type	Electronic	Electronic	Electronic	Mechanical	Electronic	Electronic	Electronic	Electronic
ALTERNATOR									
BRAND		Maranello / Leroy Somer	Maranello / Leroy Somer	Maranello / Leroy Somer	Maranello / Leroy Somer	Maranello / Leroy Somer	Maranello / Leroy Somer	Maranello / Leroy Somer	Maranello / Leroy Somer
DIMENSIONS (OPEN SET)									
LXWXH	mm	2200x1000x1610	2200x1000x1610	2300x1100x1840	2300x1100x1840	2600x1100x1940	2600x1100x1940	2600x1250x1980	2980x1250x2100
WEIGHT	kg	1400	1590	1760	1780	1940	2040	2374	2720
FUEL TANK	lt	300	310	320	320	360	360	550	590
DIMENSIONS (CANOPIED)									
LXWXH	mm	2750x1100x1860	2980x1100x2000	3200x1100x2100	3200x1100x2100	3500x1100x2240	3500x1100x2240	3500x1250x2280	3950x1250x2450
WEIGHT	kg	1560	1750	1920	1940	2100	2200	2534	2880
FUEL TANK	lt	300	310	320	320	360	360	550	590

GJV SERIES

VOLVO PENTA

94 kVA - 770 kVA

MODEL		GJV385	GJV415	GJV450	GJV500	GJV550	GJV630	GJV700	GJV715	GJV770
STAND BY	kVA	385	415	450	500	550	630	700	715	770
	kW	308	332	360	400	440	504	560	572	616
PRIME	kVA	350	375	400	450	500	570	630	652	700
	kW	280	300	320	360	400	456	504	521,6	560
RATED SPEED	r.p.m	1500	1500	1500	1500	1500	1500	1500	1500	1500
VOLTAGE	V	230/400	230/400	230/400	230/400	230/400	230/400	230/400	230/400	230/400
POWER FACTOR	cos Phi	0,8	0,8	0,8	0,8	0,8	0,8	0,8	0,8	0,8
ENGINE										
RATED OUTPUT POWER	kW	303	325	364	411	484	547	613	258	281
BRAND		VOLVO PENTA	VOLVO PENTA	VOLVO PENTA	VOLVO PENTA	VOLVO PENTA	VOLVO PENTA	VOLVO PENTA	VOLVO PENTA	VOLVO PENTA
MODEL		TAD1342GE	TAD1343GE	TAD1344GE	TAD1345GE	TAD1641GE	TAD1642GE	TWD1643GE	TWD1644GE	TWD1645GE
ENGINE TYPE		4 Stroke - Diesel	4 Stroke - Diesel	4 Stroke - Diesel	4 Stroke - Diesel	4 Stroke - Diesel	4 Stroke - Diesel	4 Stroke - Diesel	4 Stroke - Diesel	4 Stroke - Diesel
INJECTION TYPE		Direct Injection	Direct Injection	Direct Injection	Direct Injection	Direct Injection	Direct Injection	Direct Injection	Direct Injection	Direct Injection
ASPIRATION TYPE		Turbo Charge	Turbo Charge	Turbo Charge	Turbo Charge	Turbo Charge	Turbo Charge	Turbo Charge	Turbo Charge	Turbo Charge
NUMBER OF CYLINDERS		6	6	6	6	6	6	6	6	6
CYLINDER BORE AND STROKE	mm	131 x 158	131 x 158	131 x 158	131 x 158	144 x 165	144 x 165	144 x 165	144 x 165	144 x 165
CYLINDER VOLUME	L	12,78	12,78	12,78	12,78	16,12	16,12	16,12	16,12	16,12
COOLING TYPE		Water Cooled	Water Cooled	Water Cooled	Water Cooled	Water Cooled	Water Cooled	Water Cooled	Water Cooled	Water Cooled
COMPRESSION RATE		18.1:1	18.1:1	18.1:1	18.1:1	16.5:1	16.5:1	16.5:1	16.8:1	16.8:1
STAND BY LOAD FUEL CONSUMPTION	l/h	79,7	86,7	91	99,2	112,3	126,2	138,3	145,6	155,8
100% PRIME LOAD FUEL CONSUMPTION	l/h	71,7	78,1	84,2	93,1	103,5	119,7	131,7	133,6	150
75% PRIME LOAD FUEL CONSUMPTION	l/h	69,9	75,3	83,8	92,7	101,9	116,8	129,1	100,2	140,5
50% PRIME LOAD FUEL CONSUMPTION	l/h	69,2	74,9	82,5	92,2	101,4	115,6	128,4	67,5	139,8
TOTAL OIL CAPACITY	L	30	36	36	36	42	48	48	48	48
TOTAL COOLING CAPACITY	L	20	24	24	24	33	33	33	33	33
GOVERNOR TYPE	type	Electronic	Electronic	Electronic	Electronic	Electronic	Electronic	Electronic	Electronic	Electronic
ALTERNATOR										
BRAND		Maranello / Leroy Somer	Maranello / Leroy Somer	Maranello / Leroy Somer	Maranello / Leroy Somer	Maranello / Leroy Somer	Maranello / Leroy Somer	Maranello / Leroy Somer	Maranello / Leroy Somer	Maranello / Leroy Somer
DIMENSIONS (OPEN SET)										
LXWXH	mm	2980x1250x2100	3300x1400x2400	3300x1600x2400	3600x1600x2400	3600x1600x2400	3600x2100x2440	3600x2100x2440	3600x2100x2440	4600x2100x2320
WEIGHT	kg	3040	4340	4640	4965	5426	6015	6120	6340	7260
FUEL TANK	lt	590	810	810	810	810	1410	1410	1410	1490
DIMENSIONS (CANOPIED)										
LXWXH	mm	3950x1250x2450	4640x1400x2750	4640x1600x2750	4640x1600x2750	4440x1600x2750	5000x2100x3150	5000x2100x3150	5000x2100x3150	5450x2100x3080
WEIGHT	kg	3200	4500	4800	5125	5586	6175	6280	6500	7420
FUEL TANK	lt	810	810	810	810	810	1410	1410	1410	1490

KUBOTA

DIESEL GENERATOR SETS

GJK SERIES

11 kVA - 33 kVA



GJK SERIES

11 kVA - 33 kVA

MODEL		GJK11	GJK13
STAND BY	kVA	11	13
	kW	8,8	10,4
PRIME	kVA	10	12
	kW	8	9,6
RATED SPEED	r.p.m	1500	1500
VOLTAGE	V	230/400	230/400
POWER FACTOR	cos Phi	0,8	0,8
MOTOR			
RATED OUTPUT POWER	kW	9,5	11
BRAND		KUBOTA	KUBOTA
MODEL		D1105-E2BG	D1505-E2-BG
ENGINE TYPE		4 Stroke - Diesel	4 Stroke - Diesel
INJECTION TYPE		Direct Injection	Direct Injection
ASPIRATION TYPE		Naturally Aspirated	Naturally Aspirated
NUMBER OF CYLINDERS		3	3
CYLINDER BORE AND STROKE	mm	78x78,4	83 x 92,4
CYLINDER VOLUME	L	1,1	1,499
COOLING TYPE		Water Cooled	Water Cooled
COMPRESSION RATE		N/A	N/A
STAND BY LOAD FUEL CONSUMPTION	l/h	2,45	3,23
100% PRIME LOAD FUEL CONSUMPTION	l/h	1,84	2,43
75% PRIME LOAD FUEL CONSUMPTION	l/h	1,23	1,62
50% PRIME LOAD FUEL CONSUMPTION	l/h	1,10	1,40
TOTAL OIL CAPACITY	L	5,1	5,1
TOTAL COOLING CAPACITY	L	3	3
GOVERNOR TYPE	Type	Mechanical	Mechanical
ALTERNATOR			
BRAND		Maranello/Leroy Somer	Maranello/Leroy Somer
DIMENSIONS (OPEN SET)			
LXWXH	mm	1550x820x1080	1550x820x1080
WEIGHT	kg	420	530
FUEL TANK	lt	70	70
DIMENSIONS (CANOPIED)			
LXWXH	mm	1900x920x1340	1900x920x1340
WEIGHT	kg	580	640
FUEL TANK	lt	70	70

	GJK17	GJK22	GJK33
	17	22	33
	13,6	17,6	26,4
	15	20	30
	12	16	24
	1500	1500	1500
	230/400	230/400	230/400
	0,8	0,8	0,8
	14	18	42
	KUBOTA	KUBOTA	KUBOTA
	D1703-E2BG	V2203-E2BG	V3300-E2BG2
	4 Stroke - Diesel	4 Stroke - Diesel	4 Stroke - Diesel
	Direct Injection	Direct Injection	Direct Injection
	Naturally Aspirated	Naturally Aspirated	Naturally Aspirated
	3	3	3
	87 x 92,4	87 x 92,4	98 x 110
	1,447	2,1	3,318
	Water Cooled	Water Cooled	Water Cooled
	N/A	23:01:00	22,6
	3,51	5,60	7,15
	2,44	4,20	5,37
	1,76	2,80	3,58
	1,60	2,40	3,40
	6	9,7	13,2
	4	5,3	10
	Mechanical	Mechanical	Mechanical
	Maranello/Leroy Somer	Maranello/Leroy Somer	Maranello/Leroy Somer
	1550x820x1080	1770x850x1440	1770x850x1440
	620	725	925
	70	135	135
	1900x920x1340	2225x950x1660	2225x950x1660
	716	932	1000
	70	135	135

TÜMOSAN

DIESEL GENERATOR SETS



GJT SERIES

33 kVA - 110 kVA



GJT SERIES
33 kVA - 110 kVA



MODEL		GJT33	GJT44	GJT55	GJT66	GJT77	GJT88	GJT110
STAND BY	kVA	33	44	55	66	77	88	110
	kW	26,4	35,2	44	52,8	61,6	70,4	88
PRIME	kVA	30	40	50	60	70	80	100
	kW	24	32	40	48	56	64	80
RATED SPEED	r.p.m	1500	1500	1500	1500	1500	1500	1500
VOLTAGE	V	12	12	12	230/400	230/400	230/400	230/400
POWER FACTOR	cos Phi	0,8	0,8	0,8	0,8	0,8	0,8	0,8
ENGINE								
BRAND		TUMOSAN	TUMOSAN	TUMOSAN	TUMOSAN	TUMOSAN	TUMOSAN	TUMOSAN
MODEL		30N296048C	30T296055C	30T 31T075C	40T39T085C	40T39T095C	40T41G105C	40T41G115C
ENGINE TYPE		4 Stroke - Diesel	4 Stroke - Diesel	4 Stroke - Diesel	4 Stroke - Diesel	4 Stroke - Diesel	4 Stroke - Diesel	4 Stroke - Diesel
INJECTION TYPE		Direct Injection	Direct Injection	Direct Injection	Direct Injection	Direct Injection	Direct Injection	Direct Injection
ASPIRATION TYPE		Naturally Aspirated	Naturally Aspirated	Naturally Aspirated	Naturally Aspirated	Naturally Aspirated	Turbo Charge	Turbo Charge
NUMBER OF CYLINDERS		3	3	3	4	4	4	4
CYLINDER BORE AND STROKE	mm	104x115	104x115	106,5x115	104x115	104x115	106,5x115	106,5x115
COOLING TYPE		Water Cooled	Water Cooled	Water Cooled	Water Cooled	Water Cooled	Water Cooled	Water Cooled
COMPRESSION RATE		17:01	17:01	17:01	17:01	17:01	17:01	17:01
TOTAL OIL CAPACITY	L	8	8	8	8	8	8	14
TOTAL COOLING CAPACITY	L	4,45	4,45	4,45	5,68	5,68	5,68	5,68
GOVERNOR TYPE	Type	Mechanical / Electronic	Mechanical / Electronic	Mechanical / Electronic	Mechanical / Electronic	Mechanical / Electronic	Mechanical / Electronic	Mechanical / Electronic
ALTERNATOR								
BRAND		Mezvello / Leroy Somer / Stamford	Mezvello / Leroy Somer / Stamford	Mezvello / Leroy Somer / Stamford	Mezvello / Leroy Somer / Stamford	Mezvello / Leroy Somer / Stamford	Mezvello / Leroy Somer / Stamford	Mezvello / Leroy Somer / Stamford
DIMENSIONS (OPEN SET)								
LXWXH	mm	1770x850x1440	1770x850x1440	1900x900x1610	1900x900x1610	1900x900x1610	2200x1000x1610	2200x1000x1610
WEIGHT	kg	940	986	1120	1200	1250	1368	1400
FUEL TANK	lt	135	135	220	220	220	300	300
DIMENSIONS (CANOPIED)								
LXWXH	mm	2225x950x1660	2225x950x1660	2440x1000x1860	2440x1000x1860	2440x1000x1860	2750x1100x1860	2750x1100x1860
WEIGHT	kg	1010	1040	1300	1370	1440	1520	1560
FUEL TANK	lt	135	135	220	220	220	300	300

ISUZU

DIESEL GENERATOR SETS

ISUZU

GJIS SERIES

25 kVA - 50 kVA



ISUZU

GJIS SERIES

25 kVA - 50 kVA

MODEL		GJIS25	GJIS30	GJIS35	GJIS50
STAND BY	kVA	25	30	35	50
	kW	20	24	28	40
PRIME	kVA	22	27	32	45
	kW	17,6	21,6	25,6	36
RATED SPEED	r.p.m	1500	1500	1500	1500
VOLTAGE	V	230/400	230/400	230/400	230/400
POWER FACTOR	cos Phi	0,8	0,8	0,8	0,8
ENGINE					
RATED OUTPUT POWER	kW	22	25	30	42
BRAND		ISUZU	ISUZU	ISUZU	ISUZU
MODEL		JE493DB-04	JE493DB-02	JE493ZDB-04	JE493ZLDB-02
ENGINE TYPE		4 Stroke - Diesel	4 Stroke - Diesel	4 Stroke - Diesel	4 Stroke - Diesel
INJECTION TYPE		Direct Injection	Direct Injection	Direct Injection	Direct Injection
ASPIRATION TYPE		Naturally Aspirated	Naturally Aspirated	Naturally Aspirated	Turbo Charge
NUMBER OF CYLINDERS		4	4	4	4
CYLINDER BORE AND STROKE	mm	93x102	93x102	93x102	93x102
CYLINDER VOLUME	L	2,8	2,8	2,8	2,8
COOLING TYPE		Water Cooled	Water Cooled	Water Cooled	Water Cooled
COMPRESSION RATE		18.2:1	18.2:1	18.2:1	18.2:1
STAND BY LOAD FUEL CONSUMPTION	l/h	4,5	4,8	6	9,98
100% PRIME LOAD FUEL CONSUMPTION	l/h	4,2	4,5	5,2	7,41
75% PRIME LOAD FUEL CONSUMPTION	l/h	3,2	3,7	4,5	6,42
50% PRIME LOAD FUEL CONSUMPTION	l/h	2,1	2,8	3,5	5,9
TOTAL OIL CAPACITY	L	4,5	4,5	4,5	4,5
TOTAL COOLING CAPACITY	L	4,5	4,5	4,5	4,5
GOVERNOR TYPE	Type	Mechanical	Mechanical	Mechanical	Mechanical
ALTERNATOR					
BRAND		Maranello/ Leroy Somer / Stamford	Maranello/ Leroy Somer / Stamford	Maranello/ Leroy Somer / Stamford	Maranello/ Leroy Somer / Stamford
DIMENSIONS (OPEN SET)					
LXWXH	mm	1550x820x1080	1770x850x1440	1770x850x1440	1900x900x1610
WEIGHT	kg	770	862	1000	1150
FUEL TANK	lt	70	135	135	220
DIMENSIONS (CANOPIED)					
LXWXH	mm	1900x920x1340	2225x950x1660	2225x950x1660	2440x1000x1860
WEIGHT	kg	850	932	1126	1220
FUEL TANK	lt	70	135	135	220



MITSUBISHI

DIESEL GENERATOR SETS



GJMT SERIES

1000 kVA - 2500 kVA



GJMT SERIES

1000 kVA - 2500 kVA

MODEL		GJMT1000	GJMT1100	GJMT1430	GJMT1550	GJMT1650
STAND BY	kVA	1000	1100	1430	1550	1650
	kW	800	880	1144	775	1320
PRIME	kVA	900	1000	1290	1400	1500
	kW	720	800	1032	1120	1200
RATED SPEED	r.p.m	1500	1500	1500	1500	1500
VOLTAGE	V	230/400	230/400	230/400	230/400	230/400
POWER FACTOR	cos Phi	0,8	0,8	0,8	0,8	0,8
ENGINE						
BRAND		MITSUBISHI	MITSUBISHI	MITSUBISHI	MITSUBISHI	MITSUBISHI
MODEL		S12A2-PTA2	S12H PTA	S12R PTA	S12R PTA2	S12R PTAA2
ENGINE TYPE		4 Stroke - Diesel	4 Stroke - Diesel	4 Stroke - Diesel	4 Stroke - Diesel	4 Stroke - Diesel
INJECTION TYPE		Direct Injection	Direct Injection	Direct Injection	Direct Injection	Direct Injection
ASPIRATION TYPE		Turbo Charge & Aftercooler	Turbo Charge & Aftercooler	Turbo Charge & Aftercooler	Turbo Charge & Aftercooler	Turbo Charge & Aftercooler
NUMBER OF CYLINDERS		12	12	12	12	12
CYLINDER BORE AND STROKE	mm	150x160	150x175	170x180	170x180	170x180
CYLINDER VOLUME	L	33,93	37,11	49,03	49,03	19,03
COOLING TYPE		Water Cooled	Water Cooled	Water Cooled	Water Cooled	Water Cooled
STAND BY LOAD FUEL CONSUMPTION	l/h	220	237,1	287,9	321	341,9
100% PRIME LOAD FUEL CONSUMPTION	l/h	195	216,7	261,3	288	308,9
75% PRIME LOAD FUEL CONSUMPTION	l/h	147	166,7	201,7	218	231,7
50% PRIME LOAD FUEL CONSUMPTION	l/h	110	117,52	146	155	161,5
TOTAL OIL CAPACITY	L	120	200	180	180	108
TOTAL COOLING CAPACITY	L	215	244	335	300	368
GOVERNOR TYPE	type	Electronic	Electronic	Electronic	Electronic	Electronic
ALTERNATOR						
BRAND		Maranello / Leroy Somer / Stamford	Maranello / Leroy Somer / Stamford	Maranello / Leroy Somer / Stamford	Maranello / Leroy Somer / Stamford	Maranello / Leroy Somer / Stamford
DIMENSIONS (OPEN SET)						
LXWXH	mm	5000x2250x2720	5000x2250x2720	5000x2250x2720	5450x2100x3080	5450x2100x3080
WEIGHT	kg	8196	8500	9500	10200	10365
FUEL TANK	lt	2060	2060	2060	2060	3000
DIMENSIONS (CANOPIED)						
LXWXH	mm	5800x2250x3480	5800x2250x3480	5800x2250x3420	5800x2250x3420	6500x2300x3130
WEIGHT	kg	8768	9635	10146	10765	16120
FUEL TANK	lt	2060	2060	2060	2060	3000



GJMT SERIES

1000 kVA - 2500 kVA

MODEL		GJMT1915	GJMT2100	GJMT2250	GJMT2500
STAND BY	kVA	1915	2100	2250	2500
	kW	1532	1680	1800	2000
PRIME	kVA	1720	1900	2000	2250
	kW	1376	1520	1600	1800
RATED SPEED	r.p.m	1500	1500	1500	1500
VOLTAGE	V	230/400	230/400	230/400	230/400
POWER FACTOR	cos Phi	0,8	0,8	0,8	0,8
ENGINE					
BRAND		MITSUBISHI	MITSUBISHI	MITSUBISHI	MITSUBISHI
MODEL		S16R PTA	S16R PTA2	S16R PTAA2	S16R2 PTAW-E
ENGINE TYPE		4 Stroke - Diesel	4 Stroke - Diesel	4 Stroke - Diesel	4 Stroke - Diesel
INJECTION TYPE		Direct Injection	Direct Injection	Direct Injection	Direct Injection
ASPIRATION TYPE		Turbo Charge & Aftercooler	Turbo Charge & Aftercooler	Turbo Charge & Aftercooler	Turbo Charge & Aftercooler
NUMBER OF CYLINDERS		16	16	16	16
CYLINDER BORE AND STROKE	mm	170x180	170x180	170x180	170x220
CYLINDER VOLUME	L	65,37	65,37	65,37	79,9
COOLING TYPE		Water Cooled	Water Cooled	Water Cooled	Water Cooled
STAND BY LOAD FUEL CONSUMPTION	l/h	374,6	423,7	454	552,9
100% PRIME LOAD FUEL CONSUMPTION	l/h	341,6	387,2	402,1	495,4
75% PRIME LOAD FUEL CONSUMPTION	l/h	259,6	297,9	307,5	362,5
50% PRIME LOAD FUEL CONSUMPTION	l/h	107,7	209,8	240	247,7
TOTAL OIL CAPACITY	L	230	230	400	290
TOTAL COOLING CAPACITY	L	368	445	11	761
GOVERNOR TYPE	type	Electronic	Electronic	Electronic	Electronic
ALTERNATOR					
BRAND		Maranello / Leroy Somer / Stamford	Maranello / Leroy Somer / Stamford	Maranello / Leroy Somer / Stamford	Maranello / Leroy Somer / Stamford
DIMENSIONS (OPEN SET)					
LXWXH	mm	5130x2250x2800	5130x2250x2800	5130x2250x2800	5130x2250x2800
WEIGHT	kg	10462	10462	10462	10462
FUEL TANK	lt	3500	3500	3500	3500
DIMENSIONS (CANOPIED)					
LXWXH	mm	9145x2470x3150	9145x2470x3150	9145x2470x3150	9145x2470x3150
WEIGHT	kg	16542	16542	16542	16542
FUEL TANK	lt	3500	3500	3500	3500



PORTABLE

DIESEL GENERATOR SETS

GÜÇBİR

GJD SERIES

7 kVA - 15 kVA

GJD SERIES

7 kVA - 15 kVA

MODEL		GJD7000H	GJD7000H-3	GJD7000S	GJD7000S-3	GJD8000H	GJD8000H-3	
GENERATOR SET	FREQUENCY	Hz	50	50	50	50	50	
	VOLTAGE	V	220	230/400	220	230/400	220	230/400
	MAXIMUM POWER	kVA	7	7	7	7	8	8
	POWER	kVA	6	6	6	6	7	7
	AMPERE	A	31	10	31	10	36	11
	PHASE		1	3	1	3	1	3
	VOLTAGE REGULATION		AVR	AVR	AVR	AVR	AVR	AVR
ENGINE	POWER FACTOR		1	0,8	1	0,8	1	0,8
	ENGINE MODEL		188FAE	188FAE	188FAE	188FAE	192FAE	192FAE
	PISTON & STROKE	mm	88x75	88x75	88x75	88x75	92x75	92x75
	MAX. POWER / SPEED	HP/rpm	12HP/3000	12HP/3000	12HP/3000	12HP/3000	13HP/3000	13HP/3000
	STARTING SYSTEM		Electric Start	Electric Start	Electric Start	Electric Start	Electric Start	Electric Start
	OIL CAPACITY	litre	1,7	1,7	1,7	1,7	1,7	1,7
	FUEL CAPACITY	litre	13,5	13,5	15	15	13,5	13,5
PACKAGE	FUEL CONSUMPTION	gck/Wh	280	280	280	280	242	242
	WEIGHT	kg	110	115	171	176	115	120
	DIMENSIONS	mm	720x492x655	720x492x655	930x530x740	930x530x740	720x492x655	720x492x655
	LOADING QTY FOR 20" CONTAINER	Pcs	76	76	72	72	76	76
	LOADING QTY FOR 40"HQ CONTAINER	Pcs	152	152	144	144	152	152



GJD SERIES

7 kVA - 15 kVA

MODEL		GJD8000S	GJD8000S-3	GJD10000H	GJD10000H-3	GJD10000S	GJD10000S-3	GJD14000S	GJD14000S-3	
GENERATOR SETS	FREQUENCY	Hz	50	50	50	50	50	50	50	
	VOLTAGE	v	220	230/400	220	230/400	220	230/400	220	230/400
	MAXIMUM POWER	kVA	8	8	10	10	10	10	15	15
	POWER	kVA	7	7	9	9	9	9	13,5	13,5
	AMPERE	A	36	11	45	14	45	14	68	21
	PHASE		1	3	1	3	1	3	1	3
	VOLTAGE REGULATION		AVR	AVR	AVR	AVR	AVR	AVR	AVR	AVR
ENGINE	POWER FACTOR		1	0,8	1	0,8	1	0,8	1	0,8
	ENGINE MODEL		192FAE	192FAE	198FAE	198FAE	198FAE	198FAE	292FAE	292FAE
	PISTON & STROKE	mm	92x75	92x75	98x82	98x82	98x82	98x82	2-92x75	2-92x75
	MAX. POWER / SPEED	HP/rpm	13HP/3000	13HP/3000	14HP/3000	14HP/3000	14HP/3000	14HP/3000	19,5/3000	19,5/3000
	STARTING SYSTEM		Electric Start	Electric Start	Electric Start	Electric Start	Electric Start	Electric Start	Electric Start	Electric Start
	OIL CAPACITY	litre	1,7	1,7	2	2	2	2	4	4
	FUEL CAPACITY	litre	15	15	13,5	13,5	30	30	45	45
PACKAGE	FUEL CONSUMPTION	gck/Wh	242	242	230	230	230	230	330	330
	WEIGHT	kg	175	180	130	135	210	210	320	320
	DIMENSIONS	mm	930x530x740	930x530x740	720x492x655	720x492x655	1100x760x860	1100x760x860	1300x700x955	1300x700x955
	LOADING QTY FOR 20" CONTAINER	Pcs	72	72	54	54	30	30	24	24
	LOADING QTY FOR 40"HQ CONTAINER	Pcs	144	144	108	108	96	96	54	54





PORTABLE

GASOLINE GENERATOR SETS

GÜÇBİR

GJB SERIES
1.2 kVA - 18 kVA

GJB SERIES

1.2 kVA - 18 kVA

MODEL		GJB1200	GJB3500	GJB3500E	GJB3400	GJB3400E	GJB6500E	GJB7000S	GJB7000S3	GJB7500E	GJB8000S	GJB8000S3	GJB9500E
STANDBY POWER	kVA	1,2	2,8	2,8	3	3	5,5	5,5	5,5	7	7	7	8
PRIME POWER	kVA	1	3	3	2,8	2,8	5	5	5	6,5	6,5	6,5	7,5
ENGINE MODEL		CP154F	WT210F	WT210F	CP170F	CP180F	CP192F	SC420	SC420	CP192F	SC460	SC460	SC460
ENGINE POWER	HP	3	7	7	7,5	7,5	13	14	14	14	16	16	16
ENGINE DISPLACEMENT	cc	98	208	208	223	223	389	420	420	439	459	459	459
ENGINE CYLINDER NUMBER		1	1	1	1	1	1	1	1	1	1	1	1
CURRENT	V	220-230	220	220	220-230	220-230	220-230	220-230	380-400	220-230	220-230	380-400	220-230
FREQUENCY	Hz	50	50	50	50	50	50	50	50	50	50	50	50
PHASE		1	1	1	1	1	1	1	3	1	1	3	1
STARTING TYPE		Rope	Rope	Electric	Electric	Electric	Electric	Electric	Electric	Electric	Electric	Electric	Electric
NOISE LEVEL (FOR CANOPY TYPE)	dB	-	49k	49k	-	-	-	68	68	-	68	68	-
RUN TIME WITH %100 LOAD	Hour	6	6,5	6,5	6	6	6	7	7	6	6	6	6
FUEL TANK CAPACITY	lt	6	15	15	15	15	25	30	30	25	30	30	25
NET WEIGHT	kg	41	48	46	43	47	93	100	105	95	110	115	98
DIMENSIONS (LXWXH)	mm	510*390*458	610*438*448	610*438*440	620*490*510	628*490*510	720*568*585	795*565*710	795*565*710	720*568*585	795*570*930	795*570*930	720*568*585
LOADING QTY FOR 20" CONTAINER	Pcs	335	245	245	140	168	124	56	56	124	36	36	124
LOADING QTY FOR 40"HQ CONTAINER	Pcs	480	590	590	430	430	270	180	180	270	120	120	270



GJB SERIES

1.2 kVA - 18 kVA

MODEL		GJB9500E3	GJB13000E	GJB13000E3	GJB13000S	GJB13000S3	GJB15000E	GJB15000E3	GJB18000E	GJB18000E3	GJB20000E	GJB20000E3
STANDBY POWER	kVA	8	11	11	11	11	13	13	16	16	18	18
PRIME POWER	kVA	7,5	10	10	10	10	12	12	15	15	17	17
ENGINE MODEL		SC460	SV690	SV690	SV690	SV690	SV750	SV750	SV1000	SV1000	SV1000	SV1000
ENGINE POWER	HP	16	18	18	18	18	22	22	33	33	33	33
ENGINE DISPLACEMENT	cc	459	678	678	678	678	750	750	999	999	999	999
ENGINE CYLINDER NUMBER		1	2	2	2	2	2	2	2	2	2	2
CURRENT	V	380-400	220-230	380-400	220-230	380-400	220-230	380-400	220-230	380-400	220-230	380-400
FREQUENCY	Hz	50	50	50	50	50	50	50	50	50	50	50
PHASE		3	1	3	1	3	1	3	1	3	1	3
STARTING TYPE		Electric	Electric	Electric	Electric	Electric	Electric	Electric	Electric	Electric	Electric	Electric
NOISE LEVEL (FOR CANOPY TYPE)	dB	-	-	-	71	71	-	-	-	-	-	-
RUN TIME WITH %100 LOAD	Hour	6	8	8	7,5	7,5	7,5	7,5	7,5	7,5	8	8
FUEL TANK CAPACITY	lt	25	45	45	45	45	45	45	60	60	60	60
NET WEIGHT	kg	100	170	175	180	190	190	195	230	248	230	240
DIMENSIONS (LXWXH)	mm	720*568*585	785*655*915	785*655*915	1310*710*940	1310*710*940	825*655*935	825*655*935	785*655*915	785*655*915	955*675*985	955*675*985
LOADING QTY FOR 20" CONTAINER	Pcs	124	50	50	24	24	50	50	40	40	40	40
LOADING QTY FOR 40"HQ CONTAINER	Pcs	270	182	182	54	54	100	180	84	84	84	84



Gucbir offers alternative solutions for your Marine Genset Inquiries in "Military and Armed Forces projects" by having a separate qualified team for special projects and also can deliver your demands in shortest delivery periods with one had solutions around the globe.



MARINE

DIESEL GENERATOR MODELS

10 kVA - 1500 kVA



GUCB4R

KUBOTA MARINE

DIESEL GENERATOR SETS

Kubota

GJK SERIES

10 kVA - 33 kVA



GJK SERIES

10 kVA - 33 kVA

Kubota

MODEL		GJK11	GJK13	GJK17	GJK22	GJK33
STAND BY	kVA	10	13	17	22	33
	kW	8	10,4	13,6	17,6	26,4
PRIME	kVA	9	12	15	20	30
	kW	7,2	9,6	12	16	24
RATED SPEED	r.p.m	1500	1500	1500	1500	1500
VOLTAGE	V	230	230	230	230	230
POWER FACTOR	cos Phi	1	1	1	1	1
ENGINE						
RATED OUTPUT POWER	kW	9,5	11	14	18	42
BRAND		KUBOTA	KUBOTA	KUBOTA	KUBOTA	KUBOTA
MODEL		D1106-E2BG	D1506-E2-BG	D1703-E2BG	V2203-E2BG	V3300-E2BG2
ENGINE TYPE		4 Stroke - Diesel	4 Stroke - Diesel	4 Stroke - Diesel	4 Stroke - Diesel	4 Stroke - Diesel
INJECTION TYPE		Direct Injection	Direct Injection	Direct Injection	Direct Injection	Direct Injection
ASPIRATION TYPE		Naturally	Naturally	Naturally	Naturally	Naturally
NUMBER OF CYLINDERS		3	3	3	3	3
CYLINDER BORE AND STROKE	mm	78x78,4	83 x 92,4	87 x 92,4	87 x 92,4	98 x 110
CYLINDER VOLUME	L	1,1	1,499	1,647	2,1	3,318
COOLING TYPE		Water Cooled	Water Cooled	Water Cooled	Water Cooled	Water Cooled
COMPRESSION RATE		N/A	N/A	N/A	23:01:00	22,6
FUEL CONSUMPTION	L/h	3	3,6	4,11	5,68	8,26
TOTAL YAĞ KAPASİTESİ	L	5,1	5,1	6	9,7	13,2
TOTAL COOLING KAPASİTESİ	L	3	3	4	5,3	10
GOVERNOR TYPE	Type	Mechanical	Mechanical	Mechanical	Mechanical	Mechanical
ALTERNATOR						
BRAND		Maranello/Leroy Somer	Maranello/Leroy Somer	Maranello/Leroy Somer	Maranello/Leroy Somer	Maranello/Leroy Somer
DIMENSIONS (CANOPIED)						
LXWXH	mm	840x540x620	970 x 540 x 620	940x560x620	1140x605x705	1515x635x850
WEIGHT	kg	273	306	350	412	600

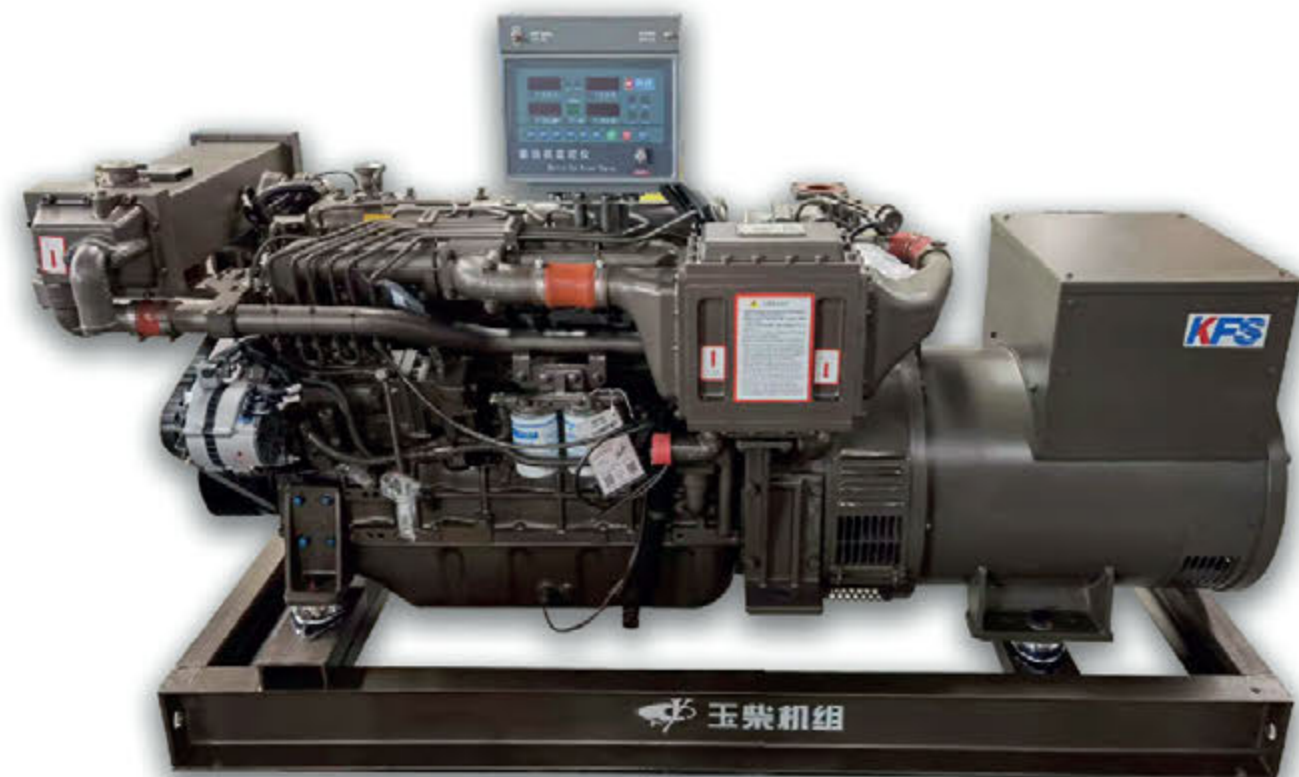
YUCHAI MARINE

DIESEL GENERATOR SETS



GJYM SERIES

33 kVA - 825 kVA



GJYM SERIES

33 kVA - 825 kVA



MODEL		GJYM33	GJYM40	GJYM55	GJYM66	GJYM66 S	GJYM88	GJYM103	GJYM123
STAND BY	kVA	33	40	55	66	66	88	103	123
	kW	26,4	32	44	52,8	52,8	70,4	82,4	98,4
PRIME	kVA	30	36	50	60	60	80	93	113
	kW	24	28,8	40	48	48	64	74,4	90,4
RATED SPEED	r.p.m	1500	1500	1500	1500	1500	1500	1500	1500
VOLTAGE	V	230/400	230/400	230/400	230/400	230/400	230/400	230/400	230/400
POWER FACTOR	cos Phi	0,8	0,8	0,8	0,8	0,8	0,8	0,8	0,8
CERTIFICATE		Full Certification	Full Certification	Full Certification	Full Certification	Full Certification	Full Certification	Full Certification	Full Certification
ENGINE									
BRAND		YUCHAI	YUCHAI	YUCHAI	YUCHAI	YUCHAI	YUCHAI	YUCHAI	YUCHAI
MODEL		YC4108C	YC41082C	YC41082C	YC4085Z-C22	YC6085Z-C12	YC61082C	YC61082LCA	YC6B165L-C22
TYPE		4 Stroke & Original Marine Type	4 Stroke & Original Marine Type	4 Stroke & Original Marine Type	4 Stroke & Original Marine Type	4 Stroke & Original Marine Type	4 Stroke & Original Marine Type	4 Stroke & Original Marine Type	4 Stroke & Original Marine Type
NUMBER OF CYLINDERS		4	4	4	4	6	6	6	6
CYLINDER VOLUME	lt.	4,21	4,2	4,2	4,2	6,8	6,8	6,8	6,8
CONTINUOUS POWER	kW	40 (55)	50	50	60	63	80	90	120
CYLINDER BORE AND STROKE	mm	108x115	108x115	108x115	108x115	108*125 mm	108*125 mm	108*125 mm	108*125 mm
COMPRESSION RATE		17,1	17,01	17,01	17,01	17,5:1	17,5:1	17,5:1	17,5:1
FUEL CONSUMPTION	(g/kW-h)	<200	<200	<200	<225	<215	<215	<215	<215
ALTERNATOR									
BRAND		KFS	KFS	KFS	KFS	KFS	KFS	KFS	KFS
MODEL		SB-HW4 D-24	SB-HW4 D-30	SB-HW4 D-40	SB-HW4 D-50	SB-HW4 D-50	SB-HW4 D-64	SB-HW4 D-75	SB-HW4 D-90
INSULATION CLASS		H/H	H/H	H/H	H/H	H/H	H/H	H/H	H/H
PROTECTION CLASS		IP23	IP23	IP23	IP23	IP23	IP23	IP23	IP23
CONNECTION TYPE		STAR	STAR	STAR	STAR	STAR	STAR	STAR	STAR
NUMBER OF POLES		4	4	4	4	4	4	4	4
EFFICIENCY	%	85,1	86,8	88,9	89,9	89,9	87,7	88,9	90,3

GJYM SERIES

33 kVA - 825 kVA



MODEL		GJYM137	GJYM165	GJYM206	GJYM220	GJYM247	GJYM275	GJYM343 C	GJYM343
STAND BY	kVA	137	165	206	220	247	275	343	343
	kW	109,6	132	164,8	176	197,6	220	274,4	274,4
PRIME	kVA	125	150	188	200	225	250	313	313
	kW	100	120	150,4	160	180	200	250,4	250,4
RATED SPEED	r.p.m	1500	1500	1500	1500	1500	1500	1500	1500
VOLTAGE	V	230/400	230/400	230/400	230/400	230/400	230/400	230/400	230/400
POWER FACTOR	cos Phi	0,8	0,8	0,8	0,8	0,8	0,8	0,8	0,8
CERTIFICATE		Full Certification	Full Certification	Full Certification	Full Certification	Full Certification	Full Certification	Full Certification	Full Certification
ENGINE									
BRAND		YUCHAI	YUCHAI	YUCHAI	YUCHAI	YUCHAI	YUCHAI	YUCHAI	YUCHAI
MODEL		YC6B165L-C22	YC6A200L-C20	YC6MK240L-C22	YC6MK260L-C22	YC6MK300L-C22	YC6MK330C	YC6T400C	YC6K420L-C20
TYPE		4 Stroke & Original Marine Type	4 Stroke & Original Marine Type	4 Stroke & Original Marine Type	4 Stroke & Original Marine Type	4 Stroke & Original Marine Type	4 Stroke & Original Marine Type	4 Stroke & Original Marine Type	4 Stroke & Original Marine Type
NUMBER OF CYLINDERS		6	6	6	6	6	6	6	6
CYLINDER VOLUME	lt.	6,8	7,2	10,33	10,33	10,33	10,33	16,35	12,2
CONTINUOUS POWER	kW	120	145	176	192	220	240	294	309
CYLINDER BORE AND STROKE	mm	108*125 mm	108*132	123*145	123*145	123*145	123*145	145*165	129*155
COMPRESSION RATE		17.5:1	17.5:1	16.8:1	16.8:1	16.8:1	16.8:1	15.5:1	16.5:1
FUEL CONSUMPTION	(g/kW-h)	<215	<215	<215	<215	<215	<215	<230	<195
ALTERNATOR									
BRAND		KFS	KFS	KFS	KFS	KFS	KFS	KFS	KFS
MODEL		SB-HW4.D-100	SB-HW4.D-120	SB-HW4.D-150	SB-HW4.D-180	SB-HW4.D-180	SB-HW4.D-200	SB-HW4.D-250	SB-HW4.D-250
INSULATION CLASS		H/H	H/H	H/H	H/H	H/H	H/H	H/H	H/H
PROTECTION CLASS		IP23	IP23	IP23	IP23	IP23	IP23	IP23	IP23
CONNECTION TYPE		STAR	STAR	STAR	STAR	STAR	STAR	STAR	STAR
NUMBER OF POLES		4	4	4	4	4	4	4	4
EFFICIENCY	%	90,9	91,5	92,1	92,8	92,8	93	93,5	93,5

GJYM SERIES

33 kVA - 825 kVA



MODEL		GJYM385	GJYM385	GJYM412	GJYM550	GJYM625	GJYM687	GJYM825
STAND BY	kVA	385	385	412	550	625	687	825
	kW	308	308	329,6	440	500	549,6	660
PRIME	kVA	350	350	375	500	560	625	750
	kW	280	280	300	400	448	500	600
RATED SPEED	r.p.m	1500	1500	1500	1500	1500	1500	1500
VOLTAGE	V	230/400	230/400	230/400	230/400	230/400	230/400	230/400
POWER FACTOR	cos Phi	0,8	0,8	0,8	0,8	0,8	0,8	0,8
CERTIFICATE		Full Certification	Full Certification	Full Certification	Full Certification	Full Certification	Full Certification	Full Certification
ENGINE								
BRAND		YUCHAI	YUCHAI	YUCHAI	YUCHAI	YUCHAI	YUCHAI	YUCHAI
MODEL		YC6T450C	YC6K450L-C20	YC6T490C	YC6T0655L-C20	YC6C760L-C20	YC6C820L-C21	YC6C980L-C20
TYPE		4 Stroke & Original Marine Type	4 Stroke & Original Marine Type	4 Stroke & Original Marine Type	4 Stroke & Original Marine Type	4 Stroke & Original Marine Type	4 Stroke & Original Marine Type	4 Stroke & Original Marine Type
NUMBER OF CYLINDERS		6	6	6	6	6	6	6
CYLINDER VOLUME	lt.	16,35	16,35	16,35	19,6	39,58	39,58	39,58
CONTINUOUS POWER	kW	294	331	360	480	536	600	660
CYLINDER BORE AND STROKE	mm	145x165	145x165	145x165	152x180	200x210	200x210	200x210
COMPRESSION RATE		15.5:1	15.5:1	15.5:1	14:01	14.5:1	14.5:1	14.5:1
FUEL CONSUMPTION	(g/kW-h)	<230	<230	<225	<195	<195	<195	<195
ALTERNATOR								
BRAND		KFS	KFS	KFS	KFS	KFS	KFS	KFS
MODEL		SB-HW4.D-280	SB-HW4.D-280	SB-HW4.D-300	SB-HW4.D-400	SB-HW4.D-456	SB-HW4.D-500	SB-HW4.D-600
INSULATION CLASS		H/H	H/H	H/H	H/H	H/H	H/H	H/H
PROTECTION CLASS		IP23	IP23	IP23	IP23	IP23	IP23	IP23
CONNECTION TYPE		STAR	STAR	STAR	STAR	STAR	STAR	STAR
NUMBER OF POLES		4	4	4	4	4	4	4
EFFICIENCY	%	92,4	92,4	93,6	93,9	94,1	94,3	93,9

TRAILER

DIESEL GENERATOR MODELS

Our trailers are produced as single-axle, double-axle and four-axle types for heavy and light tonnage capacities and absolutely appropriate to vehicle regulations.

Perkins



FPT IVECO

MOTORS Baudouin

XENIC

VOLVO PENTA



15 kVA 2500 kVA

LIGHTING

TOWERS

The lighting tower provides convenience to its users with its mobile ability to respond quickly to temporary lighting needs. It is a very practical and effective lighting source for sports activities, construction sites, concerts, other activities and night-time dinlatma kaynağıdır.

It is ideal and reliable in continuous operation such as concrete casting operations, road and bridge constructions, and night



10 kVA 55 kVA

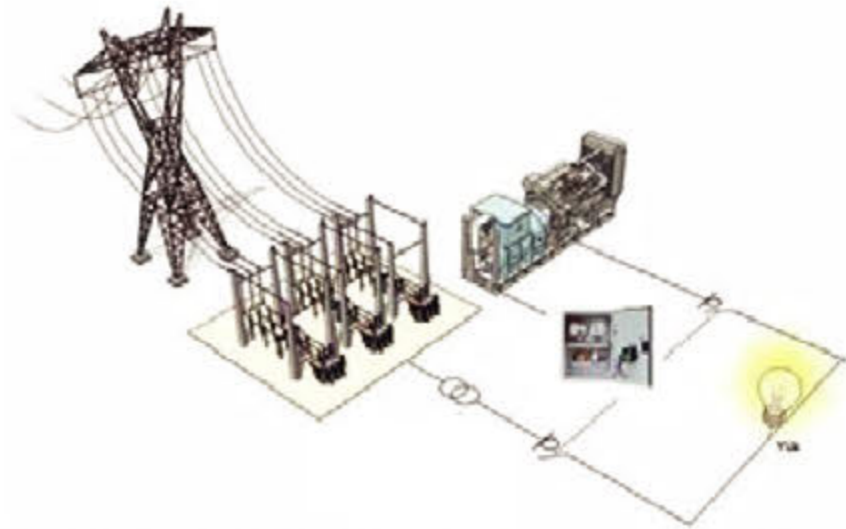
GÜÇB R

ATS PANEL

Gucbir designs and manufacturers transfer boards according to standart requirements or according to project based spesific requirements.

Contactors,open or closed type switches or compact ATS switches can be used on Transfer Boards.

In addition to ABB, GE, Schneider, Siemens, Andeli, Hyundai, Guibir, Telargon, Socomec brands we use in our standarts products, if customer demand is a different brand, transfer board are made with different brand cutters.



SYNCHRON SYSTEMS

For higher energy requirements the synchronisation of two or more lower capacity generators instead a high power generator provides following advantages;

- Lower cost
- Flexible usage
- Low fuel consumption and cost effectiveness
- Safety usage
- Easy to maintain and service

Field of Aplication

- Multiple genset synchronisation for higher standby power
- Multiple generator synchronisation for higher prime power
- Generator -network synchronisation for soft transfer
- Synchronised operation with the electricity network
- Synchronisation of genset starting from two genset to 8 genset to more than one network



SPECIAL PROJECTS

Because of special demands for the installation and application of generator sets onsite, customers need customized generator sets or generator systems, special size, tanks capacity, output power, input and output connections and so on. In all the cases GUCBIR amends regular generator sets or designs new sets and power supply systems.

Throughfull customization of power equipment under special user requests is one of the strong point of GUCBIR GENERATOR.



WHY US?

High Quality

Gucbir Generator produces the best quality products in the industry.

Affordable Price

Gucbir Generator works with manufacturers directly, not with intermediaries in the supply of semi-finished products. Gucbir Generator makes machine-weighted production in the factory. It mostly transports with its own vehicles and serves with its own vehicles. In this way, it reduces costs and offers the most affordable prices to customers.

Fast Communication

Gucbir Generator employees can be reached 7x24. You always get quick turns.

Customer Satisfaction Oriented-Work

Gucbir Generator targets happy customers all the time by producing quality products, providing fast service. Gucbir Generator always serves as a perfect orchestra, with the idea that the customer will see the good of goods or services it receives. Gucbir Generator listens to its customers, understands and gets their customers' idea and provides a long-term relationship. Gucbir Generator takes into account customer feedback.

Project-Specific Solutions

Gucbir Generator produces special products for the need with its powerful machine tracks and more than 30 engineering staff. It can produce special solutions even in non-resolutions.

Complete Certification

Gucbir Generator has TSE Quality, CE, ISO 9001, ISO 14001, ISO 25051, ISO 10002, OHSAS, Local Manufacture Certificate, Manufacturing Proficiency Certificate, Capacity Report, Perkins OEM Manufacturer's Certificate, Baudouin OEM Manufacturer's Certificate, Ricardo OEM Manufacturer's Certificate, Maranello OEM Manufacturer's Certificate, Trademark Registration Certificate, Industrial Registration Certificate, After-Sales Service Qualification Certificate, TSE Service Place Qualification Certificate, 1000 Hours Salt Water Test Certificates and UKRSepro, EAC, Gost-R Certificates.

Excellent Design, Performance, Durability

Gucbir Generator makes a difference with different designs from other manufacturers in the industry. This difference ensures increased performance and low volume in products.

Fast Delivery

Gucbir Generator always with around 1000 engine and alternator stocks. So, it delivers the products quickly.

Fast Service

Gucbir Generator provides service all over the world thanks to its powerful service team.

Continuous Innovation

Gucbir Generator constantly improves itself. Gucbir Generator looks at the big picture, open to all kinds of innovation that will benefit the user.

Education

Gucbir Generator keeps employees up to date with continuous training and reflects on its customers.

GUCBIR

GÜÇBİR

GENERATOR



FACTORY

Soğanlıyörük Köyü. Delihakkı Mah. No:23
KDZ. EREGLI / ZONGULDAK / TÜRKİYE
Tel: +90 372 355 73 74 Fax: +90 372 355 73 74
alex@gucbirjenerator.com | www.gucbirjenerator.com

HEAD OFFICE

Şerifali Mah. Tavukçuyolu Cad. No:200 / 1
Ümraniye / İSTANBUL / TÜRKİYE
Tel: +90 216 312 7979 Fax: +90 216 312 7972
alex@gucbirjenerator.com | www.gucbirjenerator.com

DISTRIBUTOR

JOIN OUR TELEGRAM CHANNEL:
<https://t.me/generatorvsem>